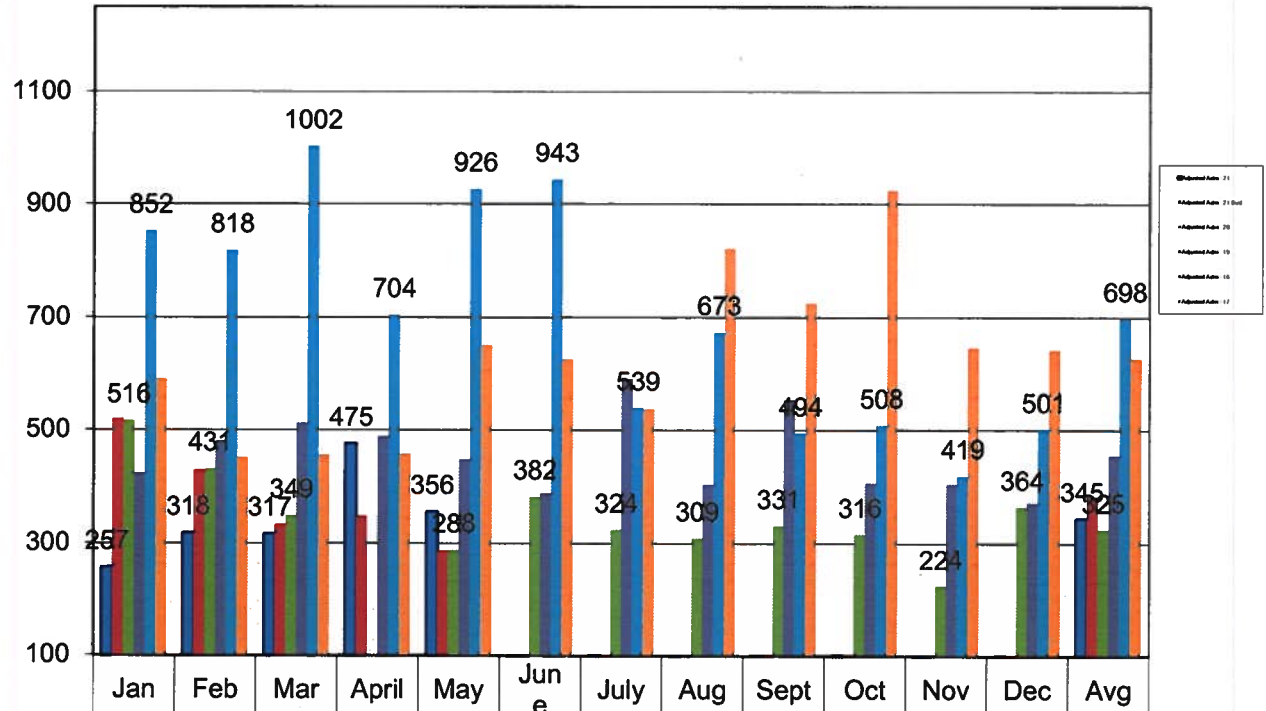


Cogdell Memorial Hospital - Adjusted Admissions

Adjusted Admissions - Excl Asst. Living

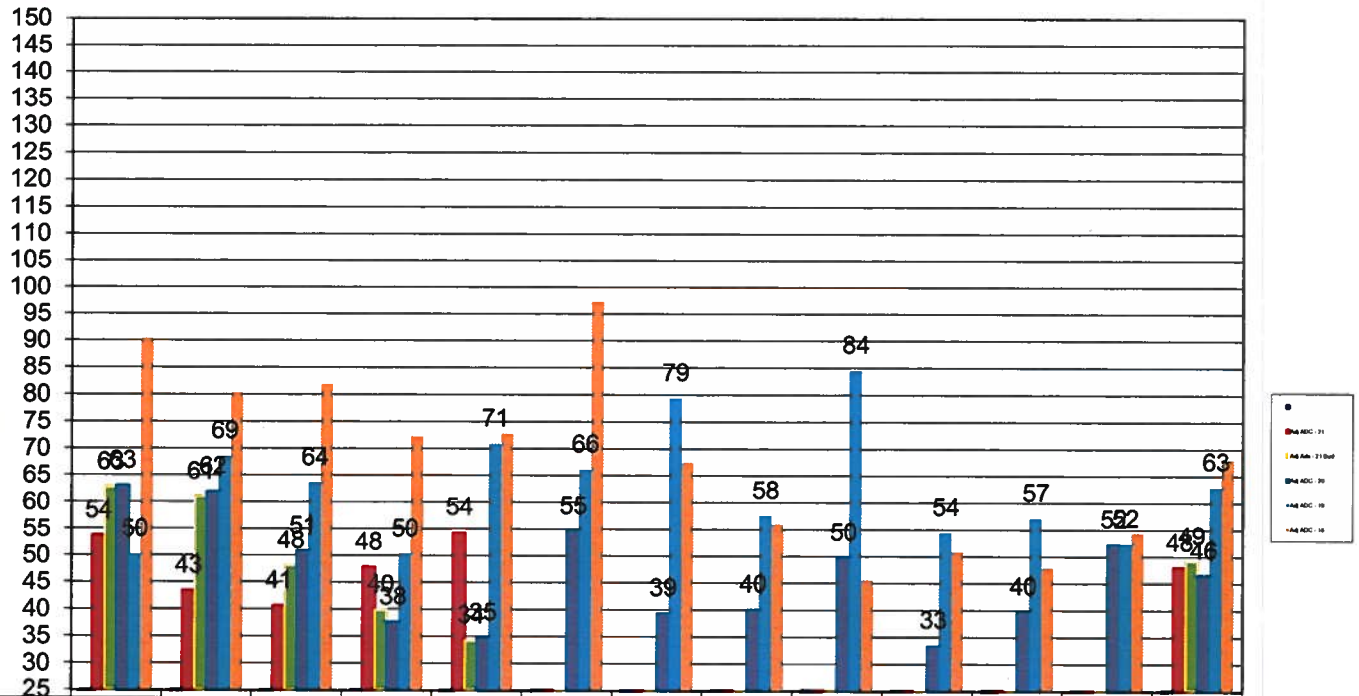


| | | | | | | | | | | | | | |
|-----------------------|-----|-----|------|-----|-----|-----|-----|-----|-----|-----|-----|-----|-----|
| Adjusted Adm - 21 | 257 | 318 | 317 | 475 | 356 | 0 | 0 | 0 | 0 | 0 | 0 | 0 | 345 |
| Adjusted Adm - 21 Bud | 520 | 429 | 334 | 348 | 287 | 0 | 0 | 0 | 0 | 0 | 0 | 0 | 384 |
| Adjusted Adm - 20 | 516 | 431 | 349 | 60 | 288 | 382 | 324 | 309 | 331 | 316 | 224 | 364 | 325 |
| Adjusted Adm - 19 | 424 | 480 | 512 | 488 | 448 | 389 | 590 | 404 | 553 | 407 | 405 | 371 | 456 |
| Adjusted Adm - 18 | 852 | 818 | 1002 | 704 | 926 | 943 | 539 | 673 | 494 | 508 | 419 | 501 | 698 |
| Adjusted Adm - 17 | 590 | 451 | 455 | 458 | 651 | 626 | 537 | 821 | 725 | 924 | 646 | 642 | 627 |

Month

Cogdell Memorial Hospital - Adj. Average Daily Census

Average Daily Census - Excl. Asst. Living

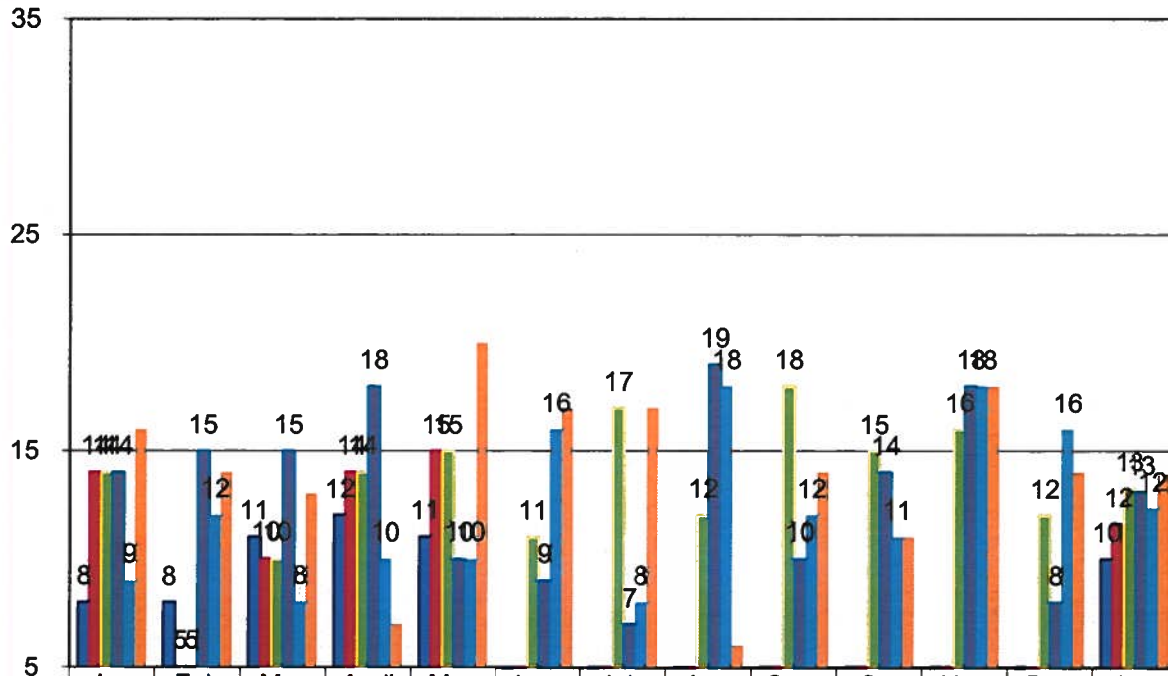


| | | | | | | | | | | | | | |
|--------------------|----|----|----|----|----|----|----|----|----|----|----|----|----|
| ■ | 0 | 0 | 0 | 0 | 0 | 0 | 0 | 0 | 0 | 0 | 0 | 0 | 0 |
| ■ Adj ADC - 21 | 54 | 43 | 41 | 48 | 54 | 0 | 0 | 0 | 0 | 0 | 0 | 0 | 48 |
| ■ Adj Adc - 21 Bud | 63 | 61 | 48 | 40 | 34 | 0 | 0 | 0 | 0 | 0 | 0 | 0 | 49 |
| ■ Adj ADC - 20 | 63 | 62 | 51 | 38 | 35 | 55 | 39 | 40 | 50 | 33 | 40 | 52 | 46 |
| ■ Adj ADC - 19 | 50 | 69 | 64 | 50 | 71 | 66 | 79 | 58 | 84 | 54 | 57 | 52 | 63 |
| ■ Adj ADC - 18 | 90 | 80 | 82 | 72 | 73 | 97 | 67 | 56 | 46 | 51 | 48 | 54 | 68 |

Month

Cogdell Memorial Hospital- Deliveries

of Deliveries

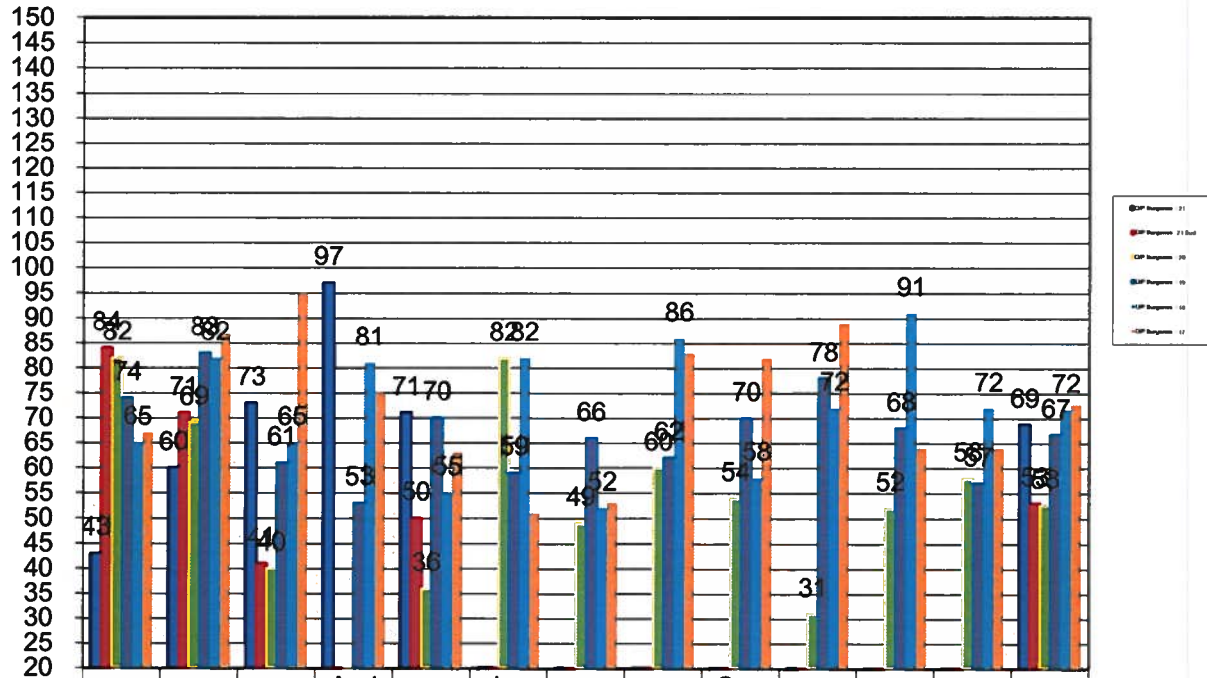


| | | | | | | | | | | | | | |
|-----------------------|----|----|----|----|----|----|----|----|----|----|----|----|----|
| ■ Deliveries - 21 | 8 | 8 | 11 | 12 | 11 | 0 | 0 | 0 | 0 | 0 | 0 | 0 | 10 |
| ■ Deliveries - 21 Bud | 14 | 5 | 10 | 14 | 15 | 0 | 0 | 0 | 0 | 0 | 0 | 0 | 12 |
| ■ Deliveries - 20 | 14 | 5 | 10 | 14 | 15 | 11 | 17 | 12 | 18 | 15 | 16 | 12 | 13 |
| ■ Deliveries - 19 | 14 | 15 | 15 | 18 | 10 | 9 | 7 | 19 | 10 | 14 | 18 | 8 | 13 |
| ■ Deliveries - 18 | 9 | 12 | 8 | 10 | 10 | 16 | 8 | 18 | 12 | 11 | 18 | 16 | 12 |
| ■ Deliveries - 17 | 16 | 14 | 13 | 7 | 20 | 17 | 17 | 6 | 14 | 11 | 18 | 14 | 14 |

Month

Cogdell Memorial Hospital - Outpatient Surgeries

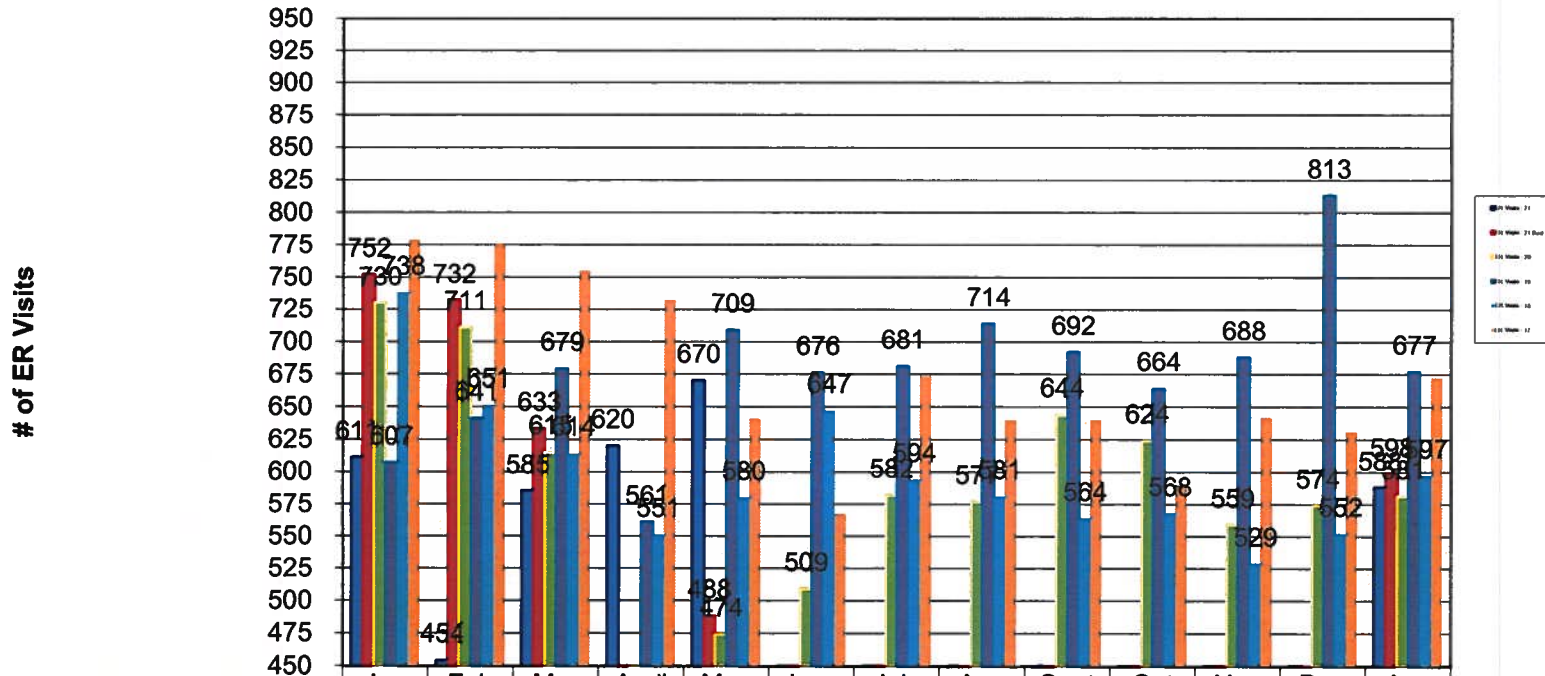
of Outpatient Surgeries



| | Jan | Feb | Mar | April | May | June | July | Aug | Sep | Oct | Nov | Dec | Avg |
|--------------------------|-----|-----|-----|-------|-----|------|------|-----|-----|-----|-----|-----|-----|
| ■ O/P Surgeries - 21 | 43 | 60 | 73 | 97 | 71 | 0 | 0 | 0 | 0 | 0 | 0 | 0 | 69 |
| ■ O/P Surgeries - 21 Bud | 84 | 71 | 41 | 19 | 50 | 0 | 0 | 0 | 0 | 0 | 0 | 0 | 53 |
| ■ O/P Surgeries - 20 | 82 | 69 | 40 | 18 | 36 | 82 | 49 | 60 | 54 | 31 | 52 | 58 | 53 |
| ■ O/P Surgeries - 19 | 74 | 83 | 61 | 53 | 70 | 59 | 66 | 62 | 70 | 78 | 68 | 57 | 67 |
| ■ O/P Surgeries - 18 | 65 | 82 | 65 | 81 | 55 | 82 | 52 | 86 | 58 | 72 | 91 | 72 | 72 |
| ■ O/P Surgeries - 17 | 67 | 87 | 95 | 75 | 63 | 51 | 53 | 83 | 82 | 89 | 64 | 64 | 73 |

Month

Cogdell Memorial Hospital - ER Visits

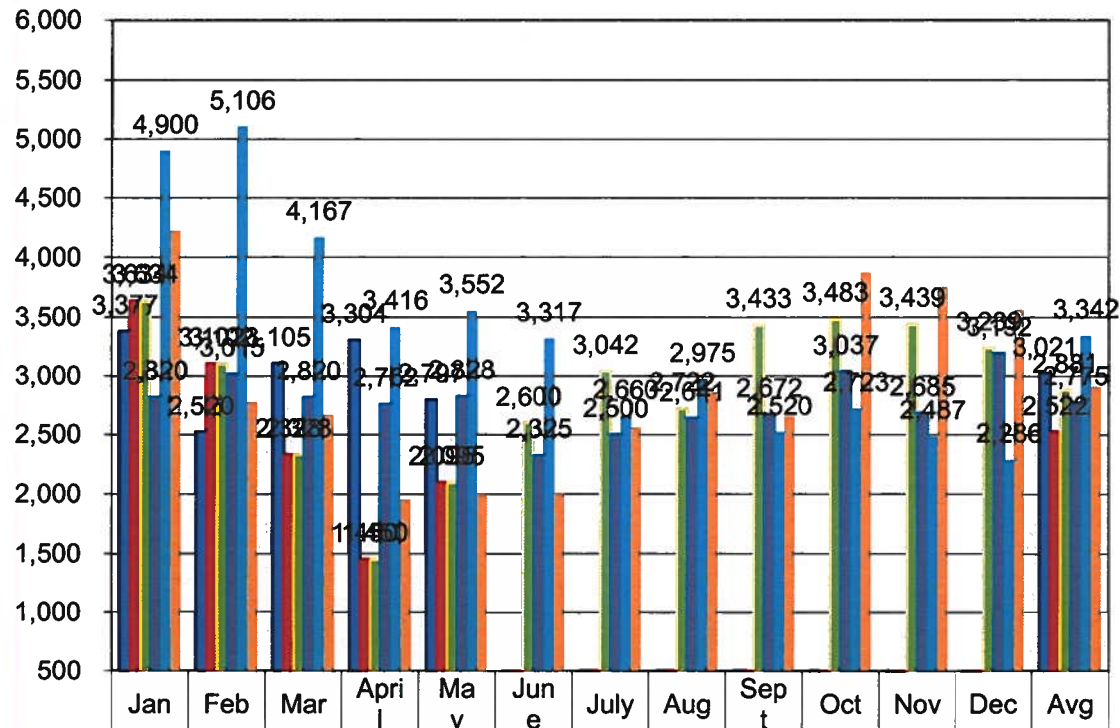


| | Jan | Feb | Mar | April | May | June | July | Aug | Sept | Oct | Nov | Dec | Avg |
|--------------------|-----|-----|-----|-------|-----|------|------|-----|------|-----|-----|-----|-----|
| ER Visits - 21 | 611 | 454 | 585 | 620 | 670 | 0 | 0 | 0 | 0 | 0 | 0 | 0 | 588 |
| ER Visits - 21 Bud | 752 | 732 | 633 | 387 | 488 | 0 | 0 | 0 | 0 | 0 | 0 | 0 | 598 |
| ER Visits - 20 | 730 | 711 | 615 | 376 | 474 | 509 | 582 | 577 | 644 | 624 | 559 | 574 | 581 |
| ER Visits - 19 | 607 | 641 | 679 | 561 | 709 | 676 | 681 | 714 | 692 | 664 | 688 | 813 | 677 |
| ER Visits - 18 | 738 | 651 | 614 | 551 | 580 | 647 | 594 | 581 | 564 | 568 | 529 | 552 | 597 |
| ER Visits - 17 | 779 | 776 | 755 | 732 | 641 | 567 | 674 | 640 | 640 | 590 | 642 | 631 | 672 |

Month

Cogdell Memorial Hospital - Other Outpatient Visits

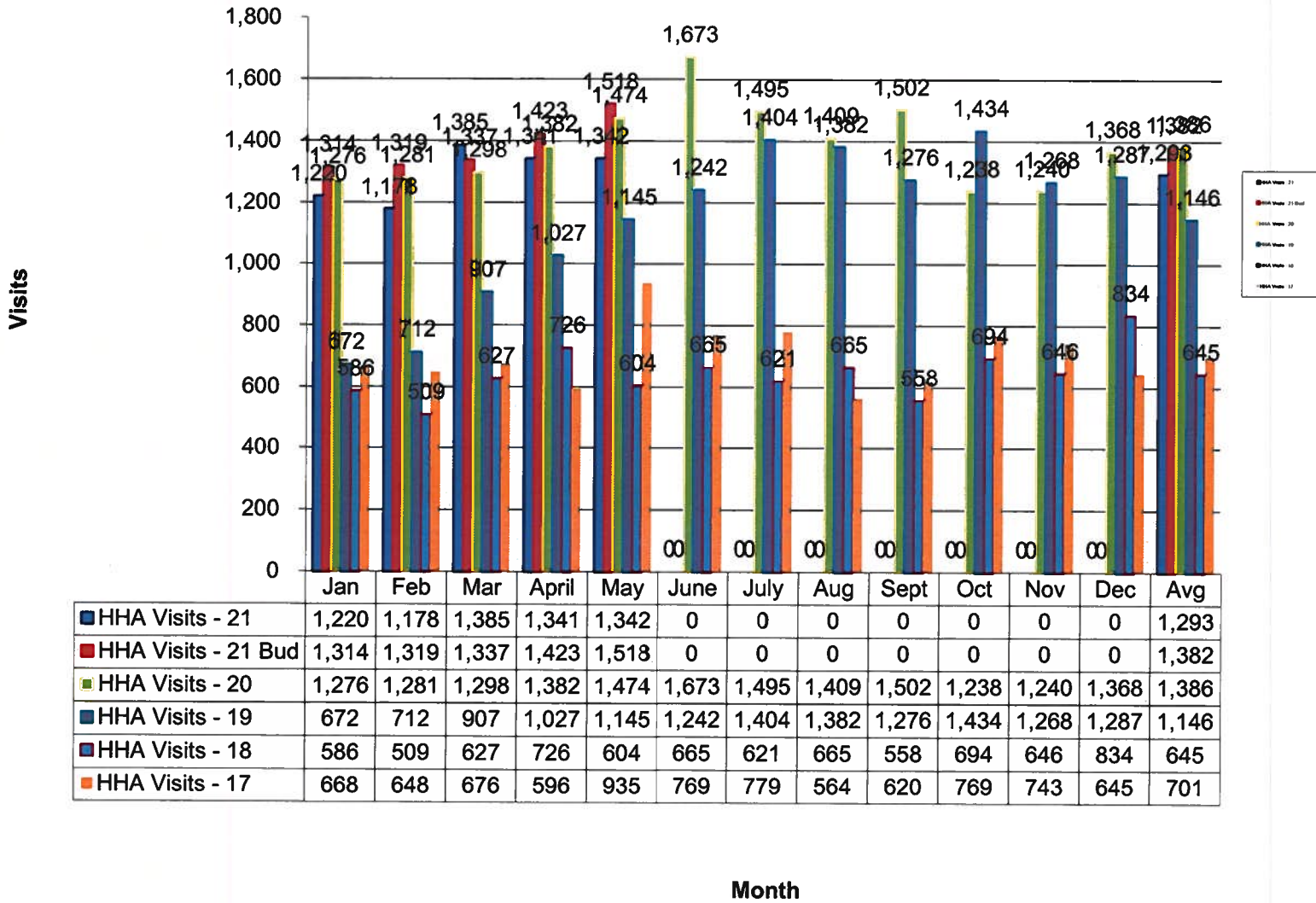
of Other Outpatient Visits



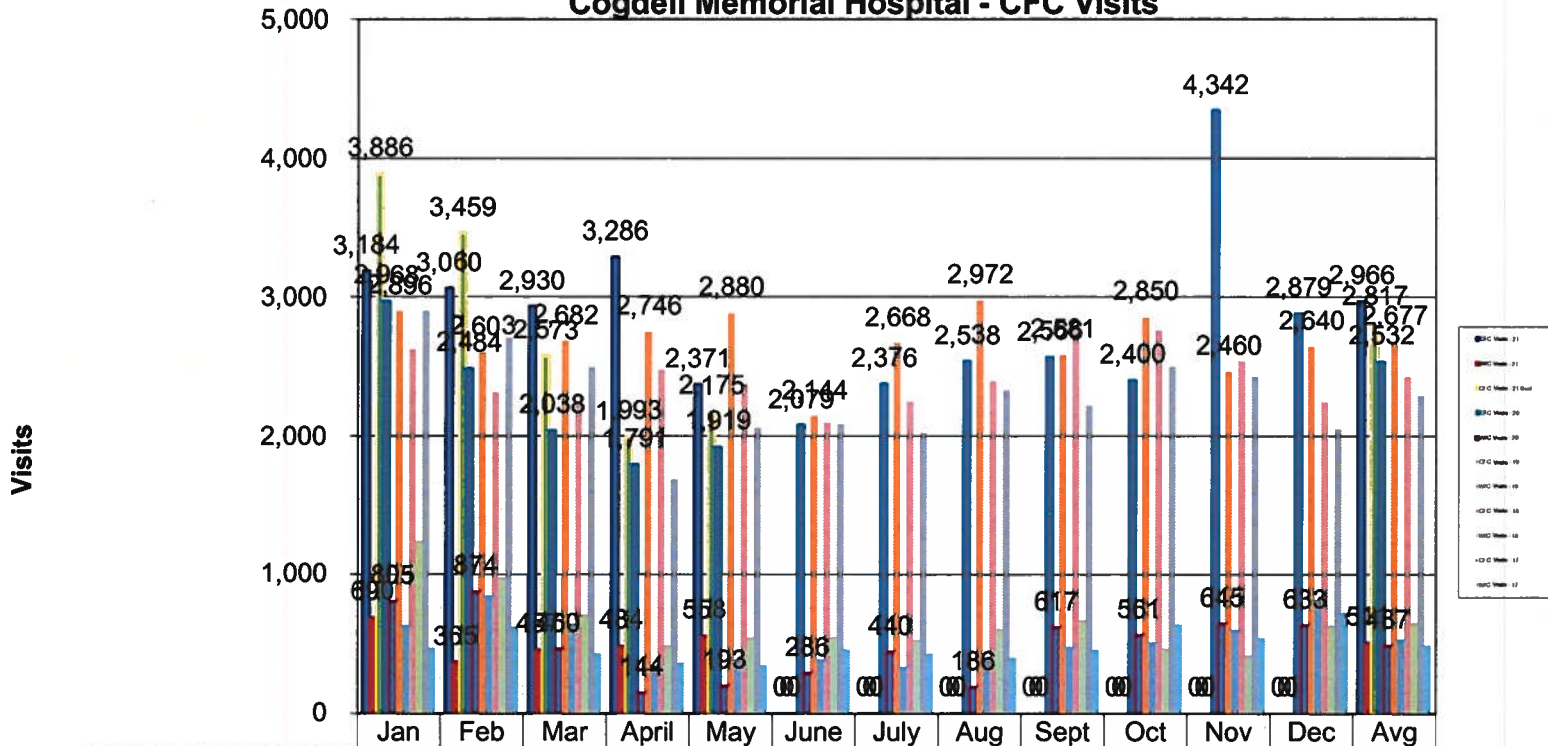
| | | | | | | | | | | | | | |
|---------------------------|-------|-------|-------|-------|-------|-------|-------|-------|-------|-------|-------|-------|-------|
| Other O/P Visits - 21 | 3,377 | 2,520 | 3,105 | 3,304 | 2,797 | 0 | 0 | 0 | 0 | 0 | 0 | 0 | 3,021 |
| Other O/P Visits - 21 Bud | 3,634 | 3,102 | 2,328 | 1,450 | 2,095 | 0 | 0 | 0 | 0 | 0 | 0 | 0 | 2,522 |
| Other O/P Visits - 20 | 3,634 | 3,102 | 2,328 | 1,450 | 2,095 | 2,600 | 3,042 | 2,722 | 3,433 | 3,483 | 3,439 | 3,239 | 2,881 |
| Other O/P Visits - 19 | 2,820 | 3,015 | 2,820 | 2,762 | 2,828 | 2,325 | 2,500 | 2,641 | 2,672 | 3,037 | 2,685 | 3,192 | 2,775 |
| Other O/P Visits - 18 | 4,900 | 5,106 | 4,167 | 3,416 | 3,552 | 3,317 | 2,660 | 2,975 | 2,520 | 2,723 | 2,487 | 2,286 | 3,342 |
| Other O/P Visits - 17 | 4,225 | 2,777 | 2,667 | 1,954 | 2,000 | 2,000 | 2,556 | 2,864 | 2,656 | 3,875 | 3,752 | 3,561 | 2,907 |

Month

Cogdell Memorial Hospital - HHA Visits

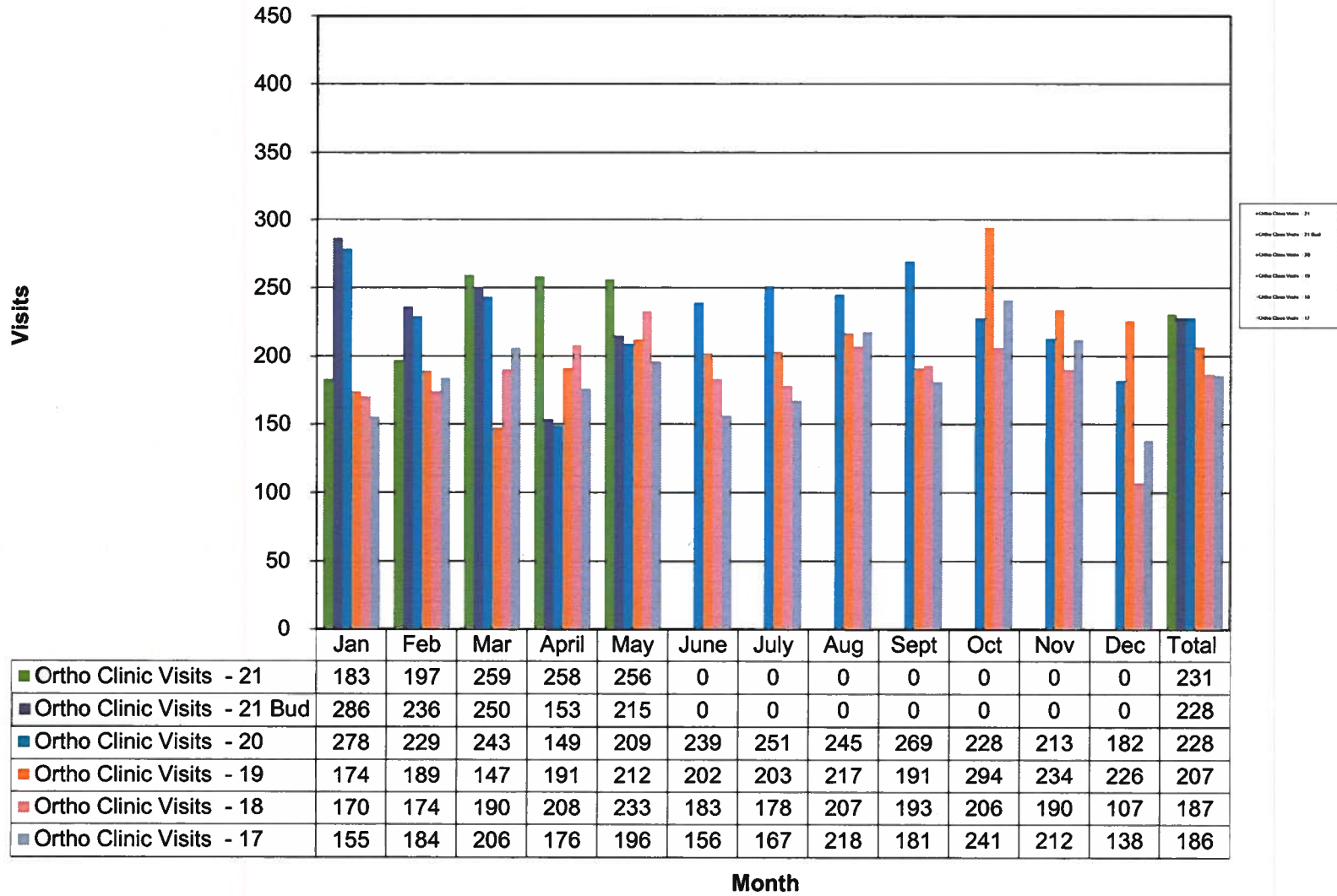


Cogdell Memorial Hospital - CFC Visits

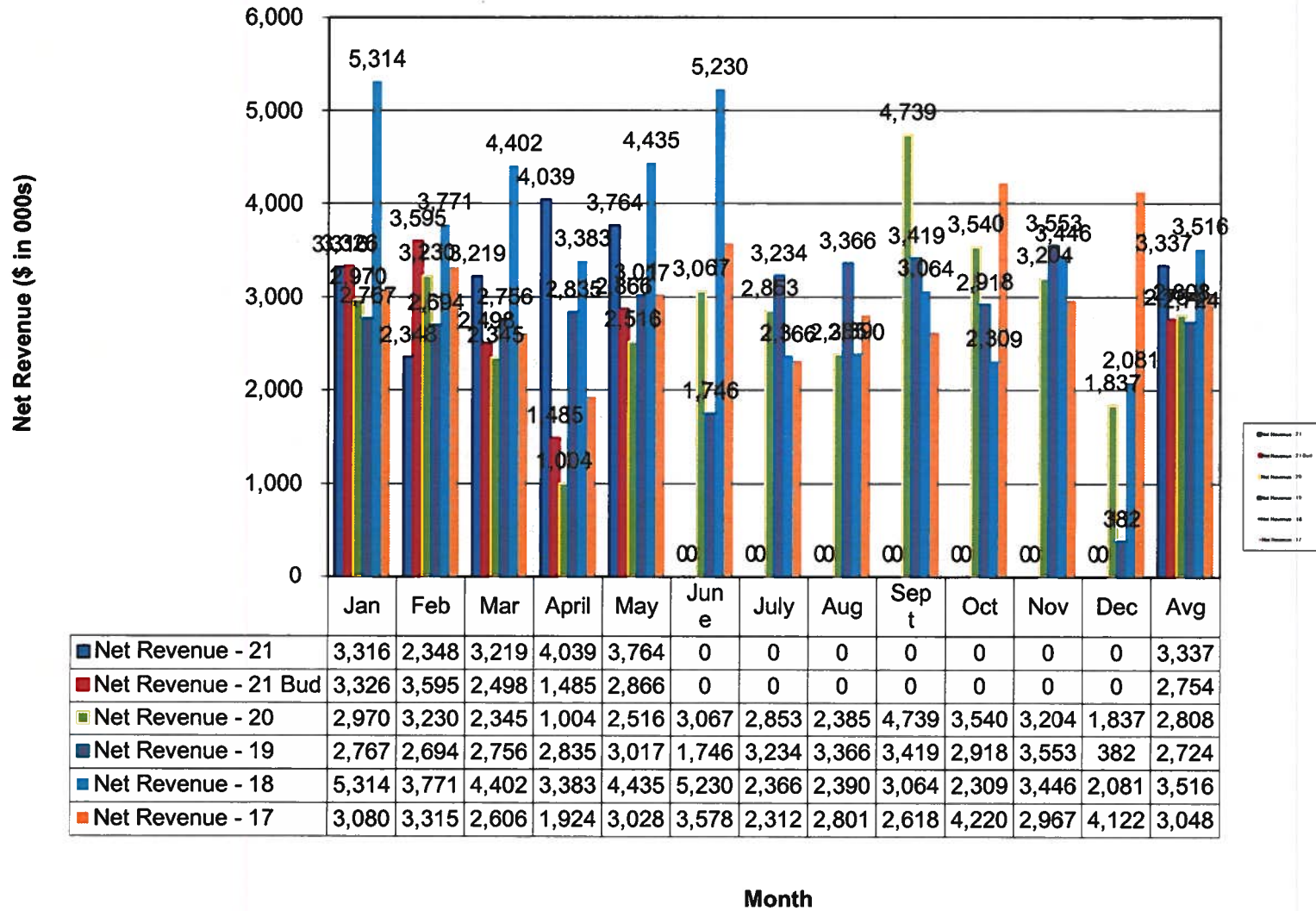


| | Jan | Feb | Mar | April | May | June | July | Aug | Sept | Oct | Nov | Dec | Avg |
|-----------------------|-------|-------|-------|-------|-------|-------|-------|-------|-------|-------|-------|-------|-------|
| ■ CFC Visits - 21 | 3,184 | 3,060 | 2,930 | 3,286 | 2,371 | 0 | 0 | 0 | 0 | 0 | 0 | 0 | 2,966 |
| ■ W/C Visits - 21 | 690 | 365 | 457 | 484 | 558 | 0 | 0 | 0 | 0 | 0 | 0 | 0 | 511 |
| ■ CFC Visits - 21 Bud | 3,886 | 3,459 | 2,573 | 1,993 | 2,175 | 0 | 0 | 0 | 0 | 0 | 0 | 0 | 2,817 |
| ■ CFC Visits - 20 | 2,968 | 2,484 | 2,038 | 1,791 | 1,919 | 2,079 | 2,376 | 2,538 | 2,566 | 2,400 | 4,342 | 2,879 | 2,532 |
| ■ W/C Visits - 20 | 805 | 874 | 460 | 144 | 193 | 286 | 440 | 186 | 617 | 561 | 645 | 633 | 487 |
| ■ CFC Visits - 19 | 2,896 | 2,603 | 2,682 | 2,746 | 2,880 | 2,144 | 2,668 | 2,972 | 2,581 | 2,850 | 2,460 | 2,640 | 2,677 |
| ■ W/C Visits - 19 | 635 | 850 | 648 | 344 | 390 | 392 | 336 | 405 | 483 | 517 | 606 | 825 | 536 |
| ■ CFC Visits - 18 | 2,623 | 2,314 | 2,245 | 2,477 | 2,374 | 2,096 | 2,247 | 2,393 | 2,802 | 2,757 | 2,539 | 2,245 | 2,426 |
| ■ W/C Visits - 18 | 1,245 | 981 | 714 | 493 | 548 | 553 | 535 | 612 | 675 | 470 | 422 | 636 | 657 |
| ■ CFC Visits - 17 | 2,900 | 2,704 | 2,494 | 1,688 | 2,058 | 2,084 | 2,023 | 2,331 | 2,217 | 2,498 | 2,426 | 2,048 | 2,289 |
| ■ W/C Visits - 17 | 473 | 624 | 432 | 365 | 348 | 463 | 433 | 402 | 460 | 646 | 549 | 729 | 494 |

Cogdell Memorial Hospital - Ortho Visits

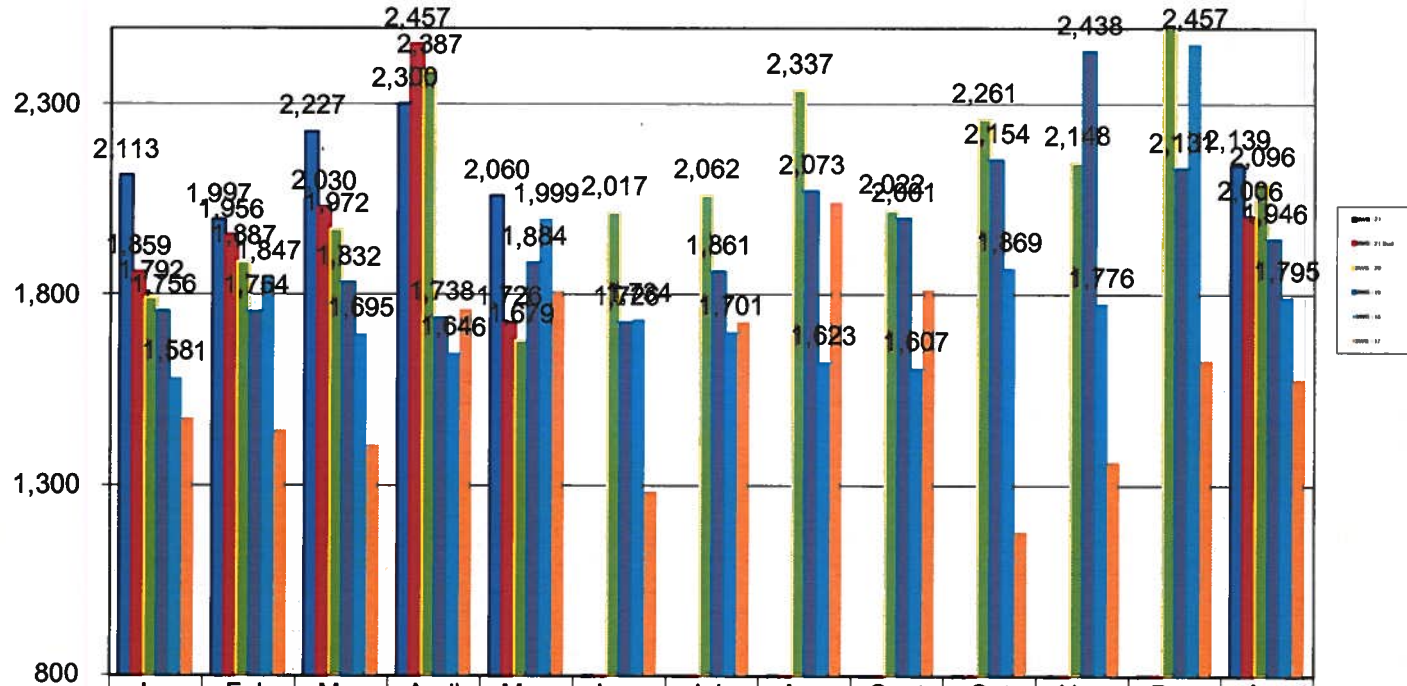


Cogdell Memorial Hospital - Net Revenue (\$ in 000s)



Cogdell Memorial Hospital - Salaries, Wages & Benefits (\$ in 000s)

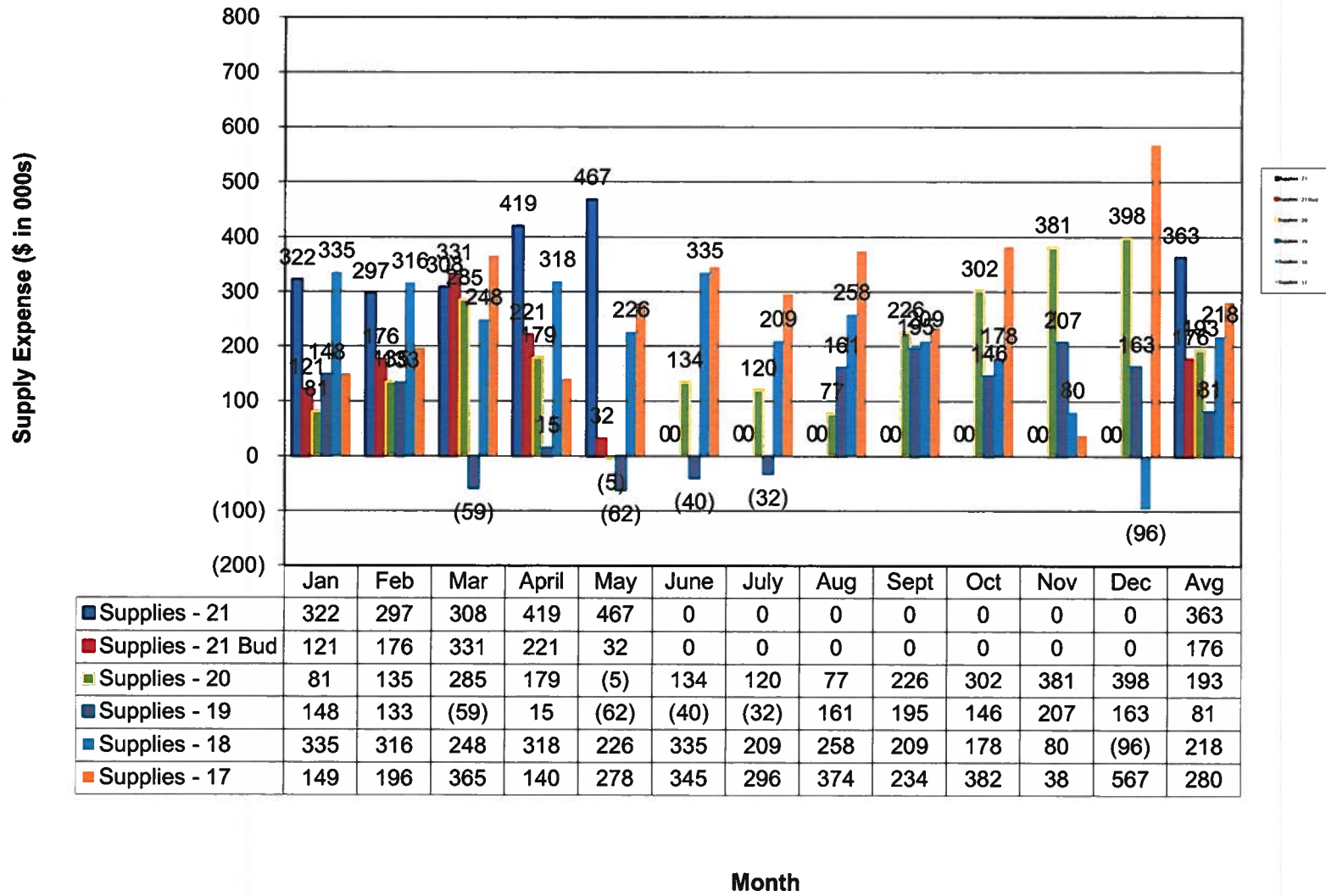
Salaries, Wages & Benefits(\$ in 000s)



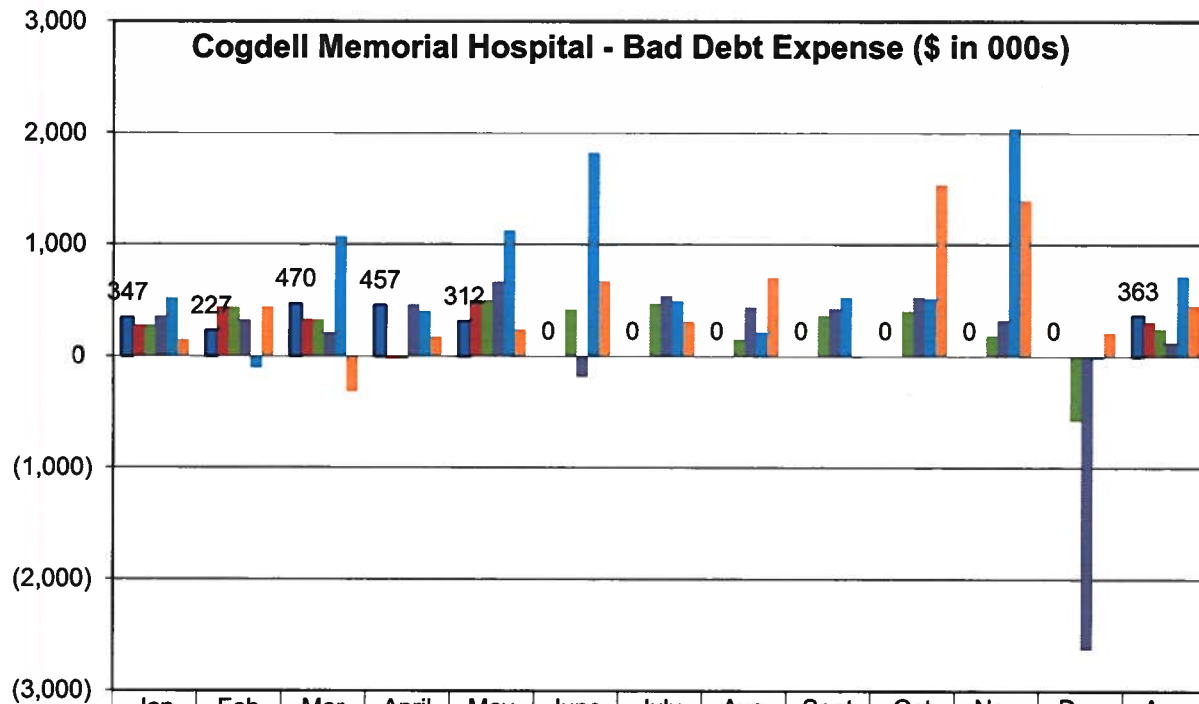
| | Jan | Feb | Mar | April | May | June | July | Aug | Sept | Oct | Nov | Dec | Avg |
|----------------|-------|-------|-------|-------|-------|-------|-------|-------|-------|-------|-------|-------|-------|
| ■ SWB - 21 | 2,113 | 1,997 | 2,227 | 2,300 | 2,060 | 0 | 0 | 0 | 0 | 0 | 0 | 0 | 2,139 |
| ■ SWB - 21 Bud | 1,859 | 1,956 | 2,030 | 2,457 | 1,726 | 0 | 0 | 0 | 0 | 0 | 0 | 0 | 2,006 |
| ■ SWB - 20 | 1,792 | 1,887 | 1,972 | 2,387 | 1,679 | 2,017 | 2,062 | 2,337 | 2,022 | 2,261 | 2,148 | 2,583 | 2,096 |
| ■ SWB - 19 | 1,756 | 1,754 | 1,832 | 1,738 | 1,884 | 1,726 | 1,861 | 2,073 | 2,001 | 2,154 | 2,438 | 2,131 | 1,946 |
| ■ SWB - 18 | 1,581 | 1,847 | 1,695 | 1,646 | 1,999 | 1,734 | 1,701 | 1,623 | 1,607 | 1,869 | 1,776 | 2,457 | 1,795 |
| ■ SWB - 17 | 1,476 | 1,444 | 1,405 | 1,761 | 1,808 | 1,284 | 1,728 | 2,044 | 1,812 | 1,177 | 1,362 | 1,627 | 1,577 |

Month

Cogdell Memorial Hospital - Supply Expense (\$ in 000s)



Bad Debt expense (\$ in 000s)



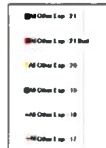
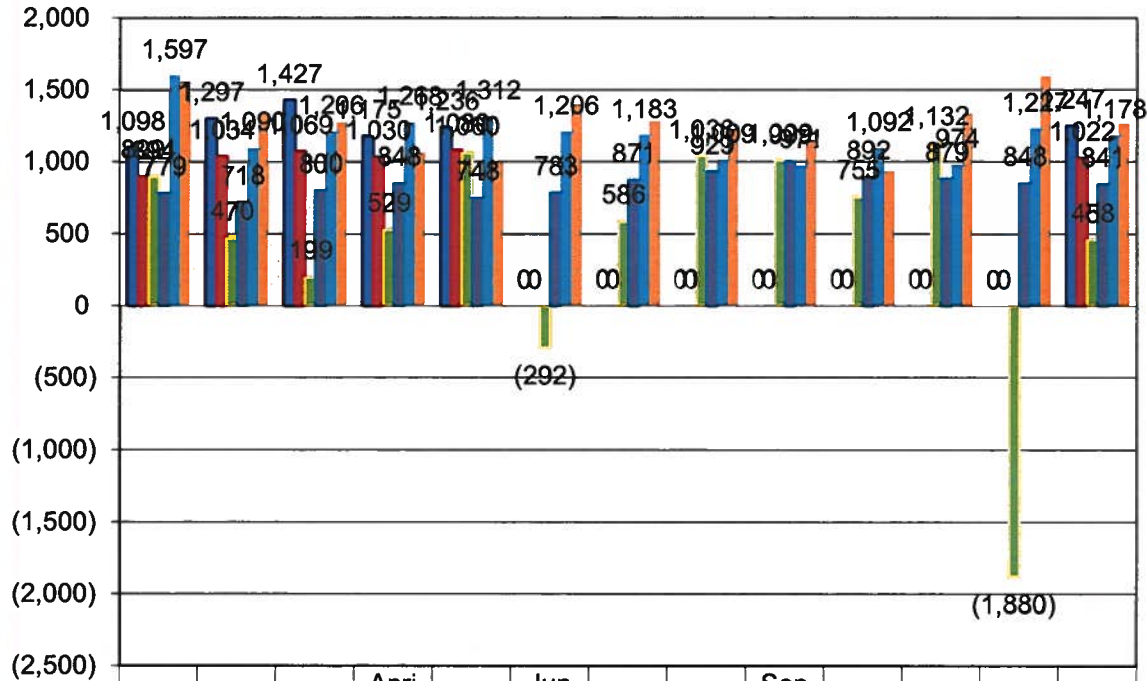
■ Bad Debts - 21
 ■ Bad Debts - 21 Bud
 ■ Bad Debts - 20
 ■ Bad Debts - 19
 ■ Bad Debts - 18
 ■ Bad Debts - 17

| | Jan | Feb | Mar | April | May | June | July | Aug | Sept | Oct | Nov | Dec | Avg |
|----------------------|-----|-------|-------|-------|-------|-------|------|-----|------|-------|-------|---------|-----|
| ■ Bad Debts - 21 | 347 | 227 | 470 | 457 | 312 | 0 | 0 | 0 | 0 | 0 | 0 | 0 | 363 |
| ■ Bad Debts - 21 Bud | 278 | 440 | 329 | (27) | 504 | 0 | 0 | 0 | 0 | 0 | 0 | 0 | 305 |
| ■ Bad Debts - 20 | 277 | 439 | 329 | (27) | 504 | 422 | 476 | 154 | 367 | 405 | 185 | (583) | 246 |
| ■ Bad Debts - 19 | 361 | 326 | 212 | 467 | 668 | (188) | 544 | 443 | 429 | 531 | 322 | (2,624) | 124 |
| ■ Bad Debts - 18 | 524 | (107) | 1,068 | 405 | 1,120 | 1,818 | 501 | 217 | 532 | 517 | 2,044 | (25) | 718 |
| ■ Bad Debts - 17 | 149 | 442 | (321) | 174 | 241 | 674 | 310 | 708 | (12) | 1,534 | 1,393 | 211 | 459 |

Month

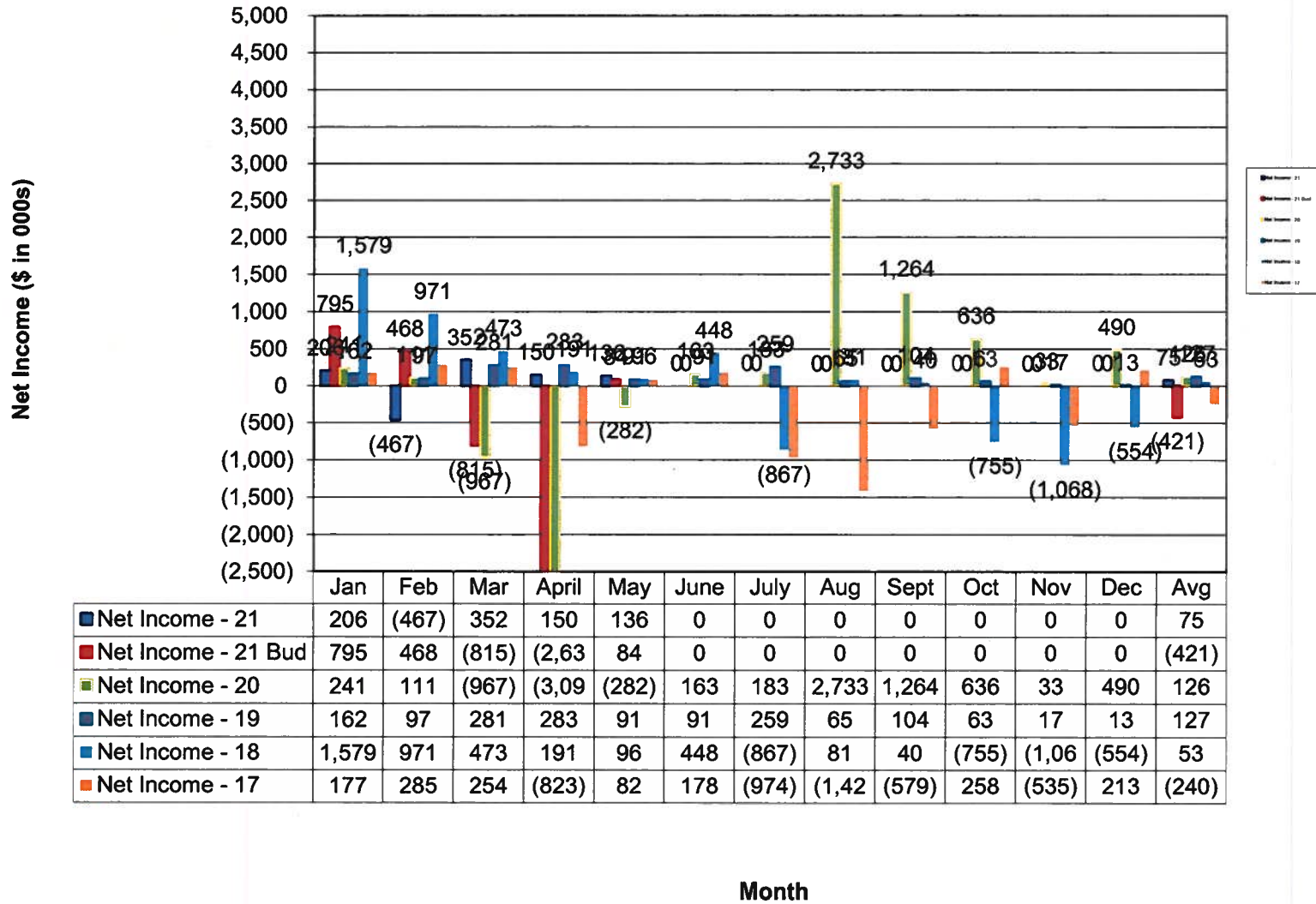
Cogdell Memorial Hospital - All Other Operating Expense (\$ in 000s)

All Other Operating Expense (\$ in 000s)



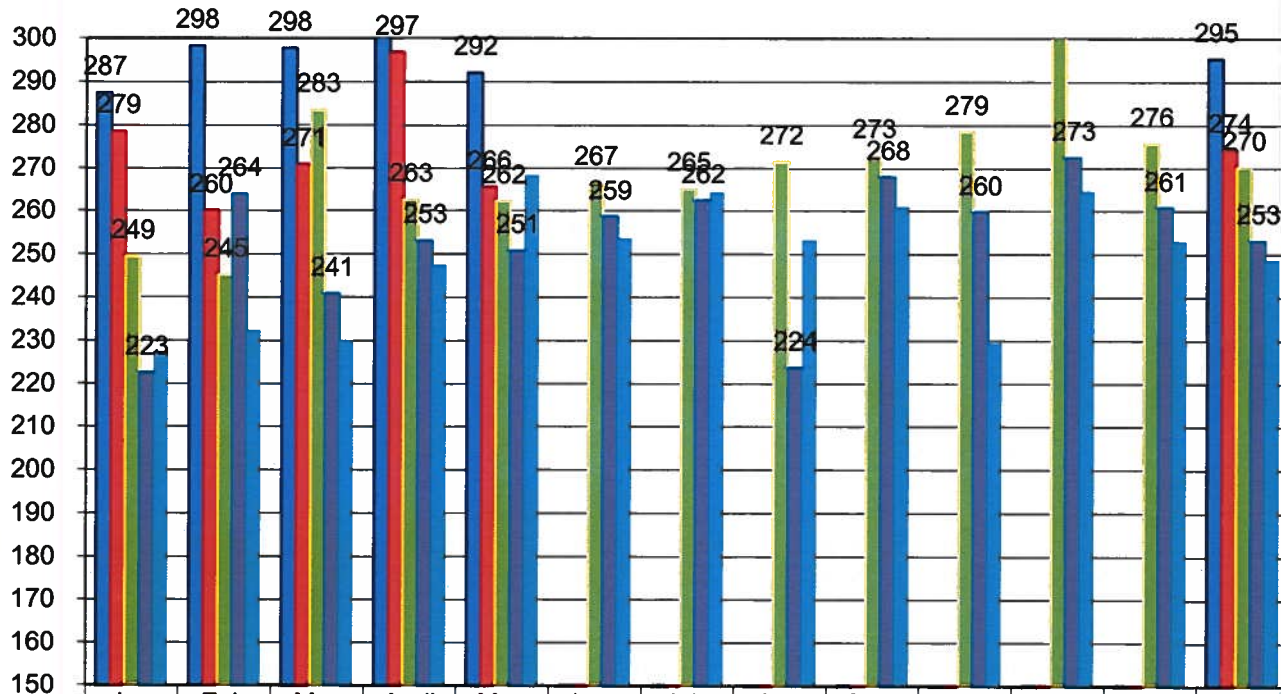
Month

Cogdell Memorial Hospital - Net Income (\$ in 000s)



Cogdell Memorial Hospital - FTEs

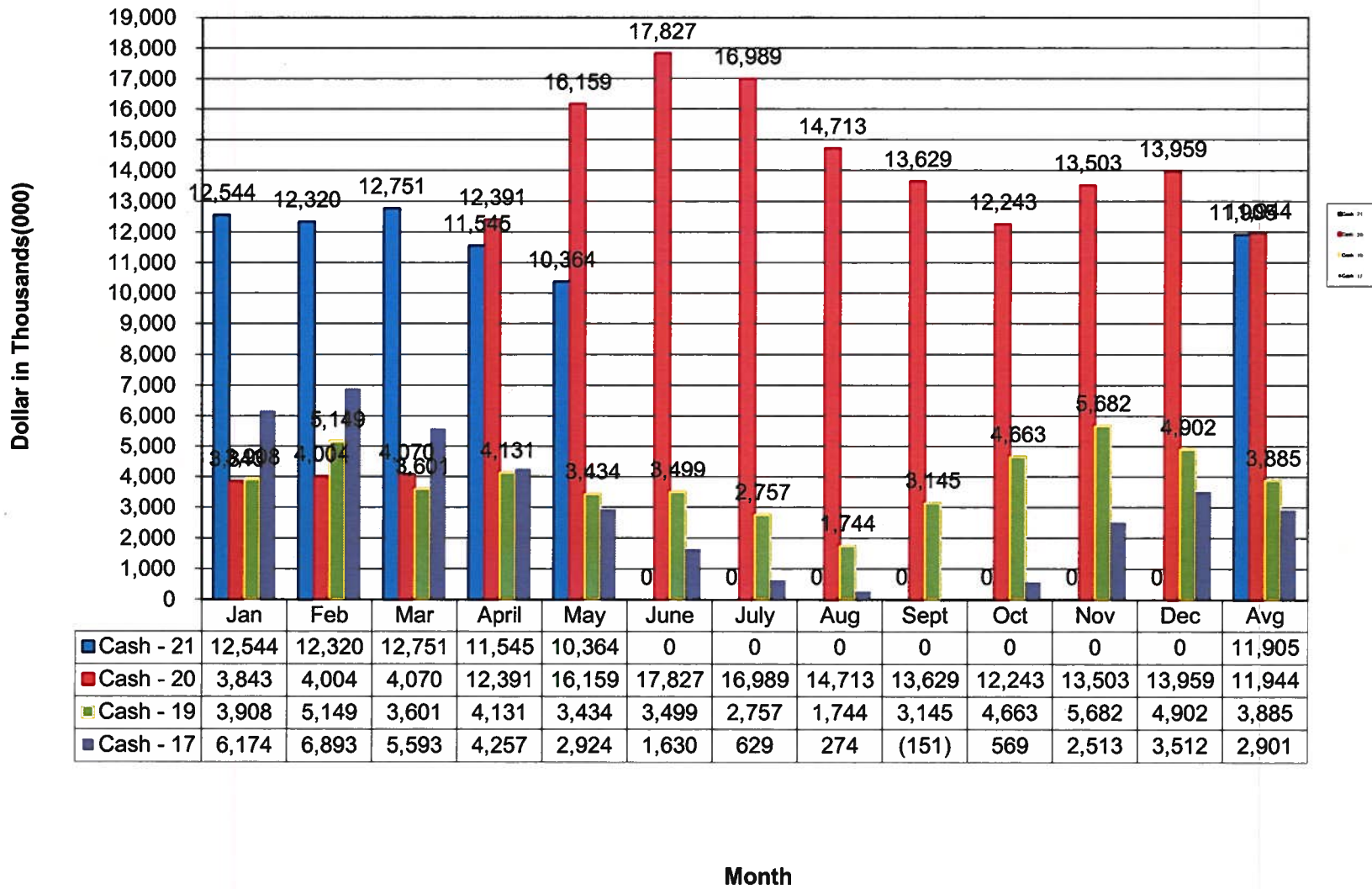
FTEs



| | Jan | Feb | Mar | April | May | June | July | Aug | Sept | Oct | Nov | Dec | Avg |
|-----------------|-----|-----|-----|-------|-----|------|------|-----|------|-----|-----|-----|-----|
| ■ FTEs - 21 | 287 | 298 | 298 | 301 | 292 | 0 | 0 | 0 | 0 | 0 | 0 | 0 | 295 |
| ■ FTEs - 21 Bud | 279 | 260 | 271 | 297 | 266 | 0 | 0 | 0 | 0 | 0 | 0 | 0 | 274 |
| ■ FTEs - 19 | 249 | 245 | 283 | 263 | 262 | 267 | 265 | 272 | 273 | 279 | 310 | 276 | 270 |
| ■ FTEs - 18 | 223 | 264 | 241 | 253 | 251 | 259 | 262 | 224 | 268 | 260 | 273 | 261 | 253 |
| ■ FTEs - 17 | 227 | 232 | 230 | 248 | 268 | 254 | 264 | 253 | 261 | 230 | 265 | 253 | 249 |

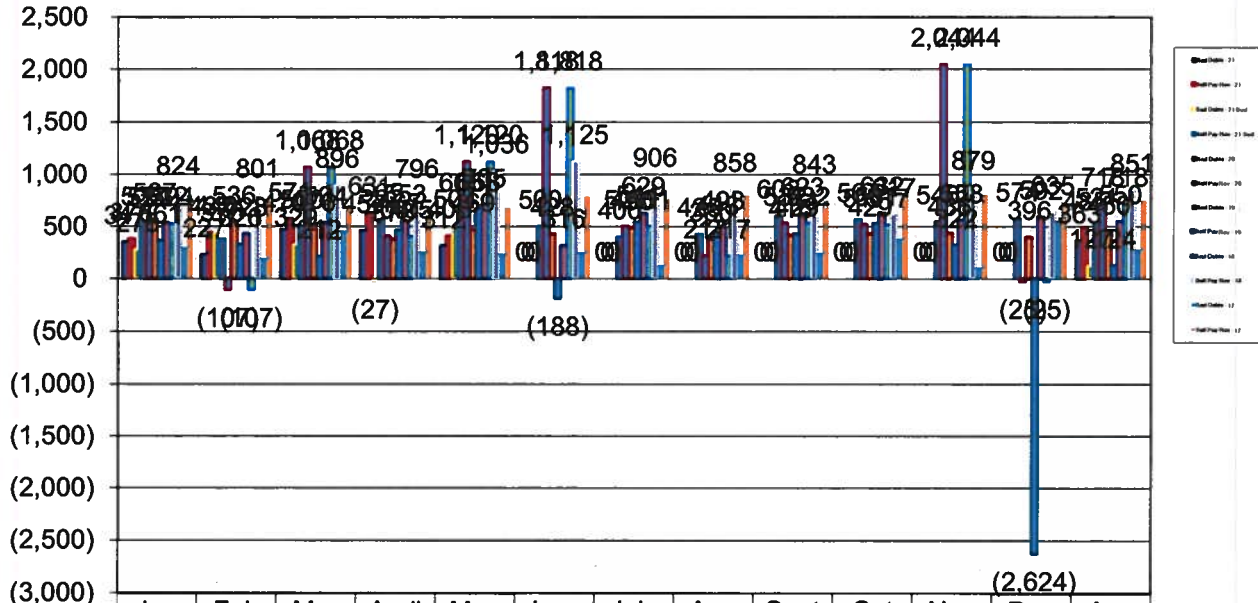
Month

Cogdell Memorial Hospital - Cash



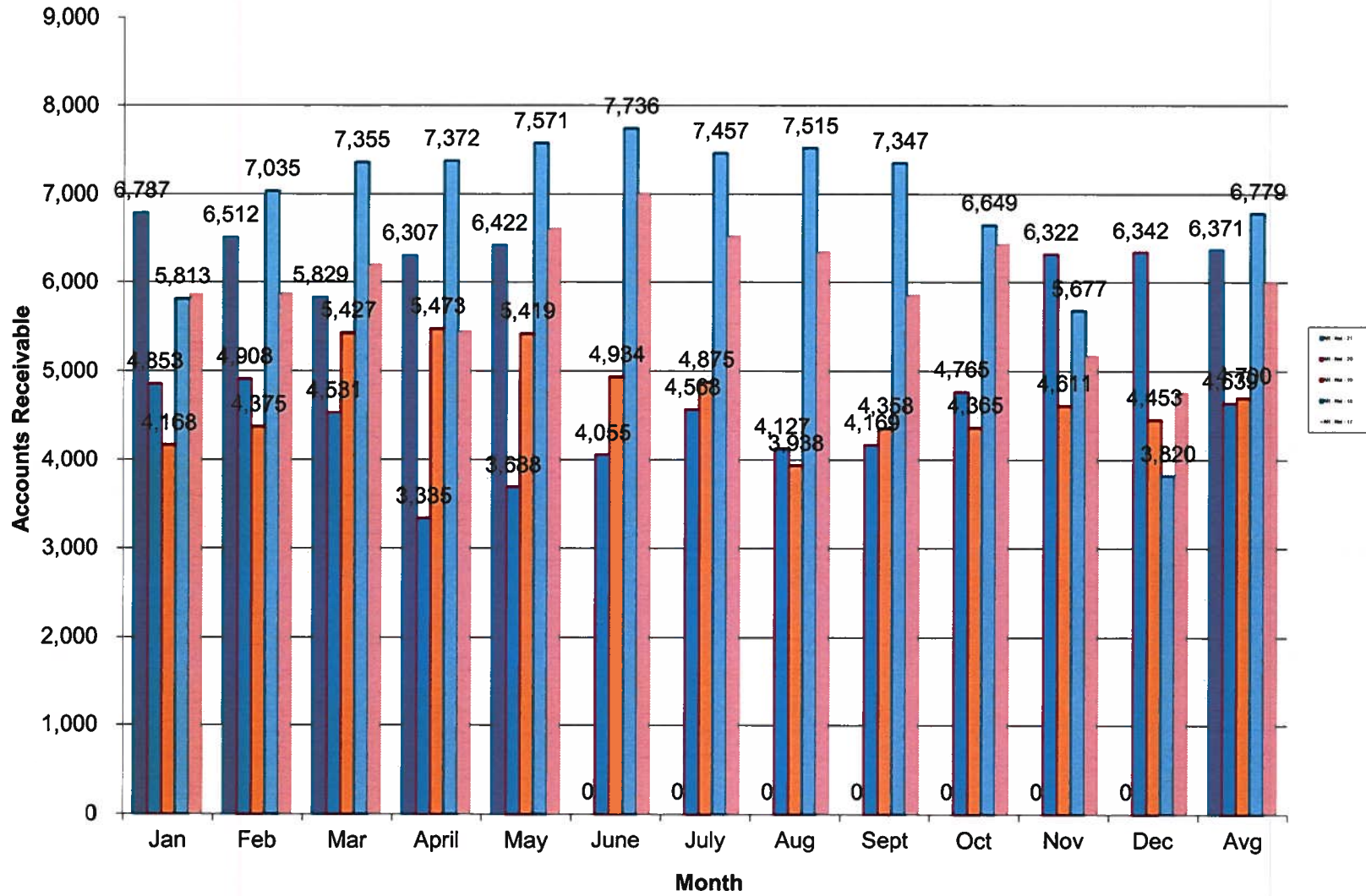
Cogdell Memorial Hospital - Self Pay Rev & Bad Debts

Dollars in Thousands(000)



| | Jan | Feb | Mar | April | May | June | July | Aug | Sept | Oct | Nov | Dec | Avg |
|-----------------------|-----|-------|-------|-------|-------|-------|------|-----|------|-----|-------|---------|-----|
| Bad Debts - 21 | 347 | 227 | 470 | 457 | 312 | 0 | 0 | 0 | 0 | 0 | 0 | 0 | 363 |
| Self Pay Rev - 21 | 376 | 437 | 571 | 631 | 408 | 0 | 0 | 0 | 0 | 0 | 0 | 0 | 485 |
| Bad Debts - 21 Bud | 278 | 440 | 329 | (27) | 504 | 0 | 0 | 0 | 0 | 0 | 0 | 0 | 127 |
| Self Pay Rev - 21 Bud | 532 | 376 | 500 | 565 | 665 | 500 | 400 | 425 | 603 | 567 | 546 | 574 | 521 |
| Bad Debts - 20 | 524 | (107) | 1,068 | 405 | 1,120 | 1,818 | 501 | 217 | 532 | 517 | 2,044 | (25) | 718 |
| Self Pay Rev - 20 | 567 | 536 | 476 | 378 | 469 | 428 | 490 | 380 | 416 | 429 | 436 | 396 | 450 |
| Bad Debts - 19 | 361 | 326 | 212 | 467 | 668 | (188) | 544 | 443 | 429 | 531 | 322 | (2,624) | 124 |
| Self Pay Rev - 19 | 532 | 428 | 534 | 553 | 705 | 316 | 629 | 493 | 623 | 632 | 558 | 592 | 550 |
| Bad Debts - 18 | 524 | (107) | 1,068 | 405 | 1,120 | 1,818 | 501 | 217 | 532 | 517 | 2,044 | (25) | 718 |
| Self Pay Rev - 18 | 824 | 801 | 896 | 796 | 1,036 | 1,125 | 906 | 858 | 843 | 617 | 879 | 635 | 851 |
| Bad Debts - 17 | 298 | 193 | 458 | 258 | 238 | 252 | 131 | 229 | 245 | 380 | 108 | 553 | 279 |
| Self Pay Rev - 17 | 795 | 745 | 698 | 608 | 678 | 787 | 763 | 795 | 747 | 795 | 806 | 735 | 746 |

Cogdell Memorial Hospital - Accounts Receivable



Cogdell Memorial Hospital Cash Collections

