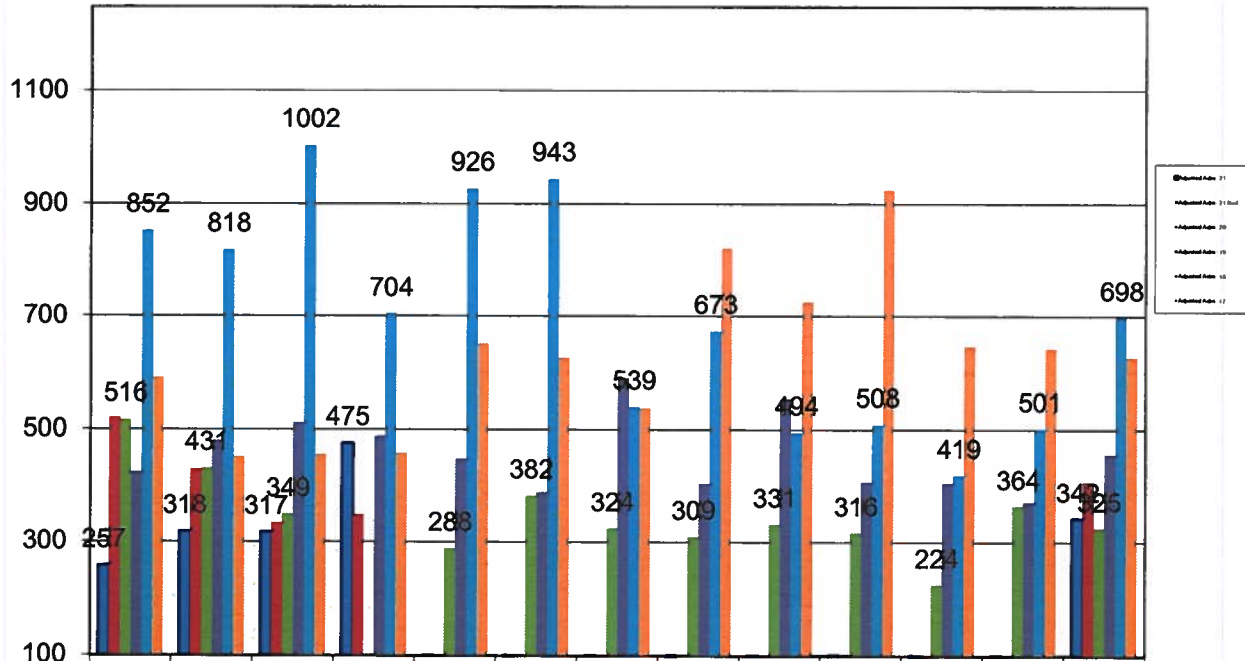


Cogdell Memorial Hospital - Adjusted Admissions

Adjusted Admissions - Excl Asst. Living

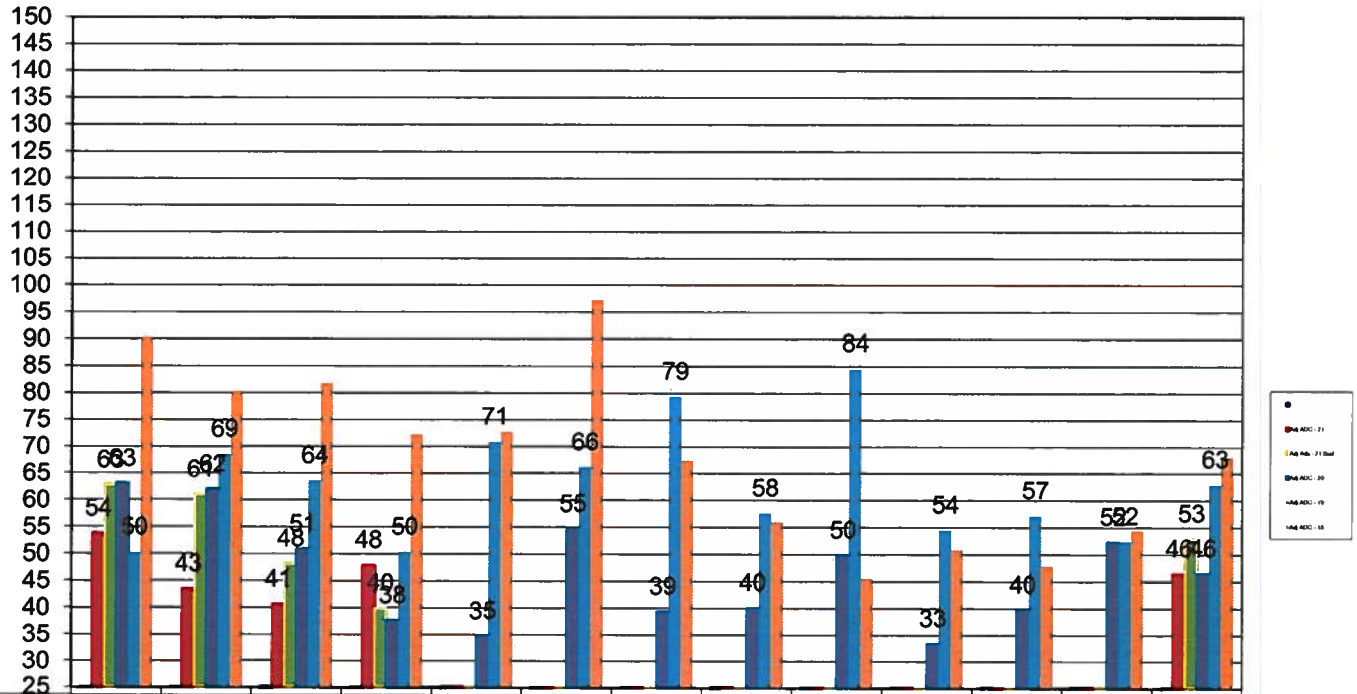


	Jan	Feb	Mar	April	May	Jun e	July	Aug	Sept	Oct	Nov	Dec	Avg
Adjusted Adm - 21	257	318	317	475	0	0	0	0	0	0	0	0	342
Adjusted Adm - 21 Bud	520	429	334	348	0	0	0	0	0	0	0	0	408
Adjusted Adm - 20	516	431	349	60	288	382	324	309	331	316	224	364	325
Adjusted Adm - 19	424	480	512	488	448	389	590	404	553	407	405	371	456
Adjusted Adm - 18	852	818	1002	704	926	943	539	673	494	508	419	501	698
Adjusted Adm - 17	590	451	455	458	651	626	537	821	725	924	646	642	627

Month

Cogdell Memorial Hospital - Adj. Average Daily Census

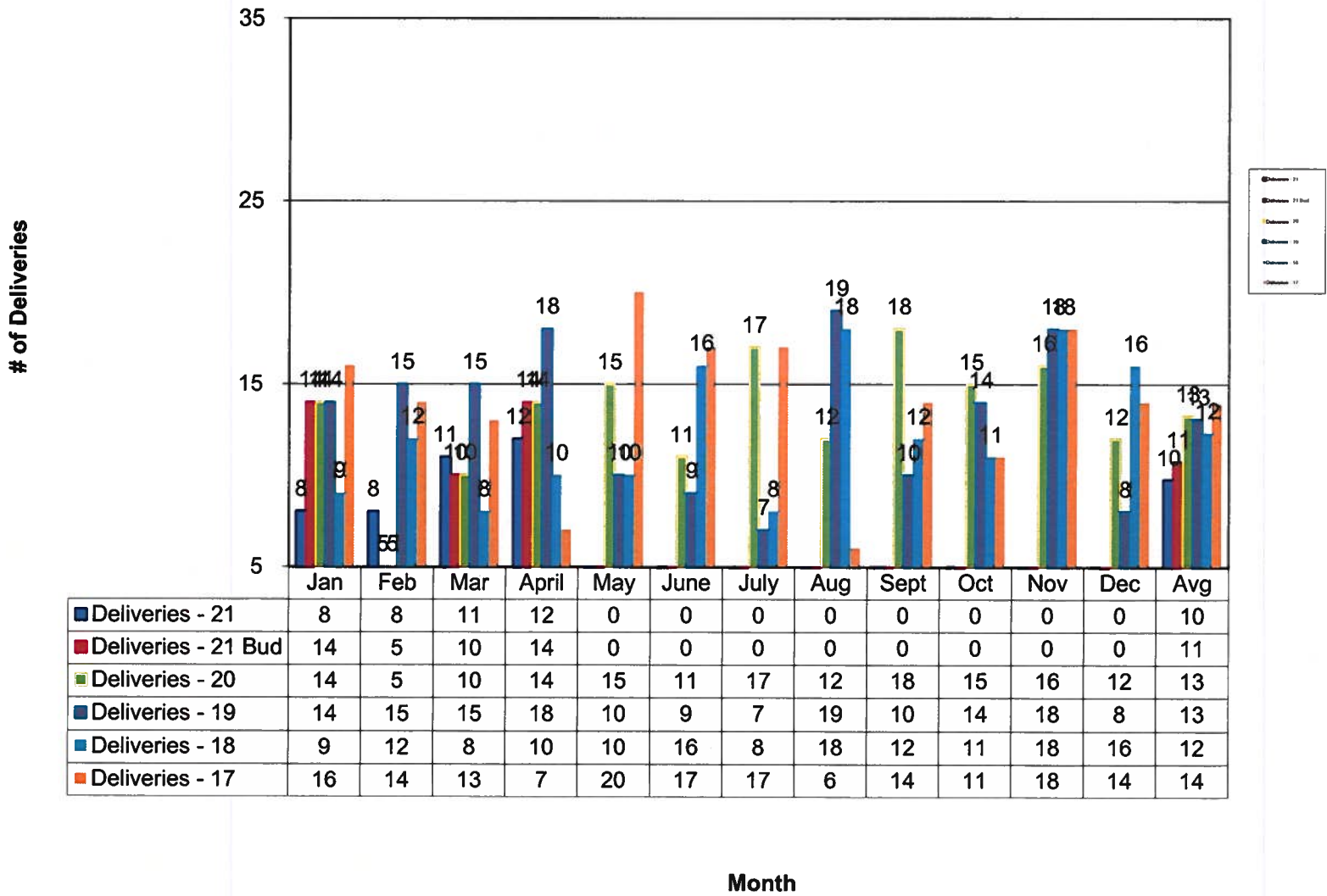
Average Daily Census - Excl. Asst. Living



■	0	0	0	0	0	0	0	0	0	0	0	0	0
■ Adj ADC - 21	54	43	41	48	0	0	0	0	0	0	0	0	46
■ Adj Adc - 21 Bud	63	61	48	40	0	0	0	0	0	0	0	0	53
■ Adj ADC - 20	63	62	51	38	35	55	39	40	50	33	40	52	46
■ Adj ADC - 19	50	69	64	50	71	66	79	58	84	54	57	52	63
■ Adj ADC - 18	90	80	82	72	73	97	67	56	46	51	48	54	68

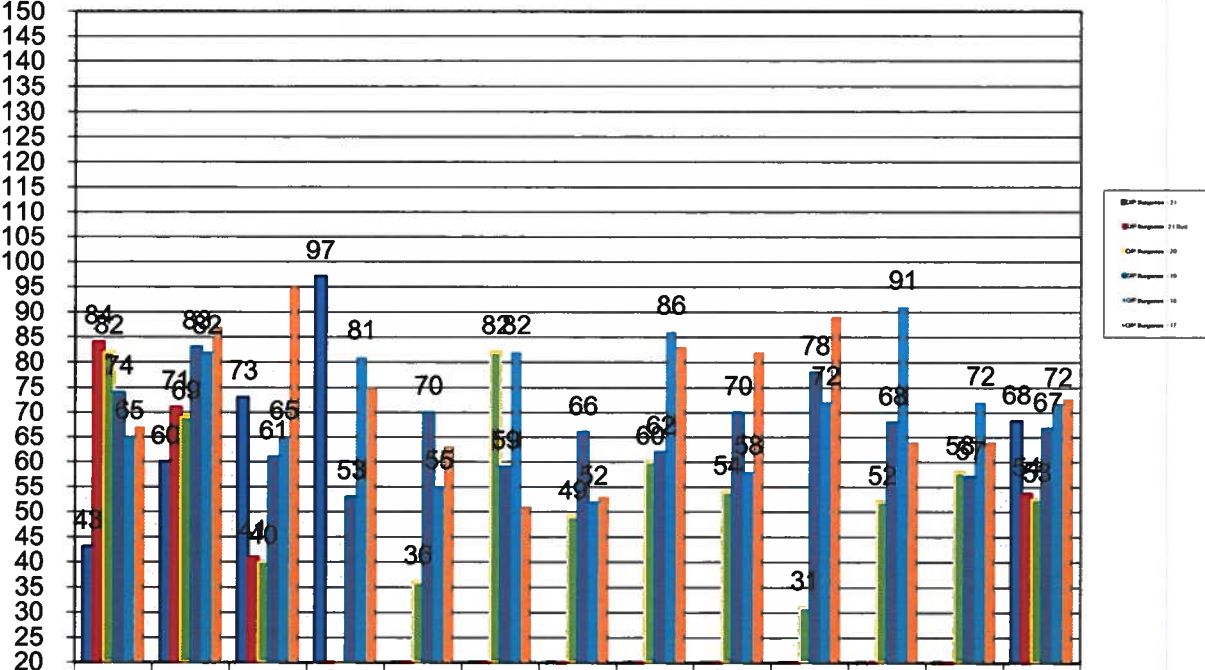
Month

Cogdell Memorial Hospital- Deliveries



Cogdell Memorial Hospital - Outpatient Surgeries

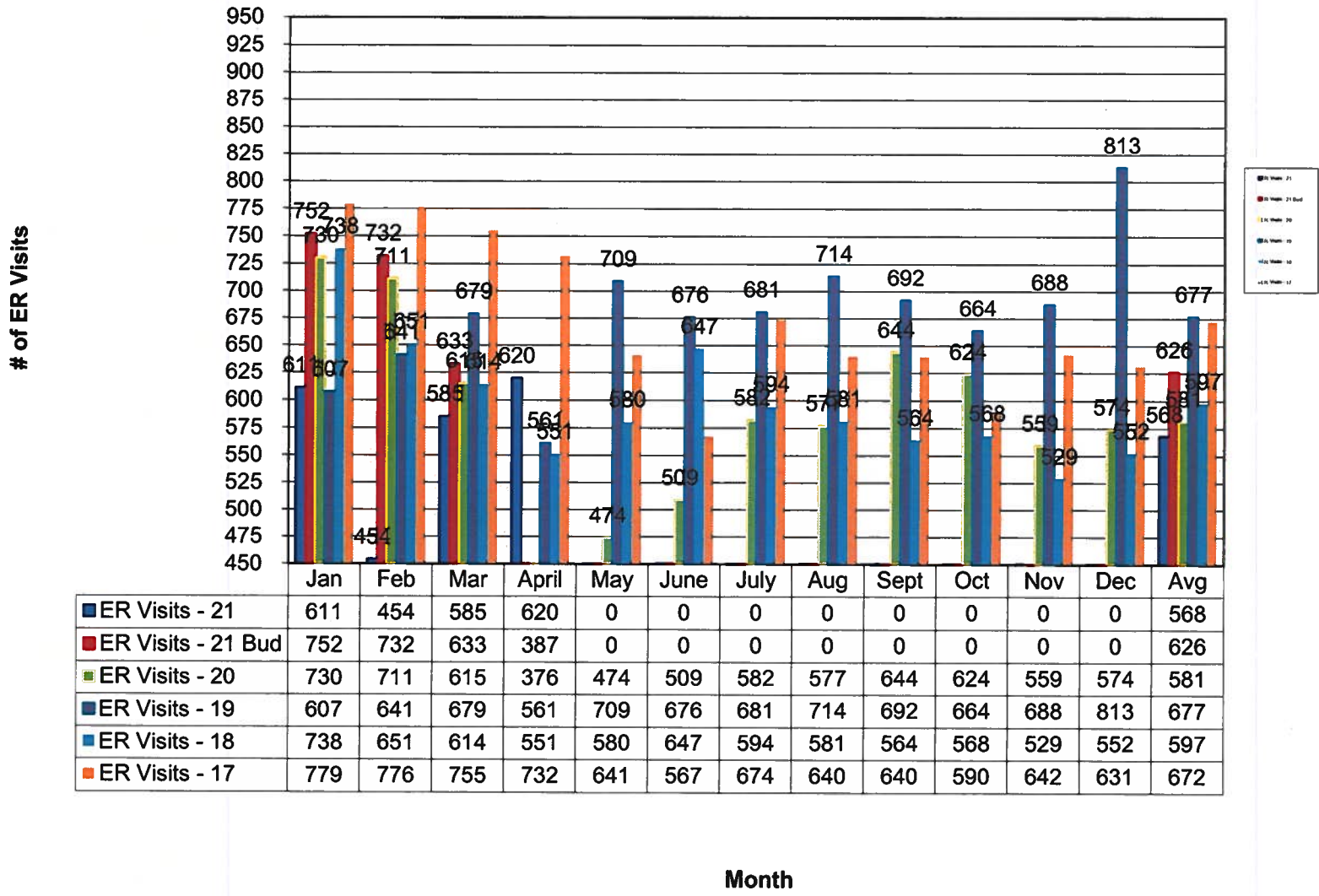
of Outpatient Surgeries



	Jan	Feb	Mar	April	May	June	July	Aug	Sept	Oct	Nov	Dec	Avg
■ O/P Surgeries - 21	43	60	73	97	0	0	0	0	0	0	0	0	68
■ O/P Surgeries - 21 Bud	84	71	41	19	0	0	0	0	0	0	0	0	54
■ O/P Surgeries - 20	82	69	40	18	36	82	49	60	54	31	52	58	53
■ O/P Surgeries - 19	74	83	61	53	70	59	66	62	70	78	68	57	67
■ O/P Surgeries - 18	65	82	65	81	55	82	52	86	58	72	91	72	72
■ O/P Surgeries - 17	67	87	95	75	63	51	53	83	82	89	64	64	73

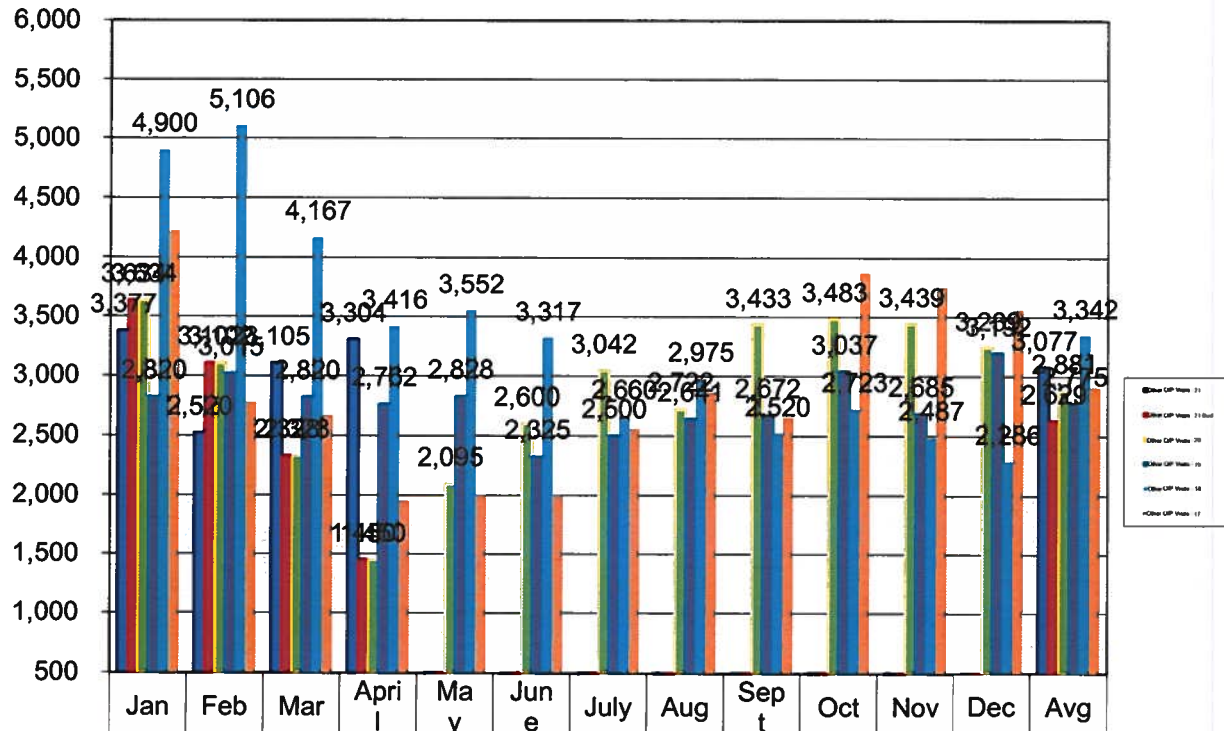
Month

Cogdell Memorial Hospital - ER Visits



Cogdell Memorial Hospital - Other Outpatient Visits

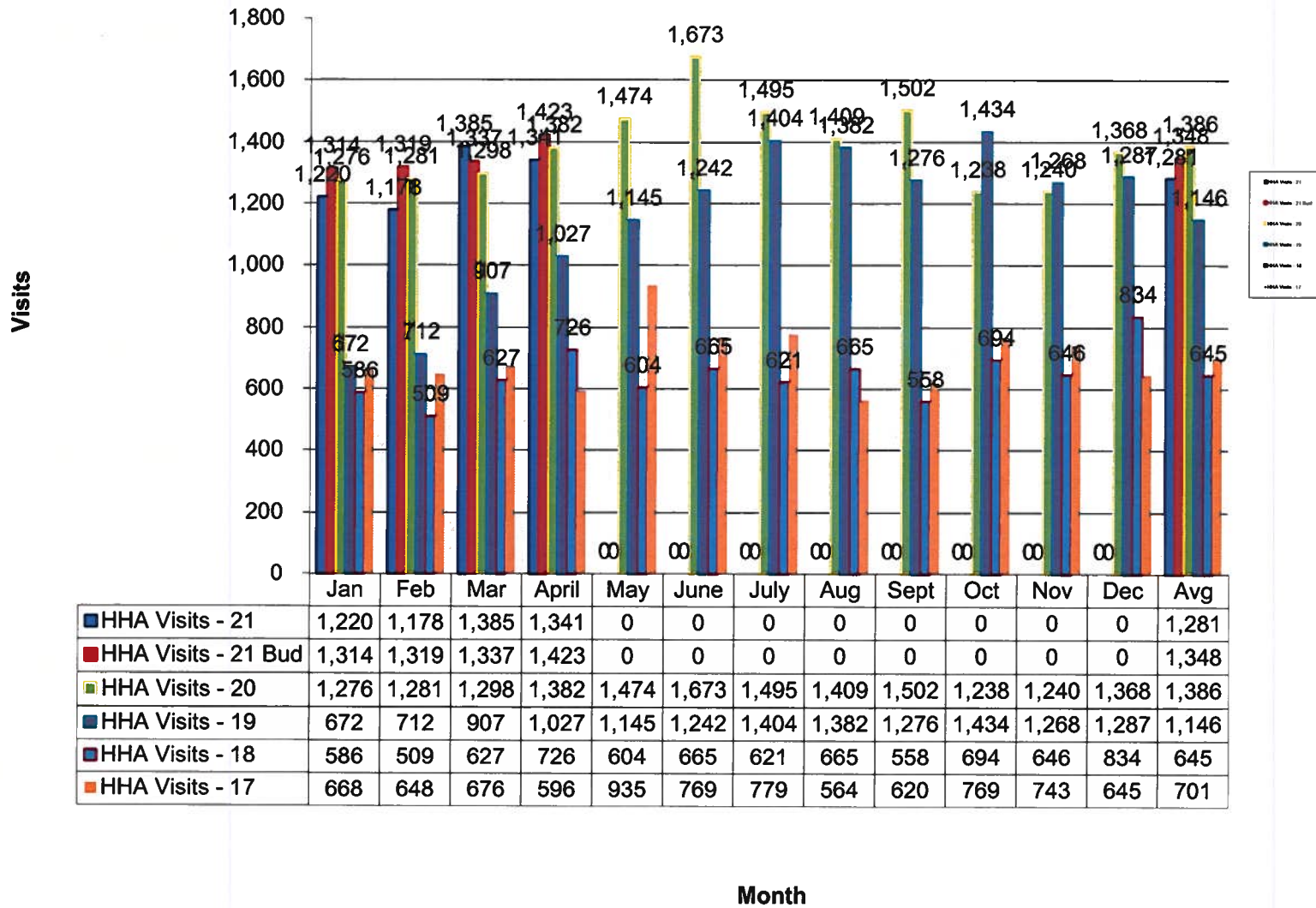
of Other Outpatient Visits



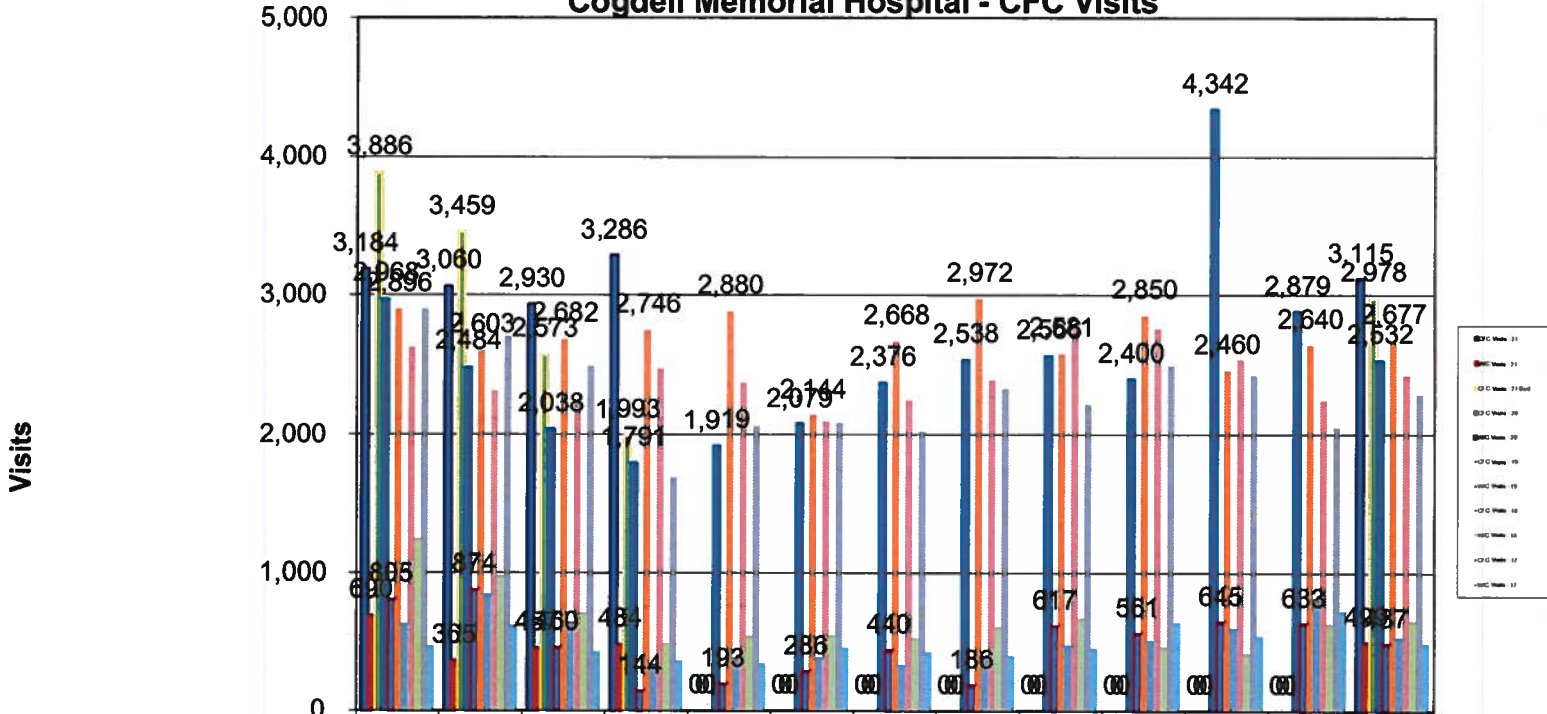
	Jan	Feb	Mar	April	May	June	July	Aug	Sept	Oct	Nov	Dec	Avg
Other O/P Visits - 21	3,377	2,520	3,105	3,304	0	0	0	0	0	0	0	0	3,077
Other O/P Visits - 21 Bud	3,634	3,102	2,328	1,450	0	0	0	0	0	0	0	0	2,629
Other O/P Visits - 20	3,634	3,102	2,328	1,450	2,095	2,600	3,042	2,722	3,433	3,483	3,439	3,239	2,881
Other O/P Visits - 19	2,820	3,015	2,820	2,762	2,828	2,325	2,500	2,641	2,672	3,037	2,685	3,192	2,775
Other O/P Visits - 18	4,900	5,106	4,167	3,416	3,552	3,317	2,660	2,975	2,520	2,723	2,487	2,286	3,342
Other O/P Visits - 17	4,225	2,777	2,667	1,954	2,000	2,000	2,556	2,864	2,656	3,875	3,752	3,561	2,907

Month

Cogdell Memorial Hospital - HHA Visits

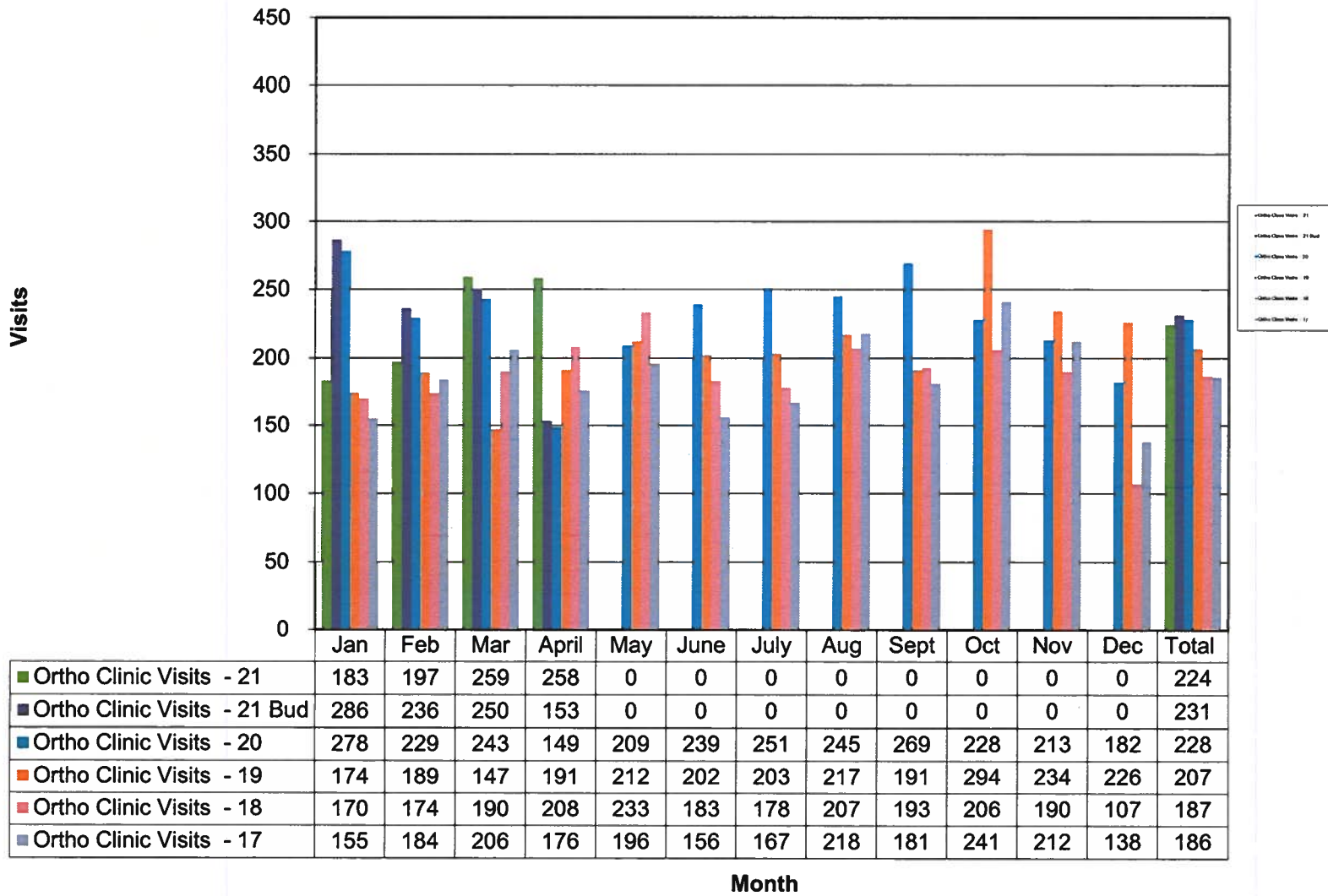


Cogdell Memorial Hospital - CFC Visits

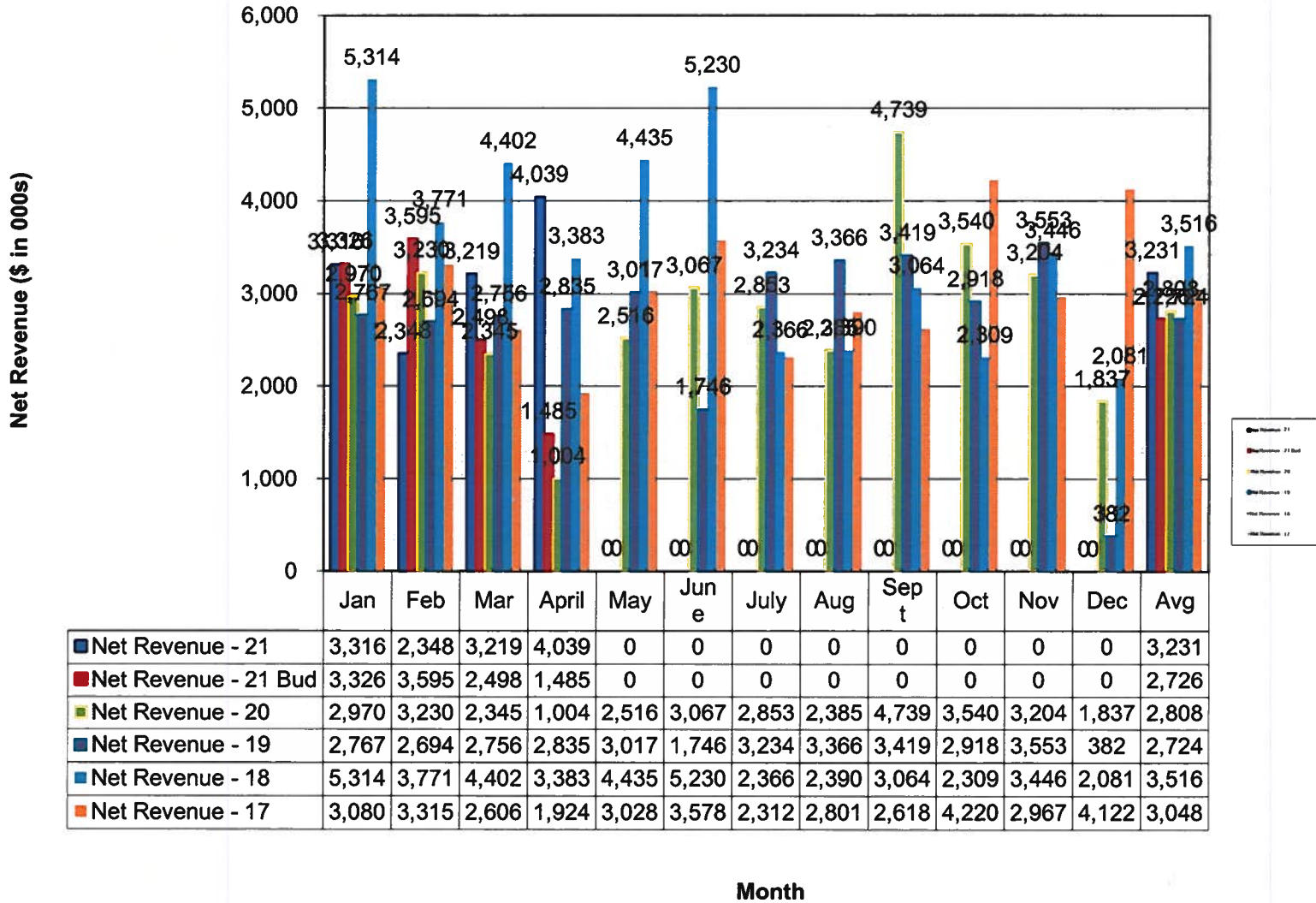


	Jan	Feb	Mar	April	May	June	July	Aug	Sept	Oct	Nov	Dec	Avg
■ CFC Visits - 21	3,184	3,060	2,930	3,286	0	0	0	0	0	0	0	0	3,115
■ W/C Visits - 21	690	365	457	484	0	0	0	0	0	0	0	0	499
■ CFC Visits - 21 Bud	3,886	3,459	2,573	1,993	0	0	0	0	0	0	0	0	2,978
■ CFC Visits - 20	2,968	2,484	2,038	1,791	1,919	2,079	2,376	2,538	2,566	2,400	4,342	2,879	2,532
■ W/C Visits - 20	805	874	460	144	193	286	440	186	617	561	645	633	487
■ CFC Visits - 19	2,896	2,603	2,682	2,746	2,880	2,144	2,668	2,972	2,581	2,850	2,460	2,640	2,677
■ W/C Visits - 19	635	850	648	344	390	392	336	405	483	517	606	825	536
■ CFC Visits - 18	2,623	2,314	2,245	2,477	2,374	2,096	2,247	2,393	2,802	2,757	2,539	2,245	2,426
■ W/C Visits - 18	1,245	981	714	493	548	553	535	612	675	470	422	636	657
■ CFC Visits - 17	2,900	2,704	2,494	1,688	2,058	2,084	2,023	2,331	2,217	2,498	2,426	2,048	2,289
■ W/C Visits - 17	473	624	432	365	348	463	433	402	460	646	549	729	494

Cogdell Memorial Hospital - Ortho Visits

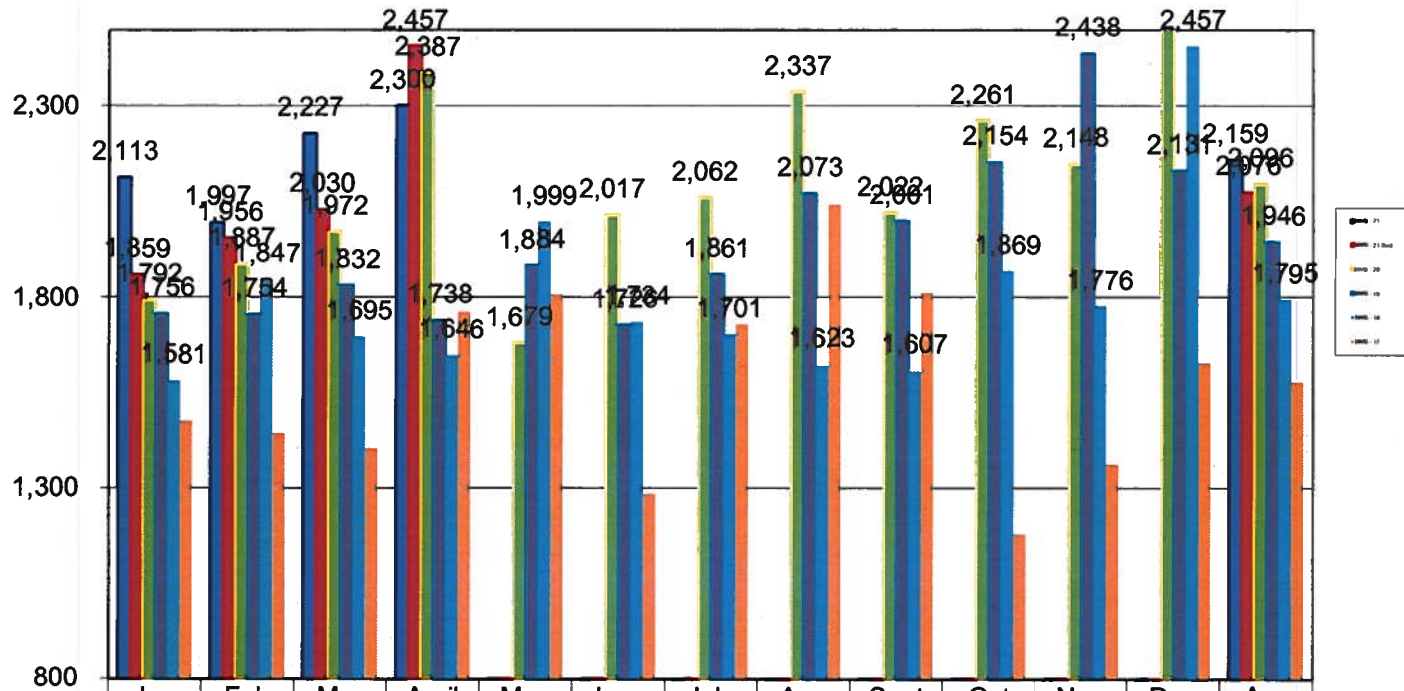


Cogdell Memorial Hospital - Net Revenue (\$ in 000s)



Cogdell Memorial Hospital - Salaries, Wages & Benefits (\$ in 000s)

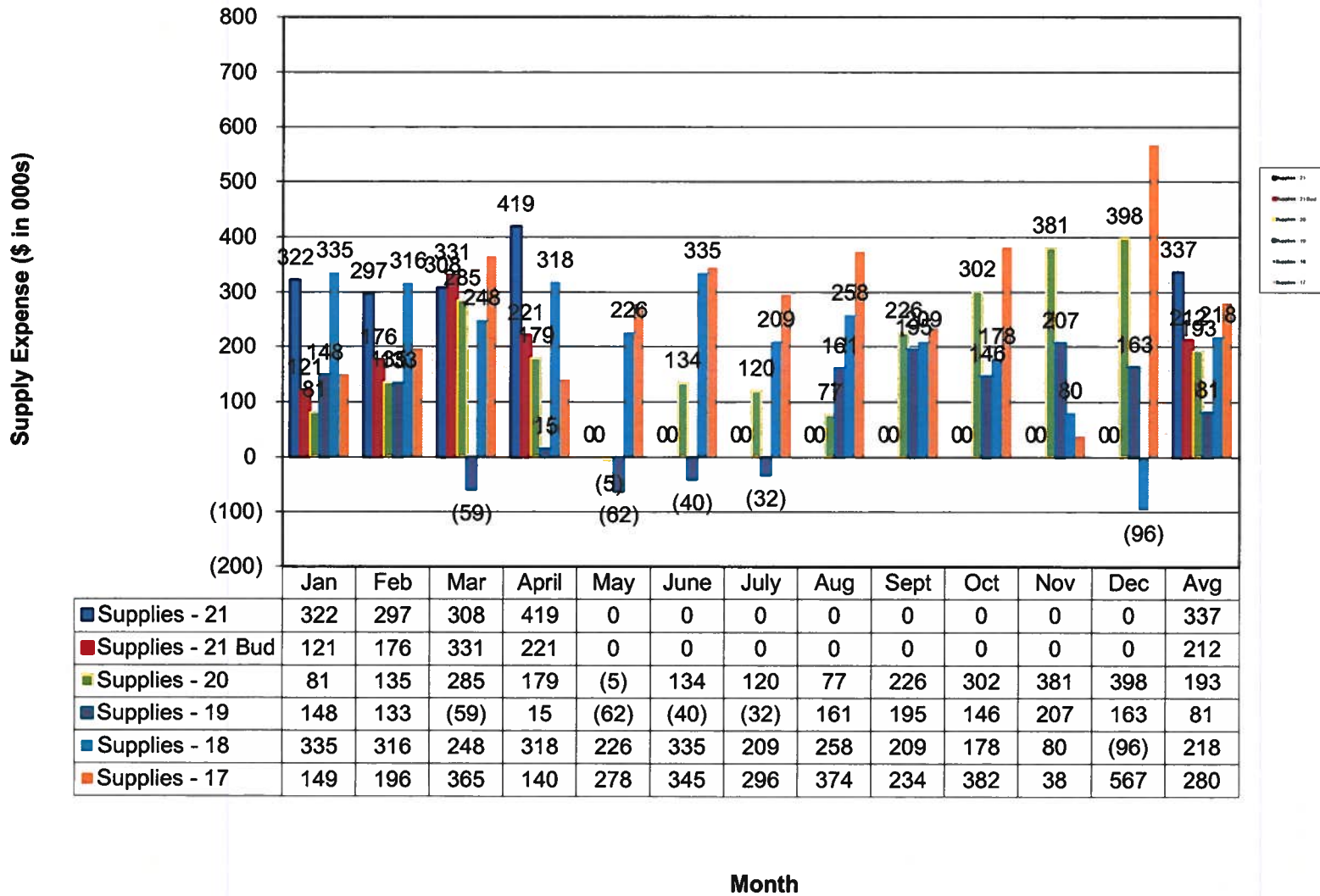
Salaries, Wages & Benefits(\$ in 000s)



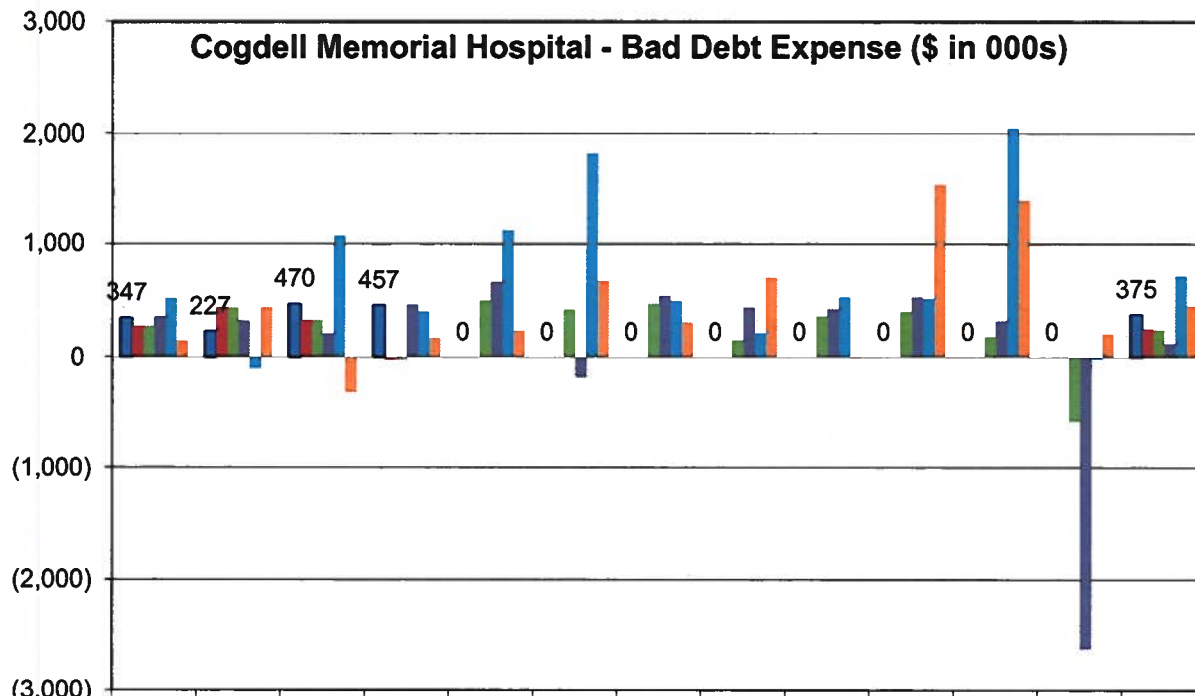
	Jan	Feb	Mar	April	May	June	July	Aug	Sept	Oct	Nov	Dec	Avg
■ SWB - 21	2,113	1,997	2,227	2,300	0	0	0	0	0	0	0	0	2,159
■ SWB - 21 Bud	1,859	1,956	2,030	2,457	0	0	0	0	0	0	0	0	2,076
■ SWB - 20	1,792	1,887	1,972	2,387	1,679	2,017	2,062	2,337	2,022	2,261	2,148	2,583	2,096
■ SWB - 19	1,756	1,754	1,832	1,738	1,884	1,726	1,861	2,073	2,001	2,154	2,438	2,131	1,946
■ SWB - 18	1,581	1,847	1,695	1,646	1,999	1,734	1,701	1,623	1,607	1,869	1,776	2,457	1,795
■ SWB - 17	1,476	1,444	1,405	1,761	1,808	1,284	1,728	2,044	1,812	1,177	1,362	1,627	1,577

Month

Cogdell Memorial Hospital - Supply Expense (\$ in 000s)



Bad Debt expense (\$ in 000s)

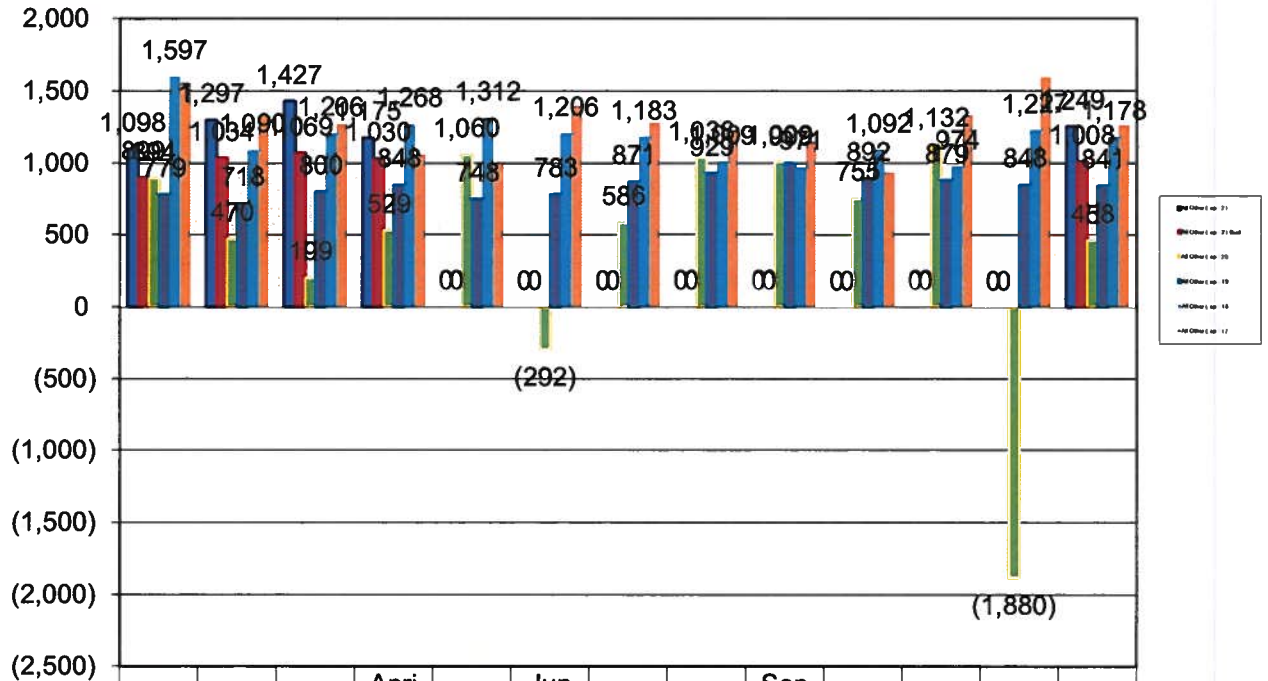


	Jan	Feb	Mar	April	May	June	July	Aug	Sept	Oct	Nov	Dec	Avg
■ Bad Debts - 21	347	227	470	457	0	0	0	0	0	0	0	0	375
■ Bad Debts - 21 Bud	278	440	329	(27)	0	0	0	0	0	0	0	0	255
■ Bad Debts - 20	277	439	329	(27)	504	422	476	154	367	405	185	(583)	246
■ Bad Debts - 19	361	326	212	467	668	(188)	544	443	429	531	322	(2,624)	124
■ Bad Debts - 18	524	(107)	1,068	405	1,120	1,818	501	217	532	517	2,044	(25)	718
■ Bad Debts - 17	149	442	(321)	174	241	674	310	708	(12)	1,534	1,393	211	459

Month

Cogdell Memorial Hospital - All Other Operating Expense (\$ in 000s)

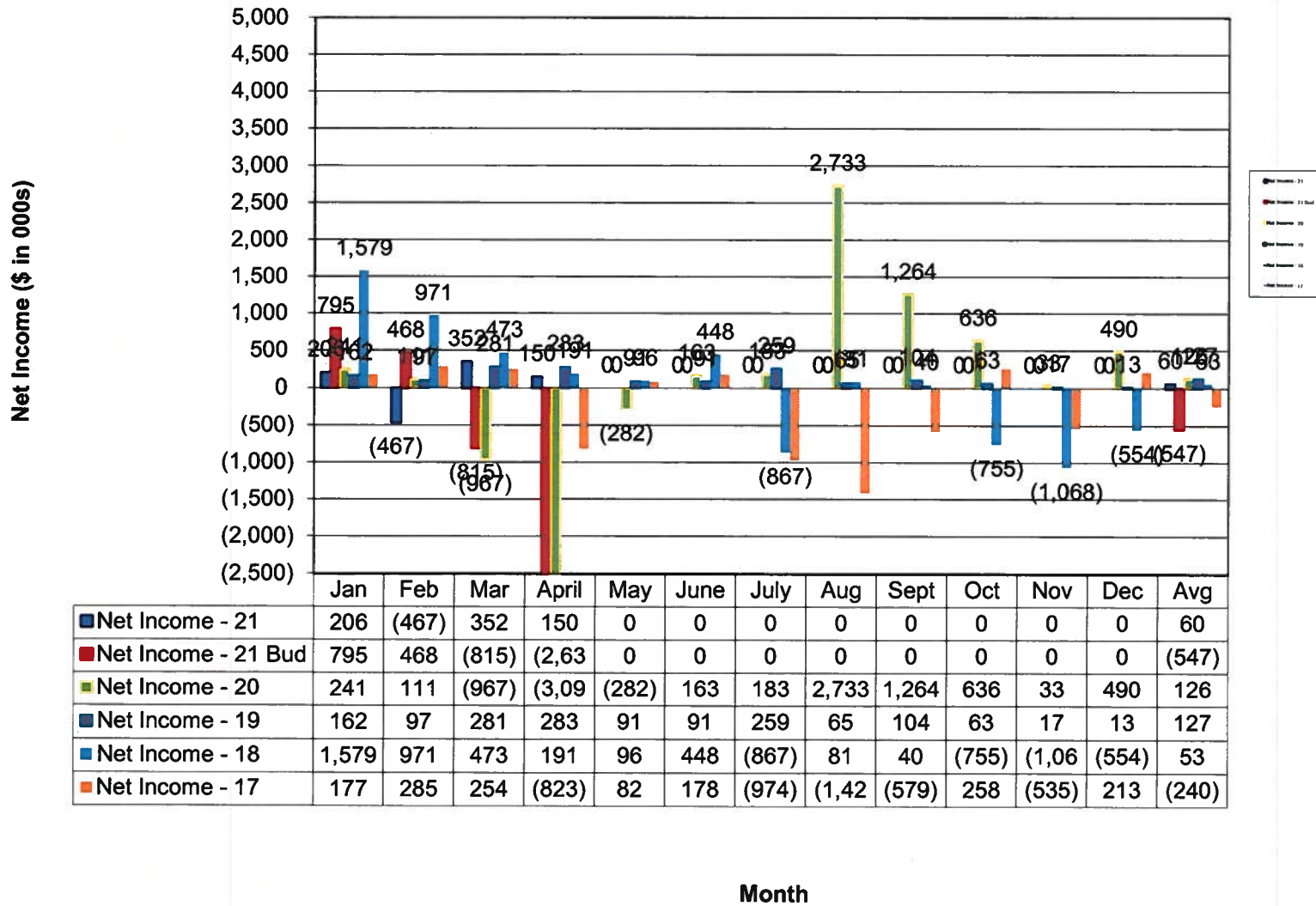
All Other Operating Expense (\$ in 000s)



	Jan	Feb	Mar	April	May	June	July	Aug	Sept	Oct	Nov	Dec	Avg
All Other Exp - 21	1,098	1,297	1,427	1,175	0	0	0	0	0	0	0	0	1,249
All Other Exp - 21 Bud	899	1,034	1,069	1,030	0	0	0	0	0	0	0	0	1,008
All Other Exp - 20	894	470	199	529	1,060	(292)	586	1,038	1,009	755	1,132	(1,880)	458
All Other Exp - 19	779	718	800	848	748	783	871	929	999	892	879	848	841
All Other Exp - 18	1,597	1,090	1,206	1,268	1,312	1,206	1,183	1,009	971	1,092	974	1,227	1,178
All Other Exp - 17	1,557	1,331	1,270	1,059	994	1,397	1,280	1,227	1,150	932	1,333	1,593	1,260

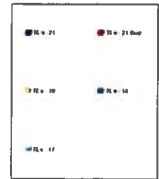
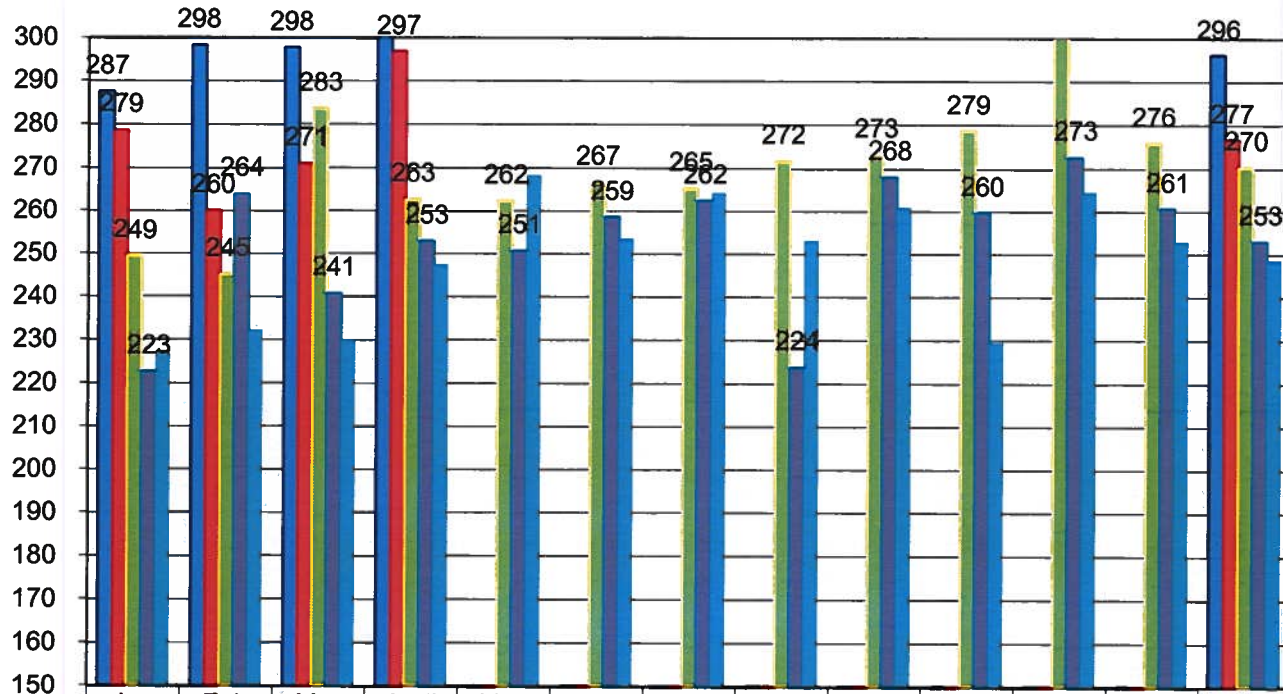
Month

Cogdell Memorial Hospital - Net Income (\$ in 000s)



Cogdell Memorial Hospital - FTEs

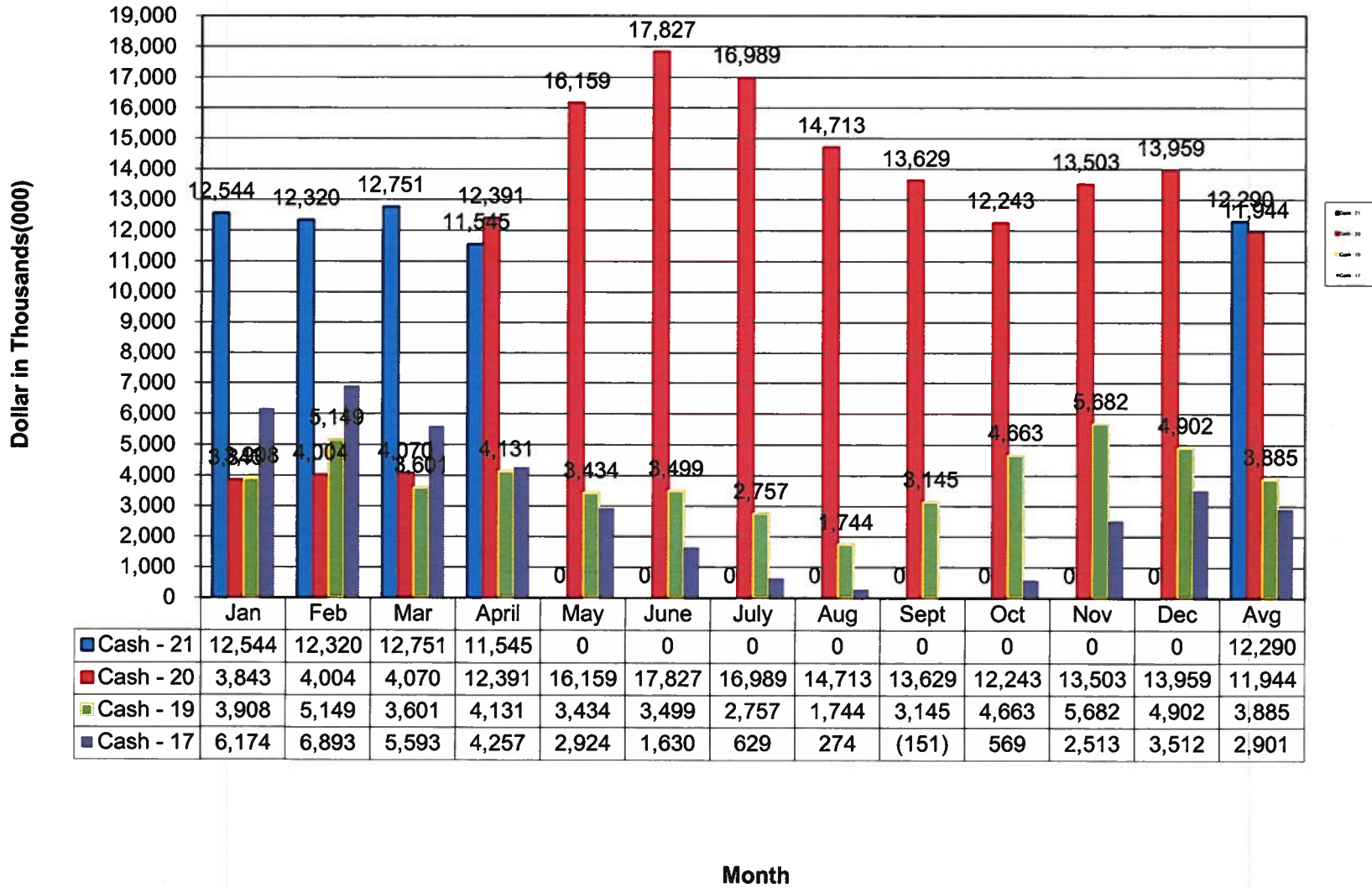
FTEs



	Jan	Feb	Mar	April	May	June	July	Aug	Sept	Oct	Nov	Dec	Avg
■ FTEs - 21	287	298	298	301	0	0	0	0	0	0	0	0	296
■ FTEs - 21 Bud	279	260	271	297	0	0	0	0	0	0	0	0	277
■ FTEs - 19	249	245	283	263	262	267	265	272	273	279	310	276	270
■ FTEs - 18	223	264	241	253	251	259	262	224	268	260	273	261	253
■ FTEs - 17	227	232	230	248	268	254	264	253	261	230	265	253	249

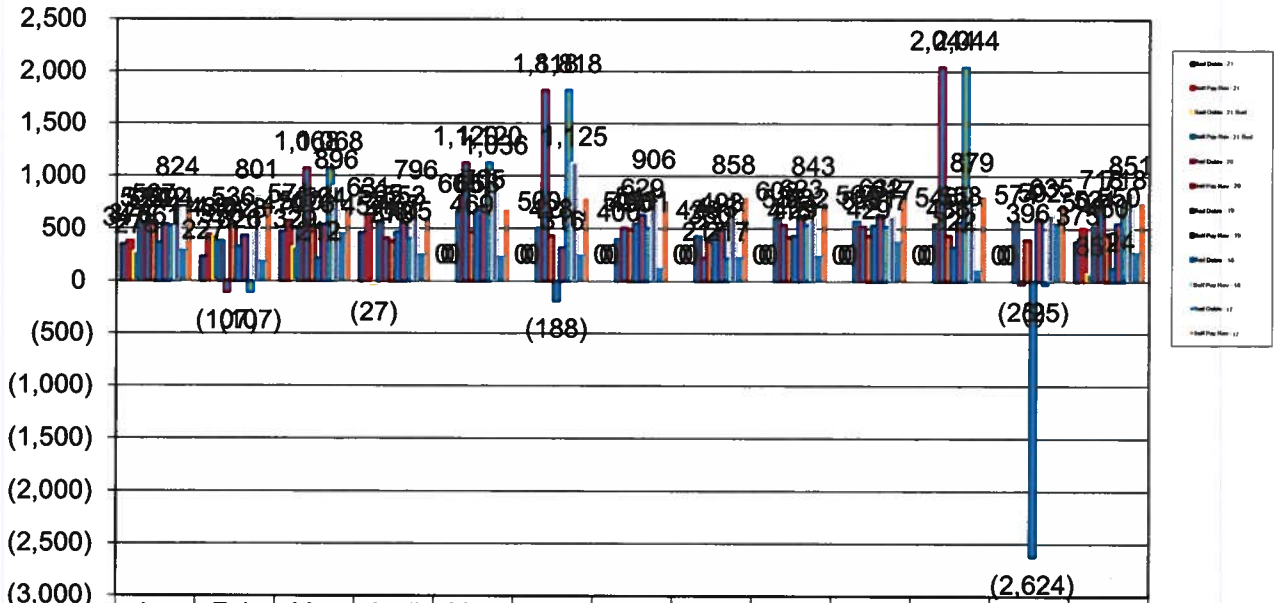
Month

Cogdell Memorial Hospital - Cash



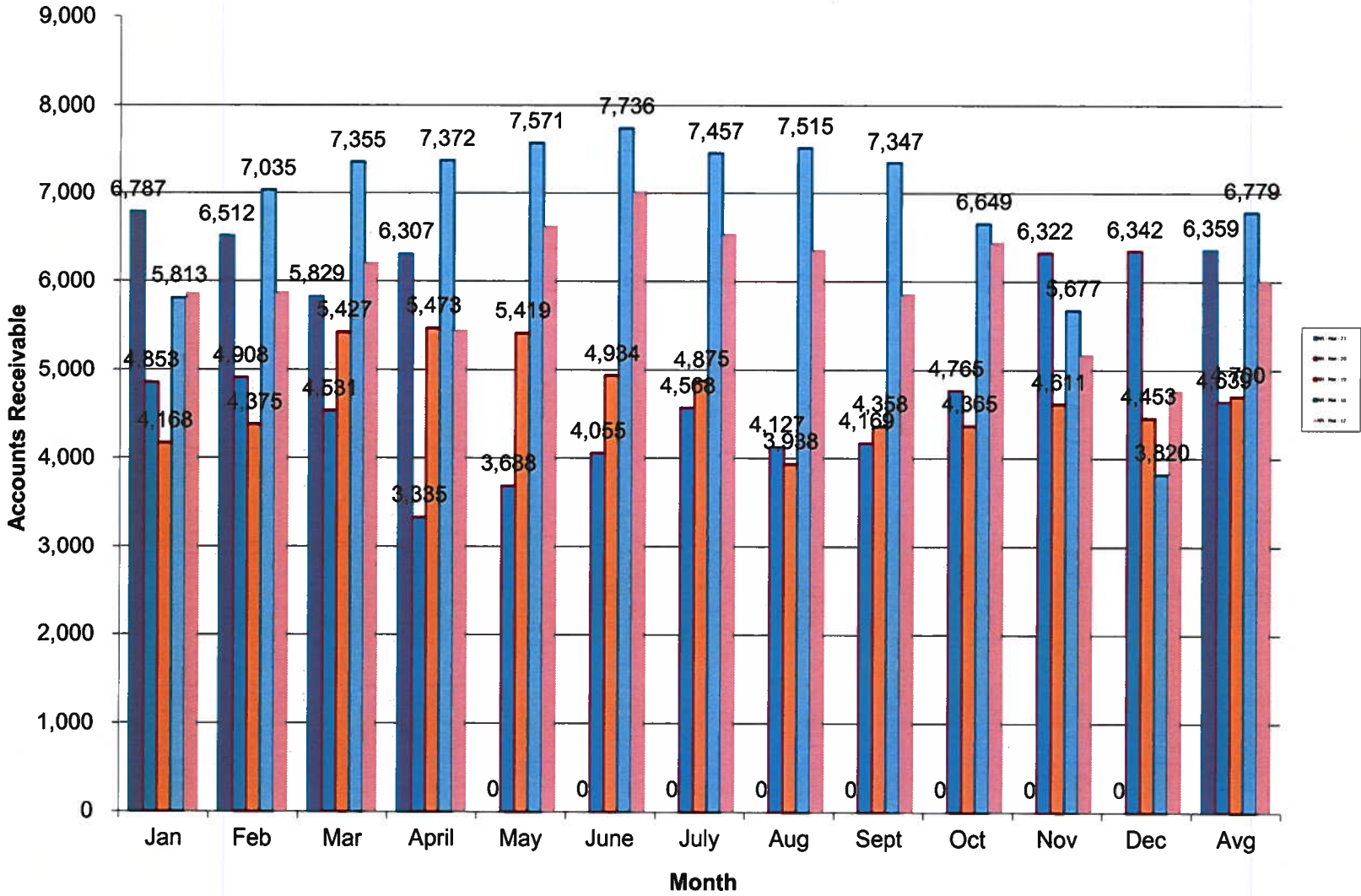
Cogdell Memorial Hospital - Self Pay Rev & Bad Debts

Dollars in Thousands(000)



	Jan	Feb	Mar	April	May	June	July	Aug	Sept	Oct	Nov	Dec	Avg
Bad Debts - 21	347	227	470	457	0	0	0	0	0	0	0	0	375
Self Pay Rev - 21	376	437	571	631	0	0	0	0	0	0	0	0	504
Bad Debts - 21 Bud	278	440	329	(27)	0	0	0	0	0	0	0	0	85
Self Pay Rev - 21 Bud	532	376	500	565	665	500	400	425	603	567	546	574	521
Bad Debts - 20	524	(107)	1,068	405	1,120	1,818	501	217	532	517	2,044	(25)	718
Self Pay Rev - 20	567	536	476	378	469	428	490	380	416	429	436	396	450
Bad Debts - 19	361	326	212	467	668	(188)	544	443	429	531	322	(2,624)	124
Self Pay Rev - 19	532	428	534	553	705	316	629	493	623	632	558	592	550
Bad Debts - 18	524	(107)	1,068	405	1,120	1,818	501	217	532	517	2,044	(25)	718
Self Pay Rev - 18	824	801	896	796	1,036	1,125	906	858	843	617	879	635	851
Bad Debts - 17	298	193	458	258	238	252	131	229	245	380	108	553	279
Self Pay Rev - 17	795	745	698	608	678	787	763	795	747	795	806	735	746

Cogdell Memorial Hospital - Accounts Receivable



Cogdell Memorial Hospital Cash Collections

