

**SCURRY COUNTY HOSPITAL DISTRICT
GOVERNING BOARD MEETING AGENDA**

Tuesday, July 31, 2018 | 8:30 am

Hospital Administrative Board Room, 1700 Cogdell Blvd., Snyder, Texas

MISSION	VISION
<i>To provide compassionate, high quality healthcare to the patients we serve and to improve healthcare and healing within our community.</i>	<i>To be the Regional Healthcare System of choice for patients, physicians and employees.</i>

The purpose of this meeting is to discuss and, as necessary, act on the agenda items enumerated below.

I. Introduction

A. Call to Order	Russell Riggan	
B. Invocation		
C. Announcements/Public Comment	Russell Riggan	Receive

II. Meeting Minutes

June 27, 2018	Russell Riggan	Review > Approve
---------------	----------------	------------------

II. Old Business

III. New Business

A. Medical Staff - Monthly Update	<i>Dr. David Kerr</i>	
--	-----------------------	--

B. Fluvanna 2 Wind Energy - Amendment	<i>Max Drum</i>	<i>Review > Approve</i>
--	-----------------	----------------------------

C. Comanche Solar Farm LLC (Gold Coast Energy Partners, LLC)(Presentation)	<i>Gary Terrell</i>	<i>Receive</i>
---	---------------------	----------------

D. Reports (Other Committees/Meetings)		
---	--	--

1. Nursing Report - Monthly Update	<i>K. Goodwin, RN</i>	<i>Inform</i>
---	-----------------------	---------------

2. Quality Management	<i>K. Hanley, RN</i>	<i>Inform</i>
------------------------------	----------------------	---------------

- a. Quality, Risk & Regulatory Update
- b. Committee Reports

E. Presentation of Audit	<i>J. Everett, CFO</i>	<i>Review > Approve</i>
---------------------------------	------------------------	----------------------------

F. Review Annual Proposed Budget		<i>Review</i>
---	--	---------------

G. Proposed Tax Rate		<i>Review</i>
-----------------------------	--	---------------

H. Elect Officers		<i>Action Requested</i>
--------------------------	--	-------------------------

I. Other Reports		<i>Action Requested</i>
-------------------------	--	-------------------------

1. Finance Report - Financial Report	<i>J. Everett, CFO</i>	<i>Receive/Review</i>
---	------------------------	-----------------------

2. Administration	<i>E. Helms, CEO</i>	
--------------------------	----------------------	--

- a. Monthly Update Inform
- b. Tax Abatement - Spectra Solar, LLC Removed - Inform Board

J. Policy and Procedures		
---------------------------------	--	--

1. Lab Manual - 497 Policy & Procedures		
--	--	--

- 12 Ancillary Lab Procedures
- 64 Blood Bank Procedures
- 4 Breath Alcohol Procedures
- 7 Cerner procedures
- 136 Chemistry Procedures
- 9 Coagulation Procedures
- 2 Education Procedures/ Items

- 4 Glucose Inform II Meter Procedures
- 35 Hematology Procedures
- 1 Incident Management Plan Procedure
- 102 Laboratory Administration Manual Procedures
- 27 Laboratory Information System Procedures and processes
- 56 Microbiology Procedures
- 7 Performance Improvement and Quality Systems Procedures and Processes
- 13 Serology Procedures
- 18 Urine and Parasitology Manual Procedures

2. <i>Anesthesia (see attached)</i>
3. <i>Dietary Manual (no changes)</i>
4. <i>Physical Environment (no changes)</i>
5. <i>Rehab Manual (no changes)</i>
6. <i>Board of Directors By-Laws (see attached)</i>
7. <i>Staffing Management (no changes)</i>
8. <i>Contracts and other written agreements for service (see attached)</i>
K. Announcements

IV. Executive Session Russell Riggan

- A. Board to convene in executive session pursuant to:
 - 1 Section 551.071 Consultations with Attorney - Pending Litigation
 - 2 Section 551.074 of the Texas Health and Safety Code, Re Personnel Matters

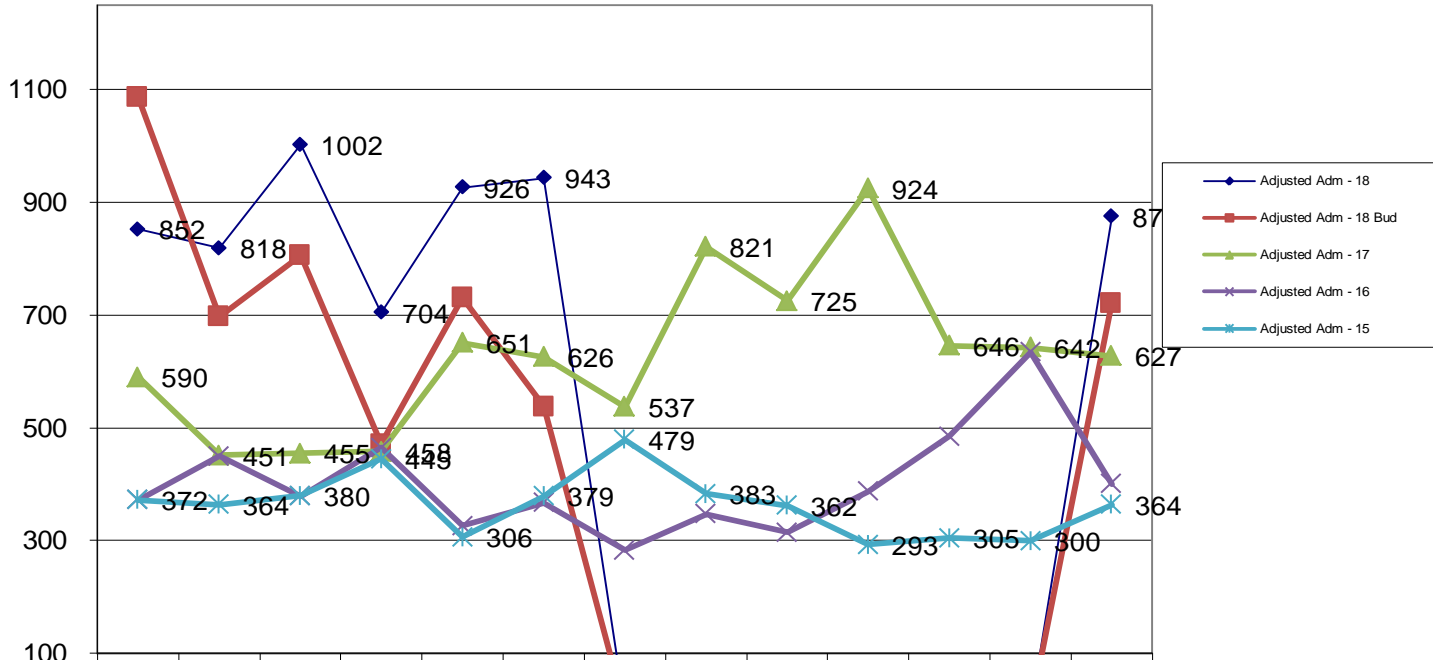
V. Board to convene in open session and take action if needed on matter discussed in Executive Session Russell Riggan

Next meeting scheduled for August 29, 2018

VII. Adjourn Russell Riggan

Cogdell Memorial Hospital - Adjusted Admissions

Adjusted Admissions - Excl Asst. Living

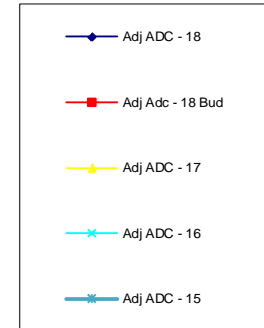
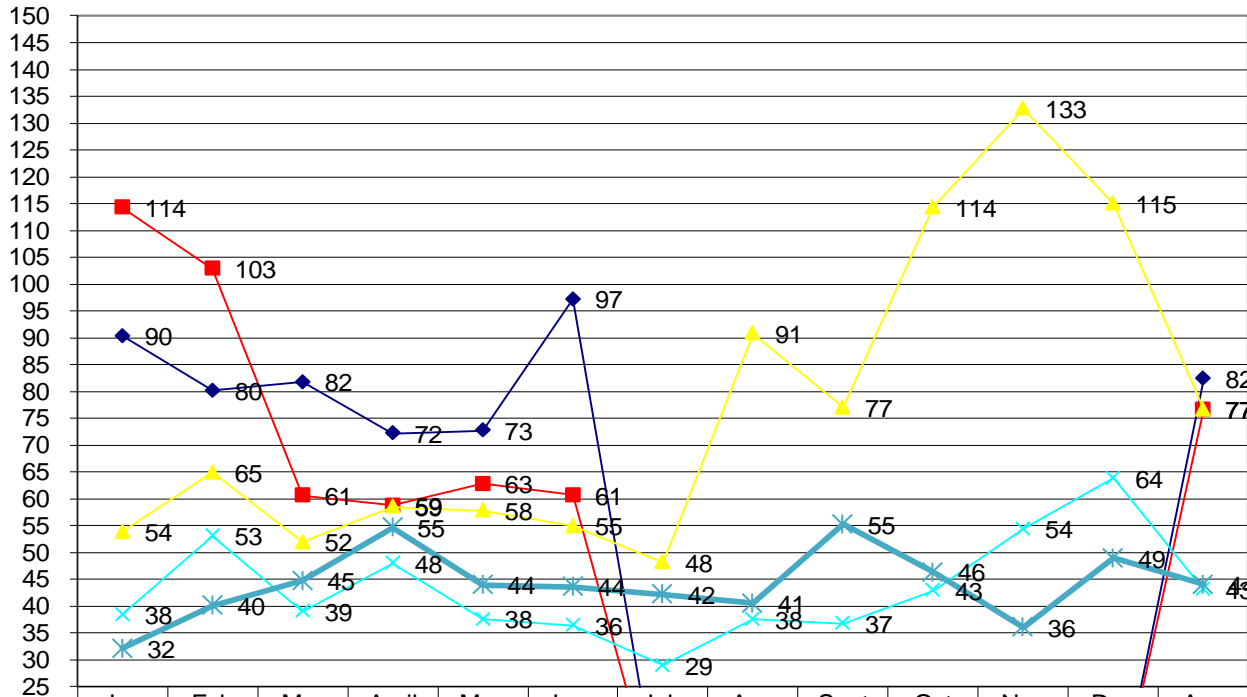


	Jan	Feb	Mar	April	May	June	July	Aug	Sep	Oct	Nov	Dec	Avg
Adjusted Adm - 18	852	818	1002	704	926	943	0	0	0	0	0	0	874
Adjusted Adm - 18 Bud	1086	697	806	471	731	538	0	0	0	0	0	0	722
Adjusted Adm - 17	590	451	455	458	651	626	537	821	725	924	646	642	627
Adjusted Adm - 16	372	450	379	465	326	367	283	347	315	387	485	634	401
Adjusted Adm - 15	372	364	380	445	306	379	479	383	362	293	305	300	364

Month

Cogdell Memorial Hospital - Adj. Average Daily Census

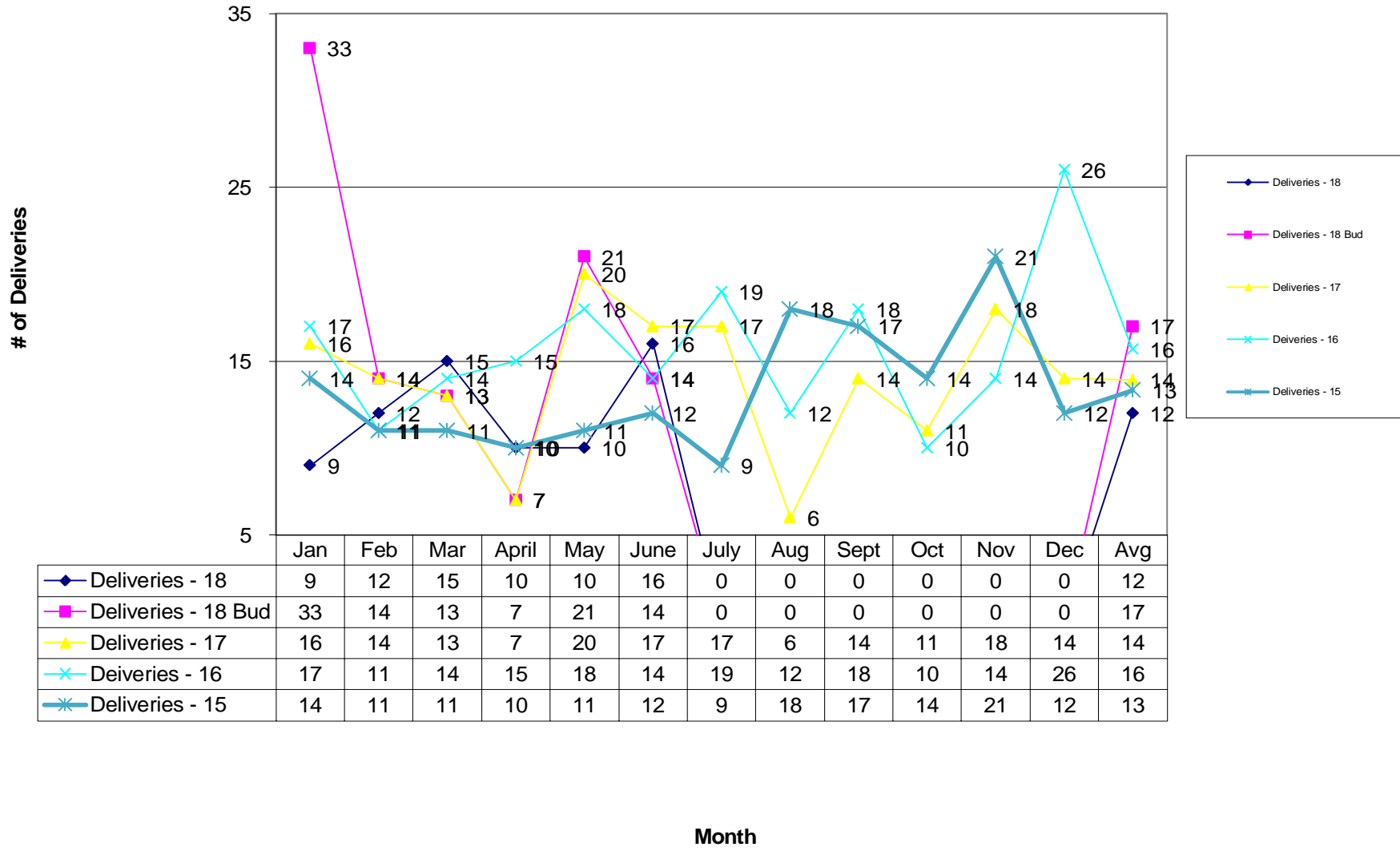
Average Daily Census - Excl. Asst. Living



	Jan	Feb	Mar	April	May	June	July	Aug	Sept	Oct	Nov	Dec	Avg
◆ Adj ADC - 18	90	80	82	72	73	97	0	0	0	0	0	0	82
■ Adj ADC - 18 Bud	114	103	61	59	63	61	0	0	0	0	0	0	77
▲ Adj ADC - 17	54	65	52	59	58	55	48	91	77	114	133	115	77
✕ Adj ADC - 16	38	53	39	48	38	36	29	38	37	43	54	64	43
✱ Adj ADC - 15	32	40	45	55	44	44	42	41	55	46	36	49	44

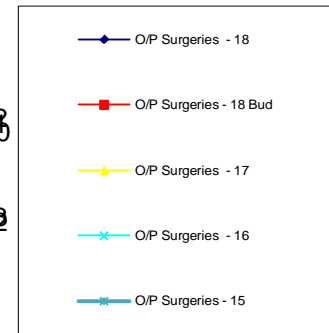
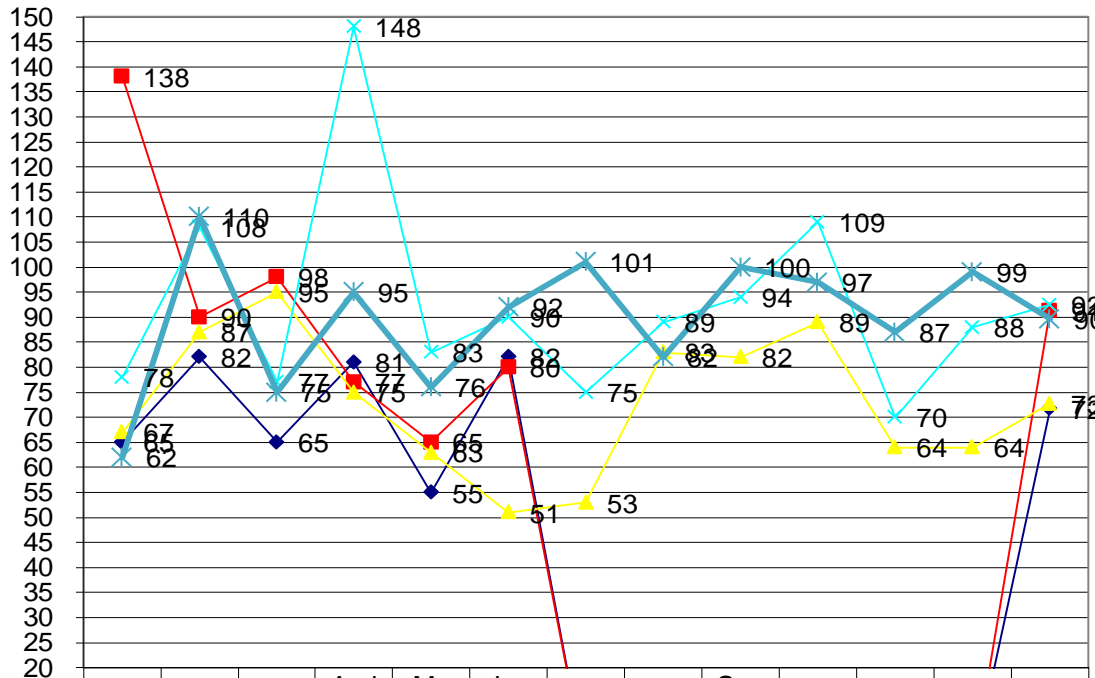
Month

Cogdell Memorial Hospital- Deliveries



Cogdell Memorial Hospital - Outpatient Surgeries

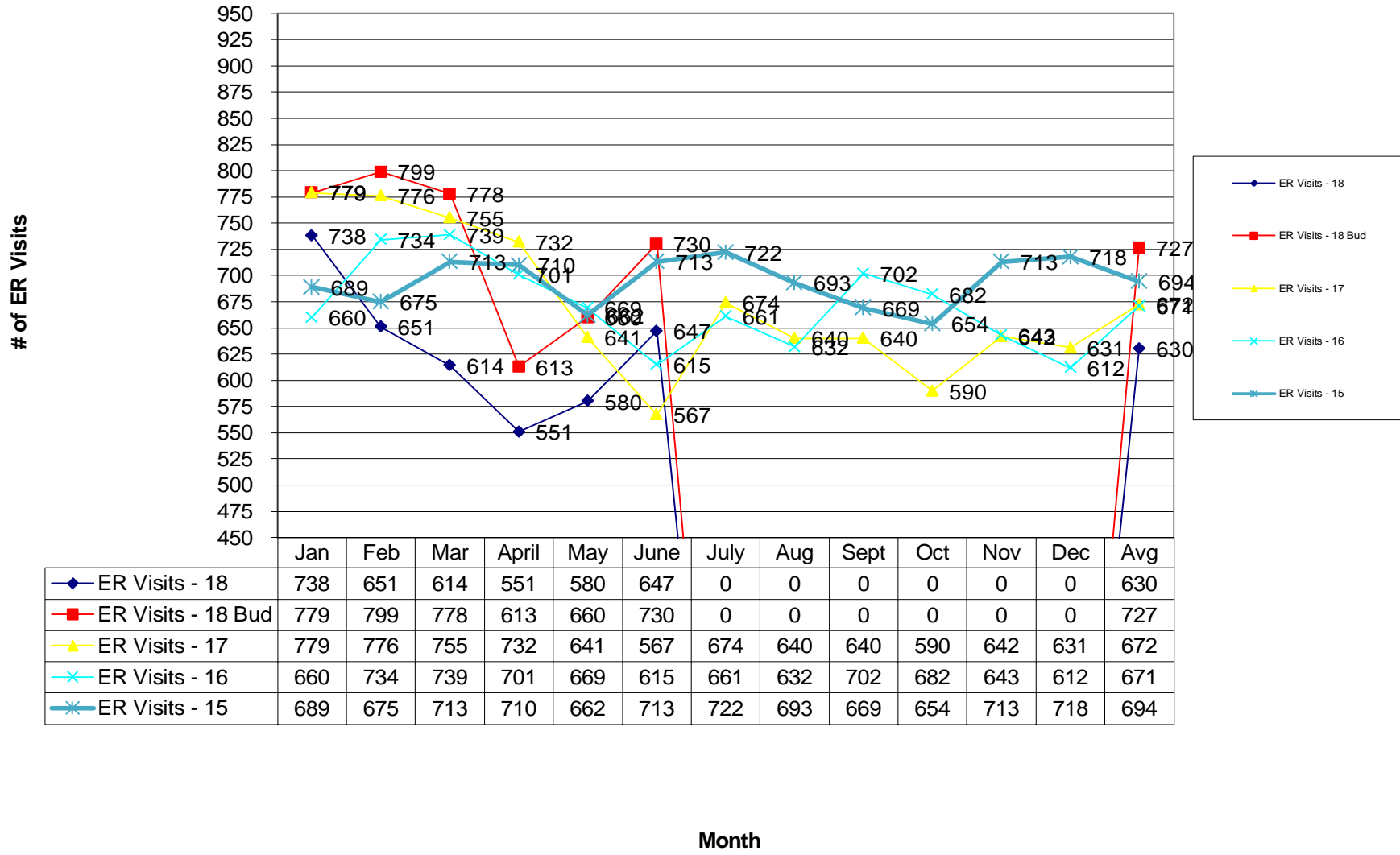
of Outpatient Surgeries



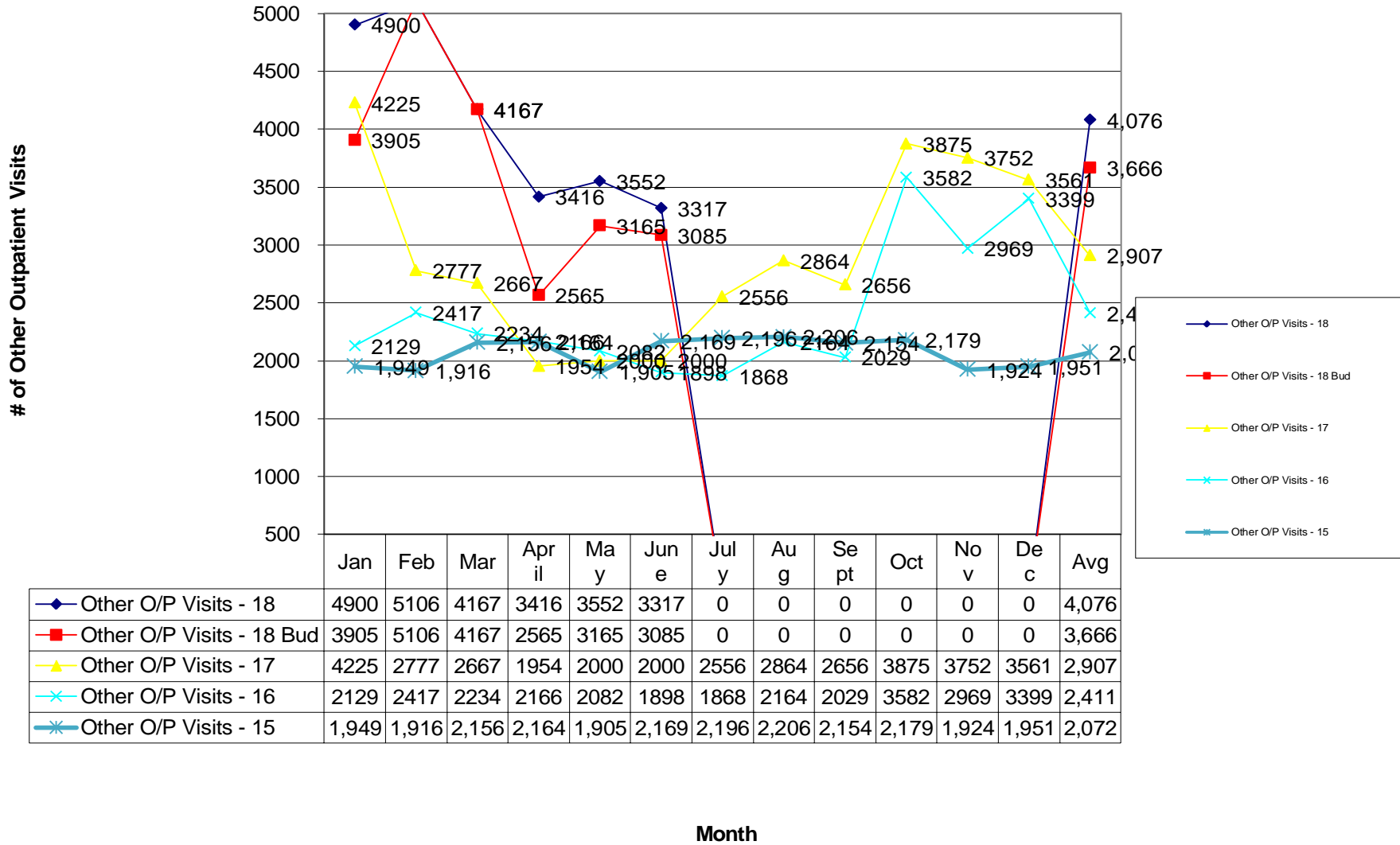
	Jan	Feb	Mar	April	May	June	July	Aug	Sept	Oct	Nov	Dec	Avg
◆ O/P Surgeries - 18	65	82	65	81	55	82	0	0	0	0	0	0	72
■ O/P Surgeries - 18 Bud	138	90	98	77	65	80	0	0	0	0	0	0	91
▲ O/P Surgeries - 17	67	87	95	75	63	51	53	83	82	89	64	64	73
✧ O/P Surgeries - 16	78	108	77	148	83	90	75	89	94	109	70	88	92
✧ O/P Surgeries - 15	62	110	75	95	76	92	101	82	100	97	87	99	90

Month

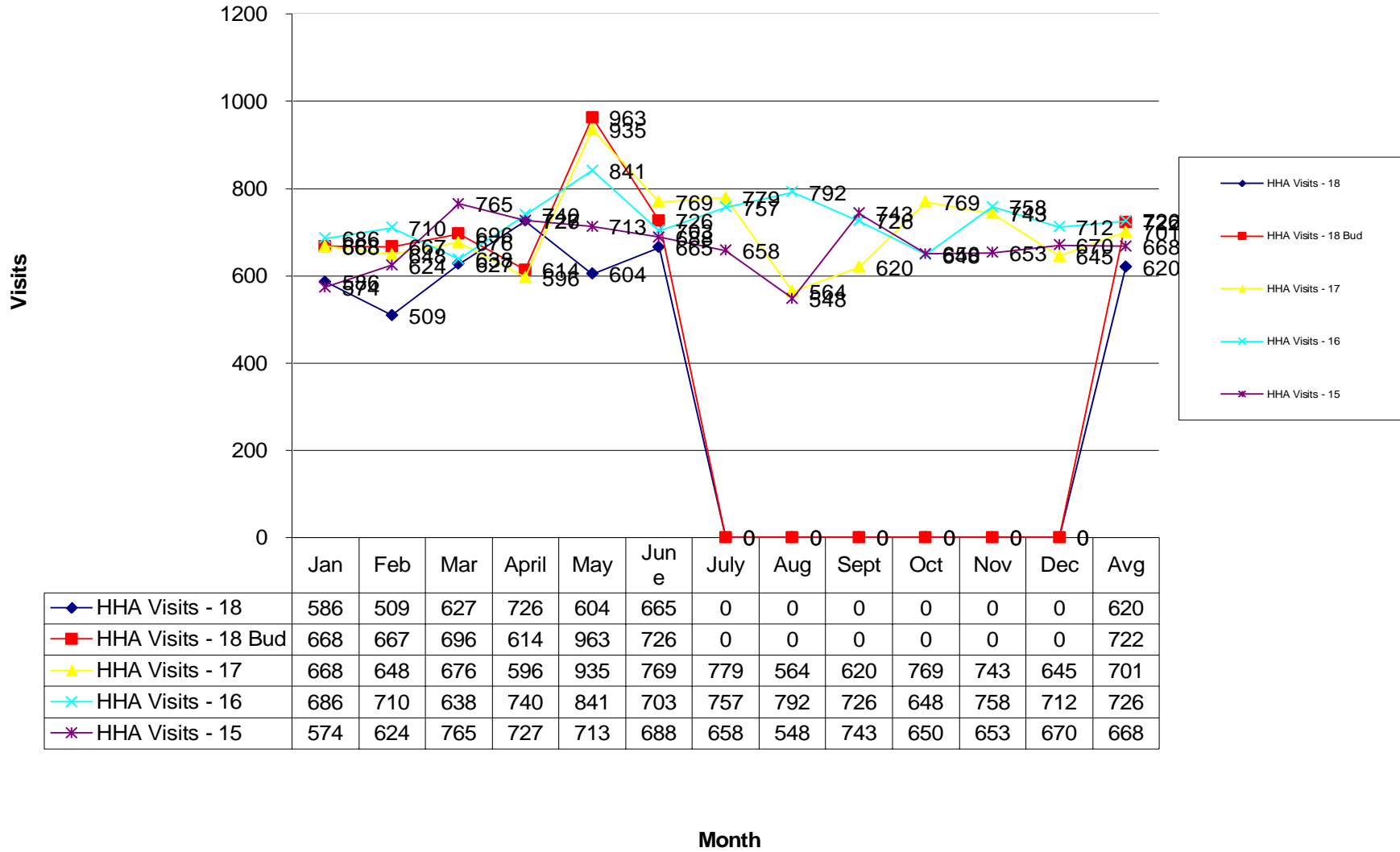
Cogdell Memorial Hospital - ER Visits



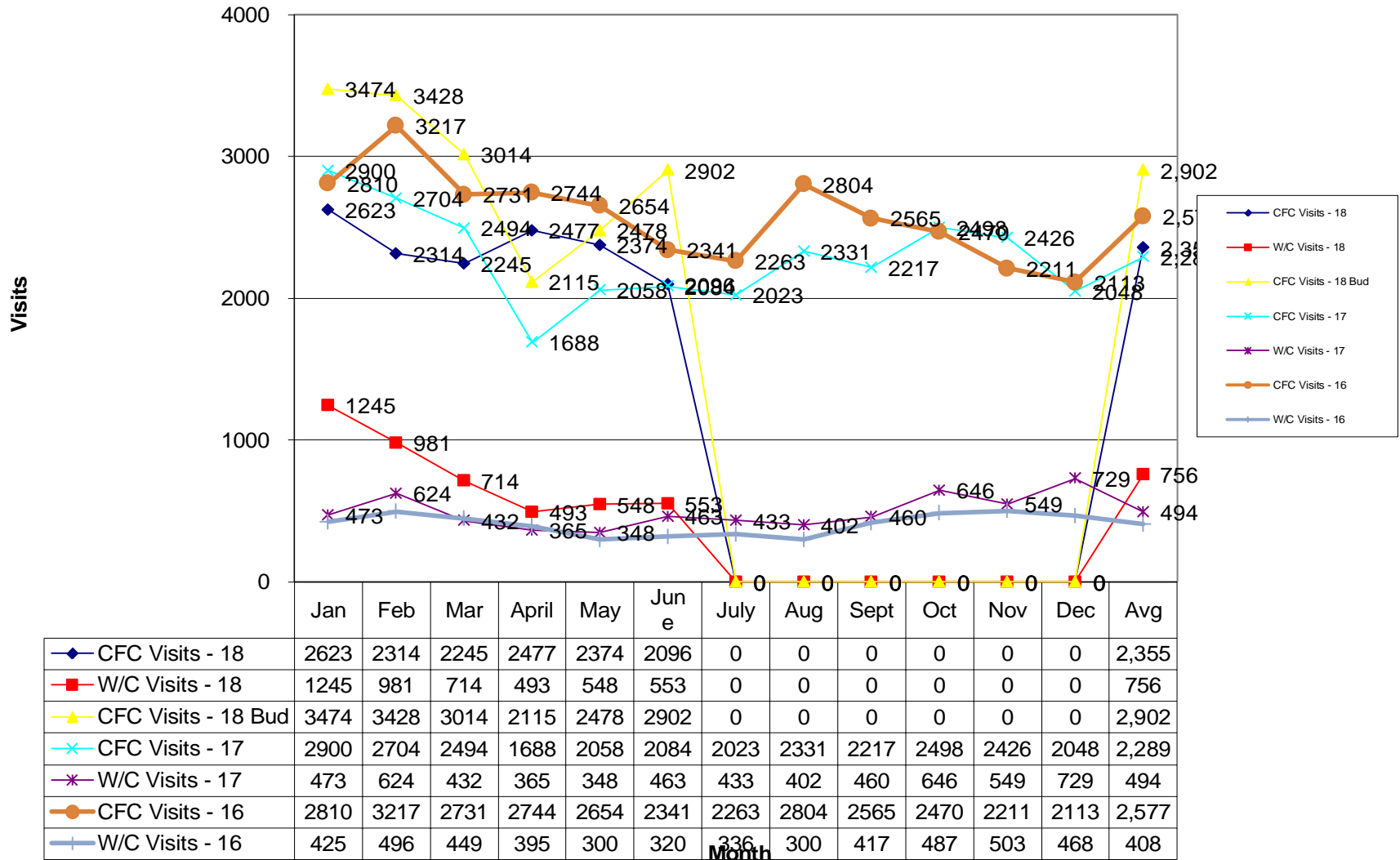
Cogdell Memorial Hospital - Other Outpatient Visits



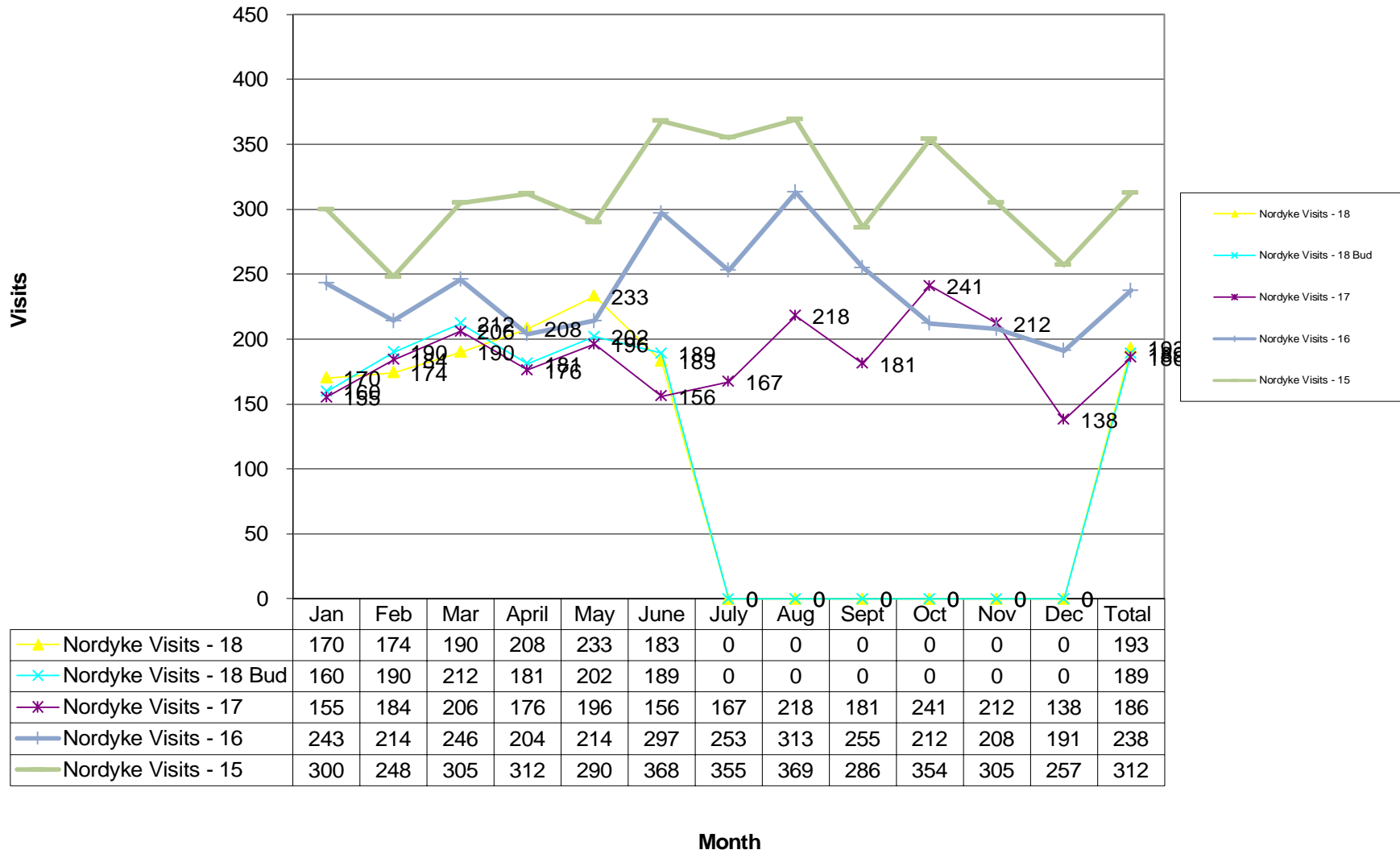
Cogdell Memorial Hospital - HHA Visits



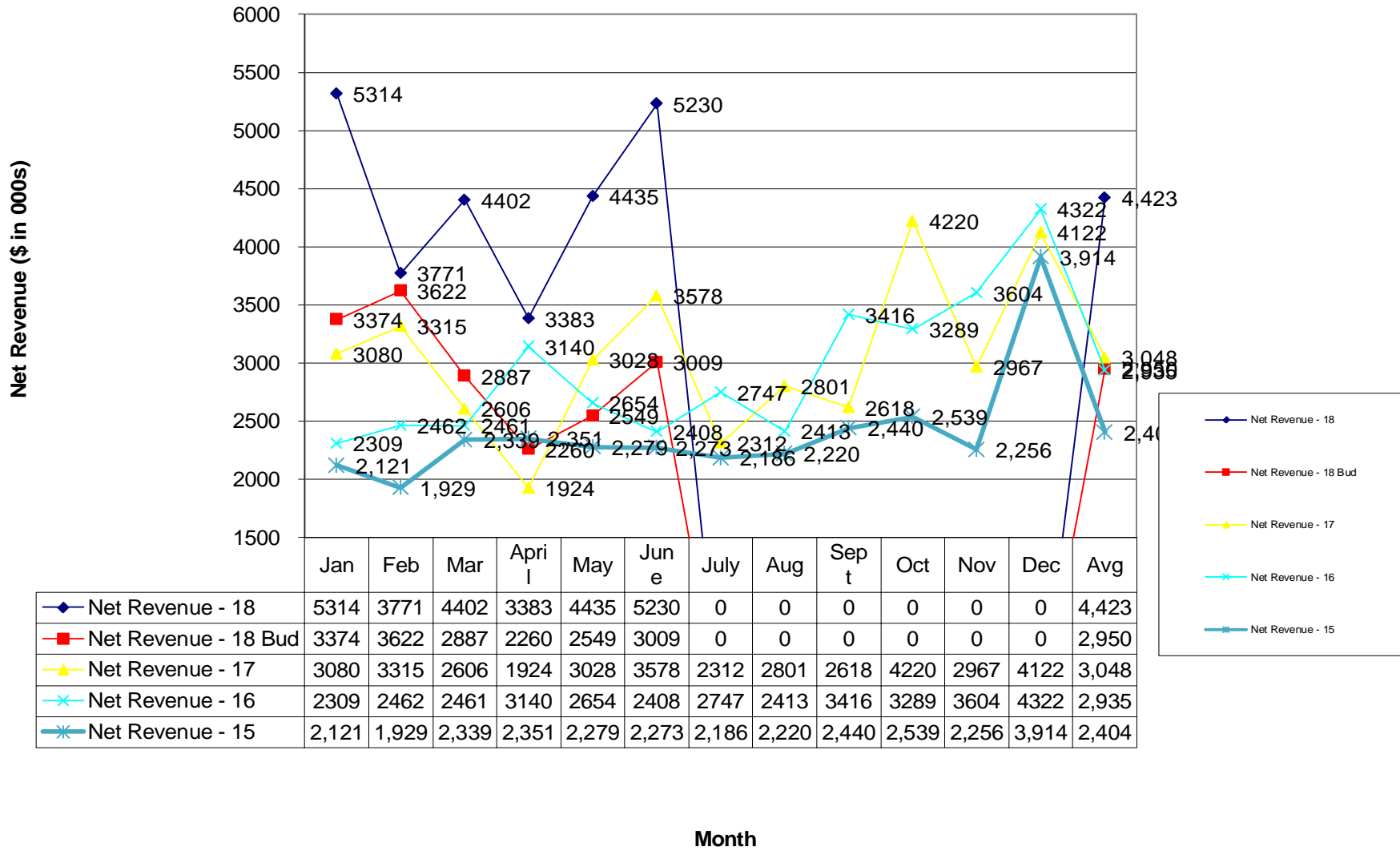
Cogdell Memorial Hospital - CFC Visits



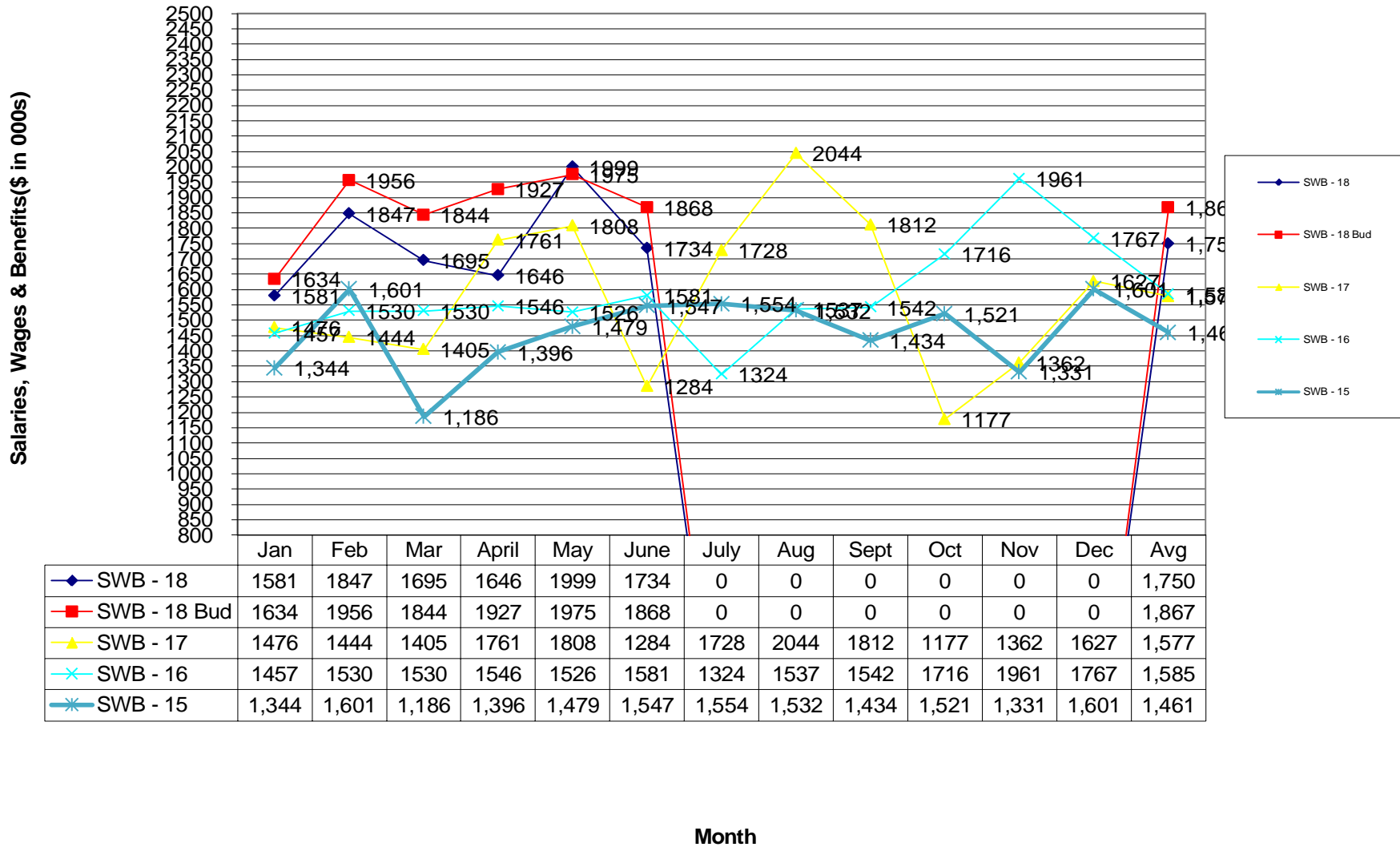
Cogdell Memorial Hospital - Ortho Visits



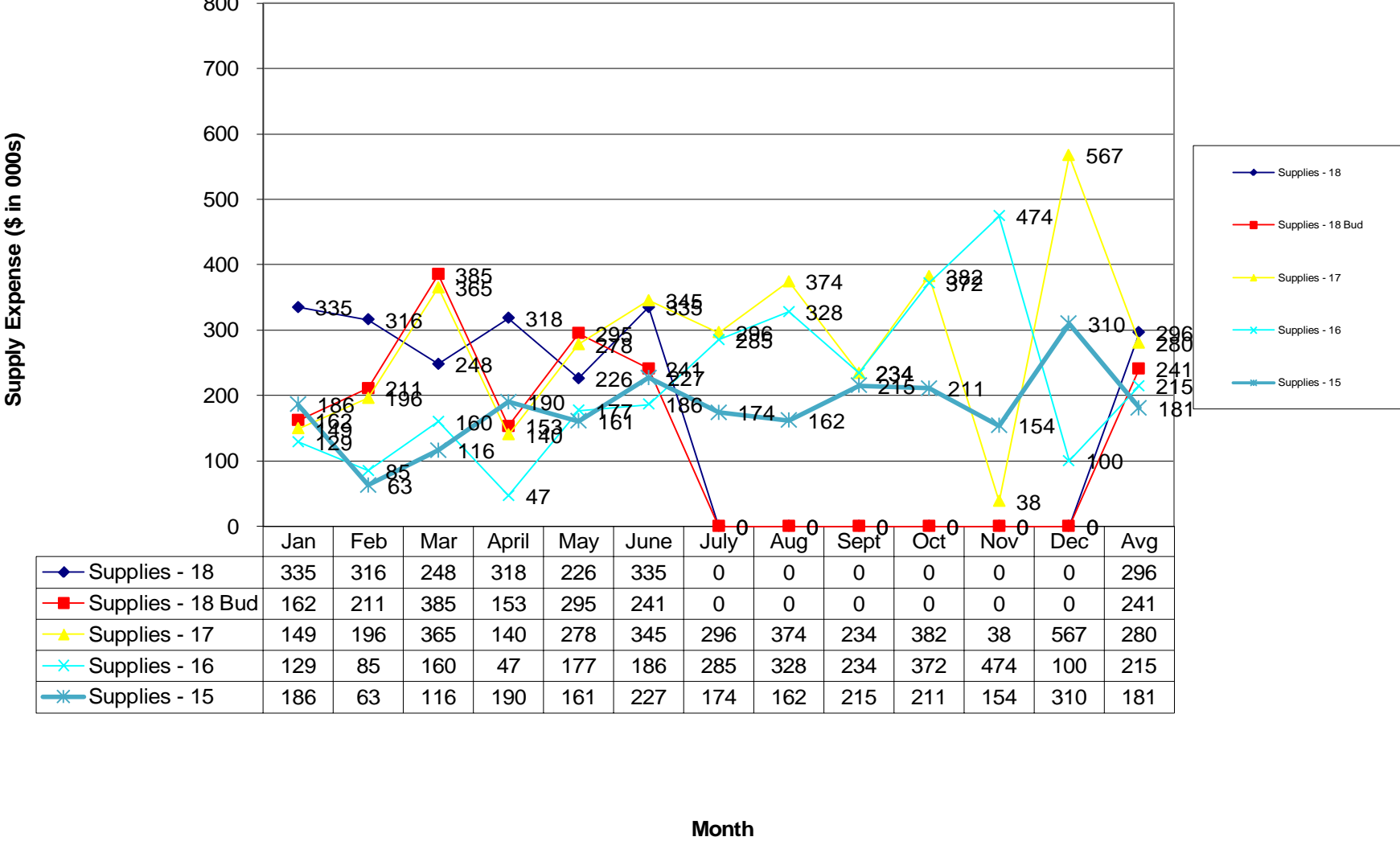
Cogdell Memorial Hospital - Net Revenue (\$ in 000s)

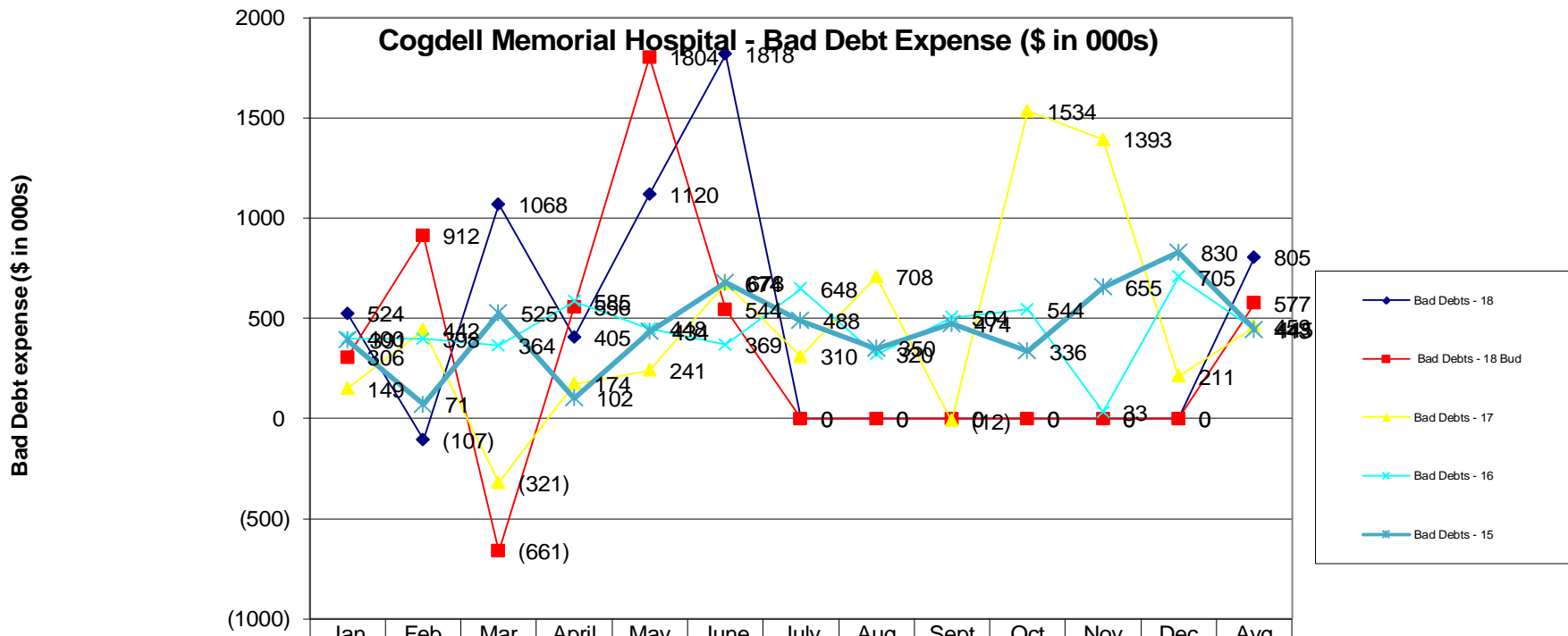


Cogdell Memorial Hospital - Salaries, Wages & Benefits (\$ in 000s)



Cogdell Memorial Hospital - Supply Expense (\$ in 000s)

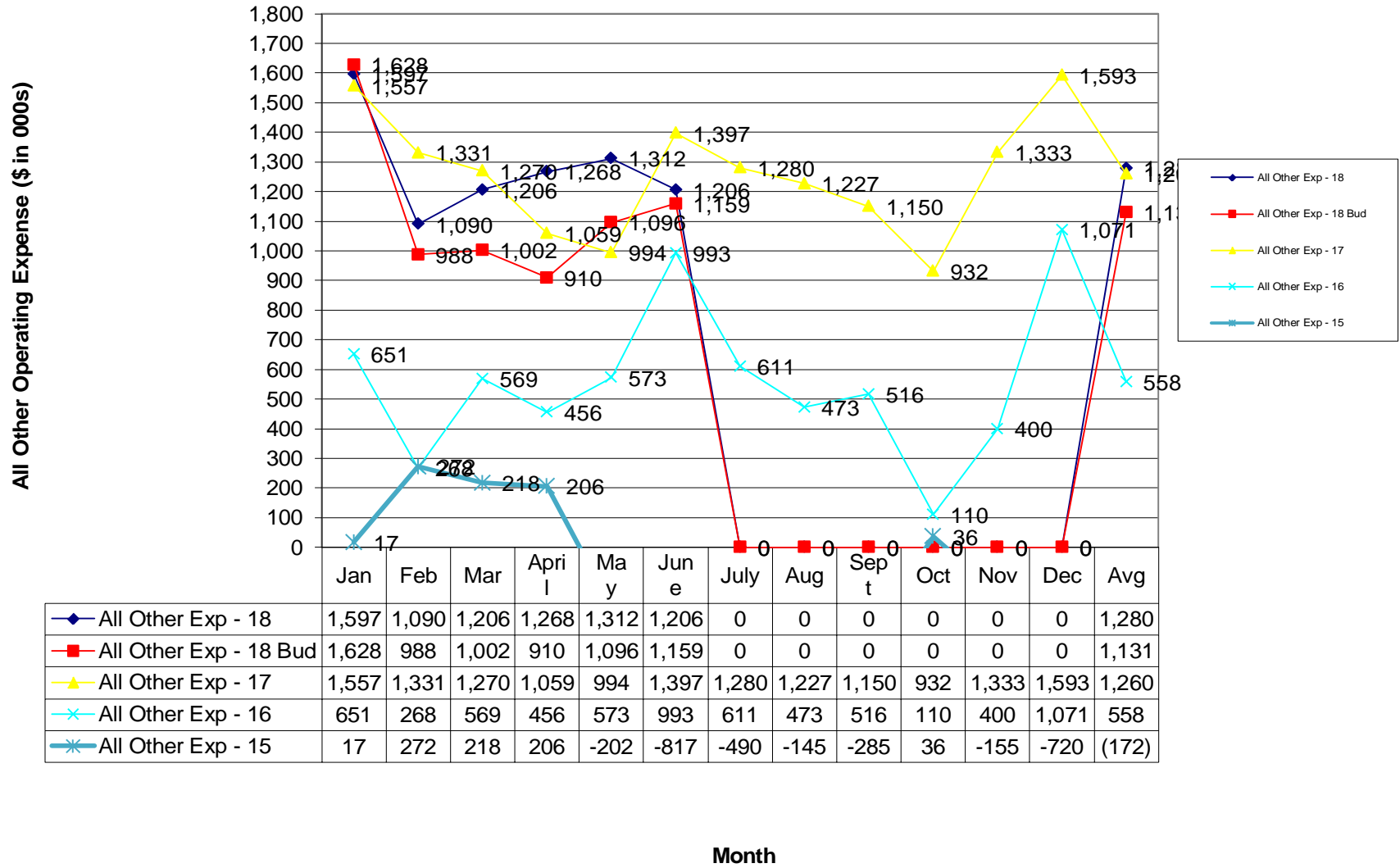




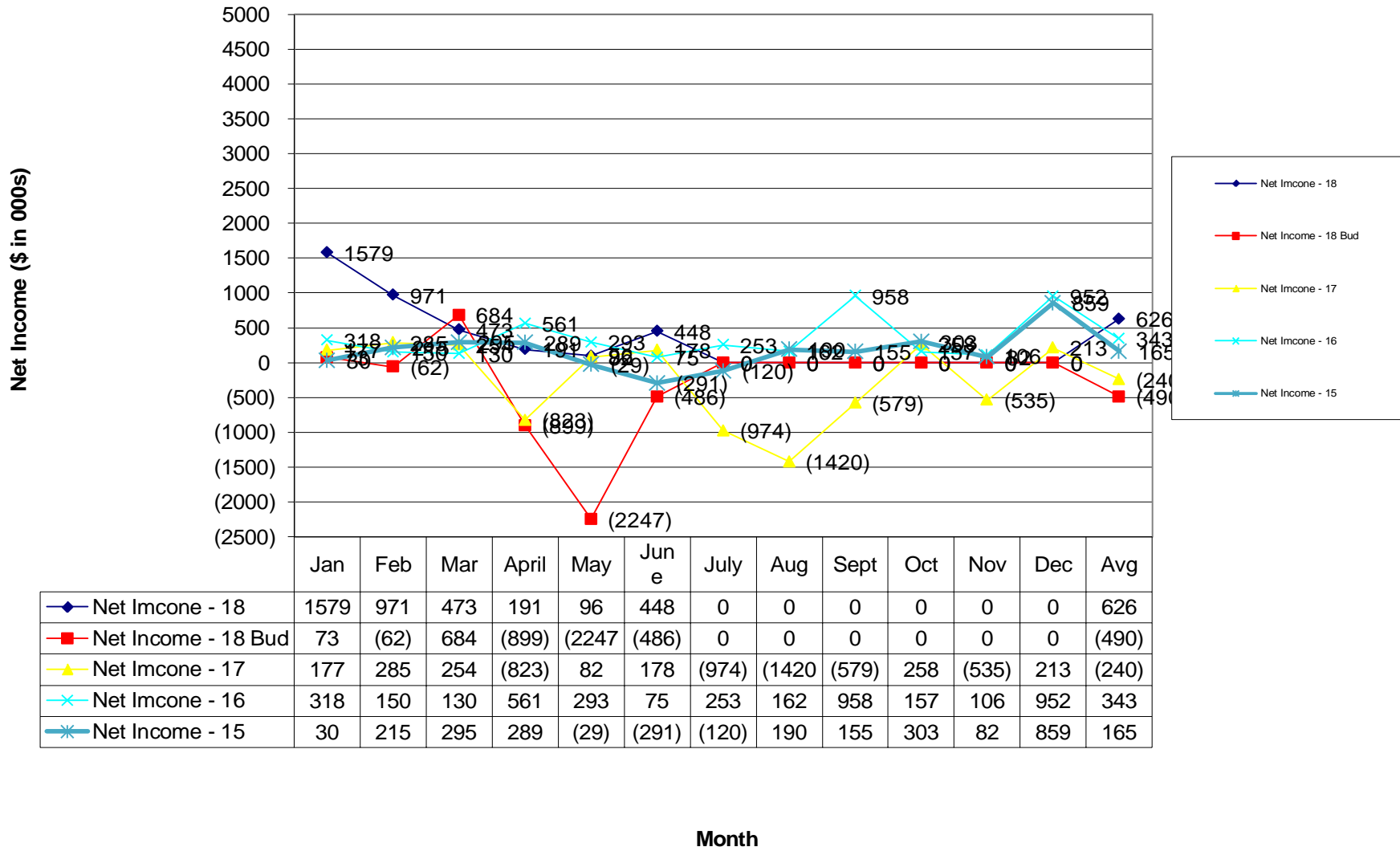
	Jan	Feb	Mar	April	May	June	July	Aug	Sept	Oct	Nov	Dec	Avg
◆ Bad Debts - 18	524	(107)	1068	405	1120	1818	0	0	0	0	0	0	805
■ Bad Debts - 18 Bud	306	912	(661)	556	1804	544	0	0	0	0	0	0	577
▲ Bad Debts - 17	149	442	(321)	174	241	674	310	708	(12)	1534	1393	211	459
✧ Bad Debts - 16	400	398	364	585	448	369	648	320	504	544	33	705	443
✱ Bad Debts - 15	391	71	525	102	434	678	488	350	474	336	655	830	445

Month

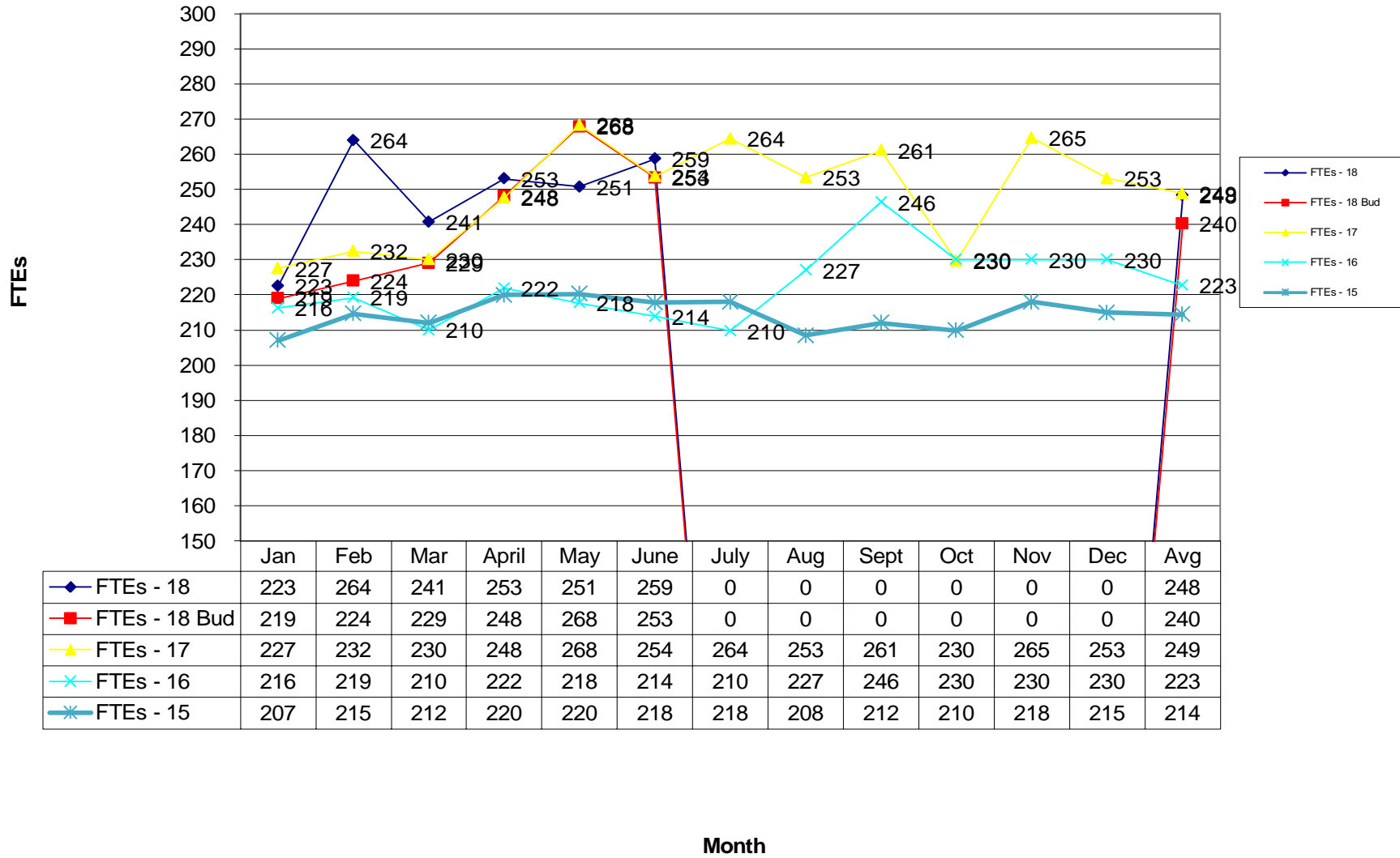
Cogdell Memorial Hospital - All Other Operating Expense (\$ in 000s)



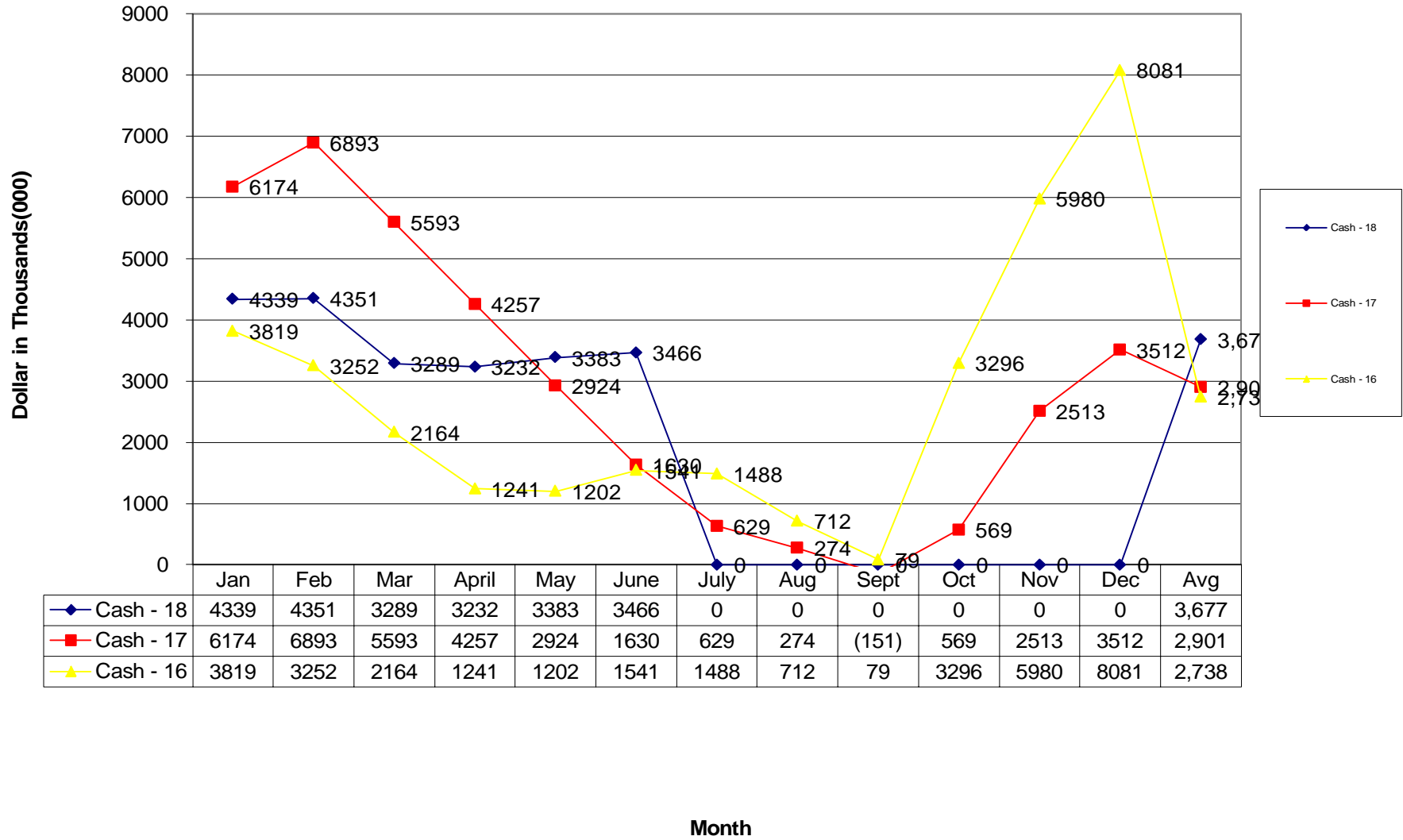
Cogdell Memorial Hospital - Net Income (\$ in 000s)



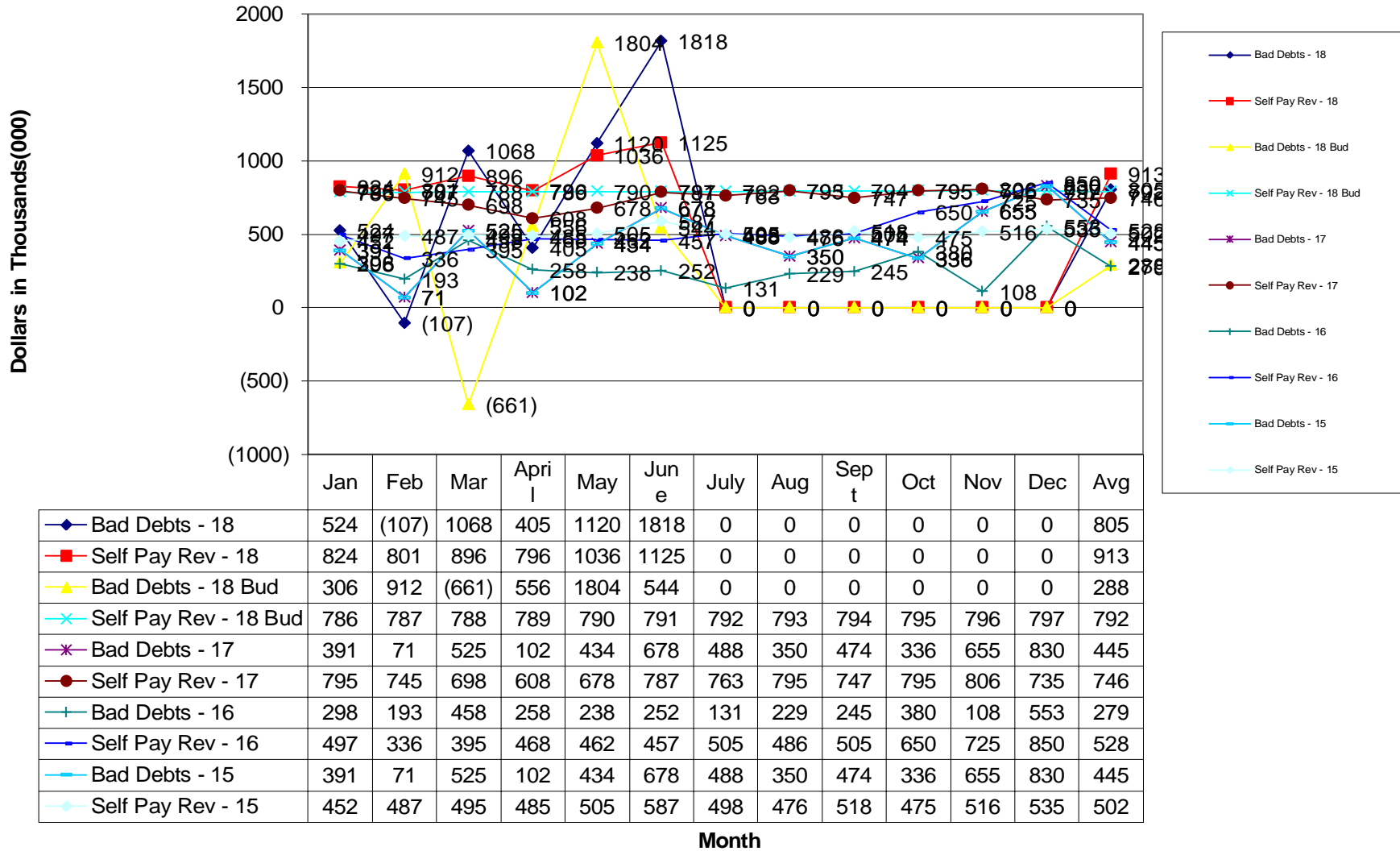
Cogdell Memorial Hospital - FTEs



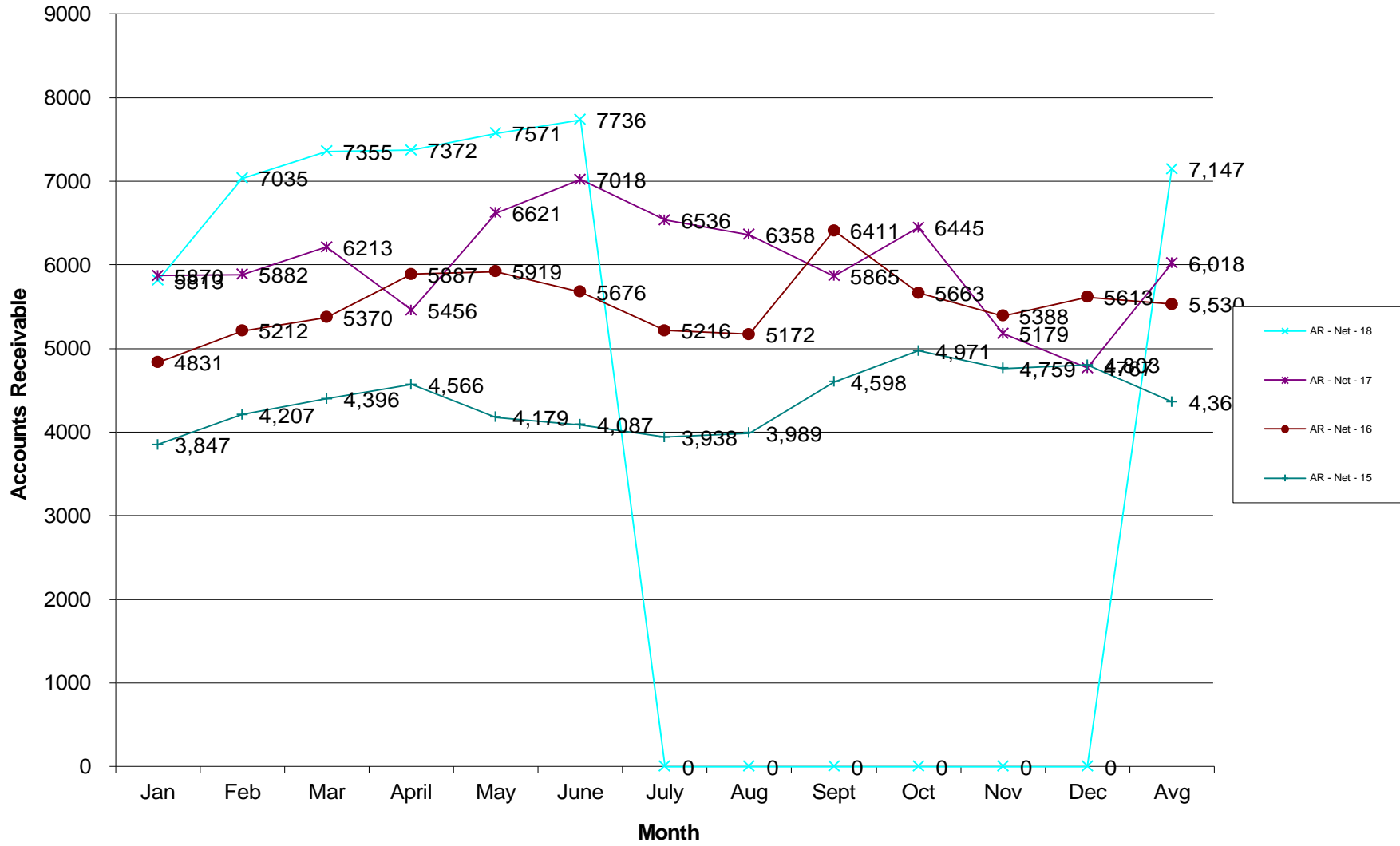
Cogdell Memorial Hospital - Cash



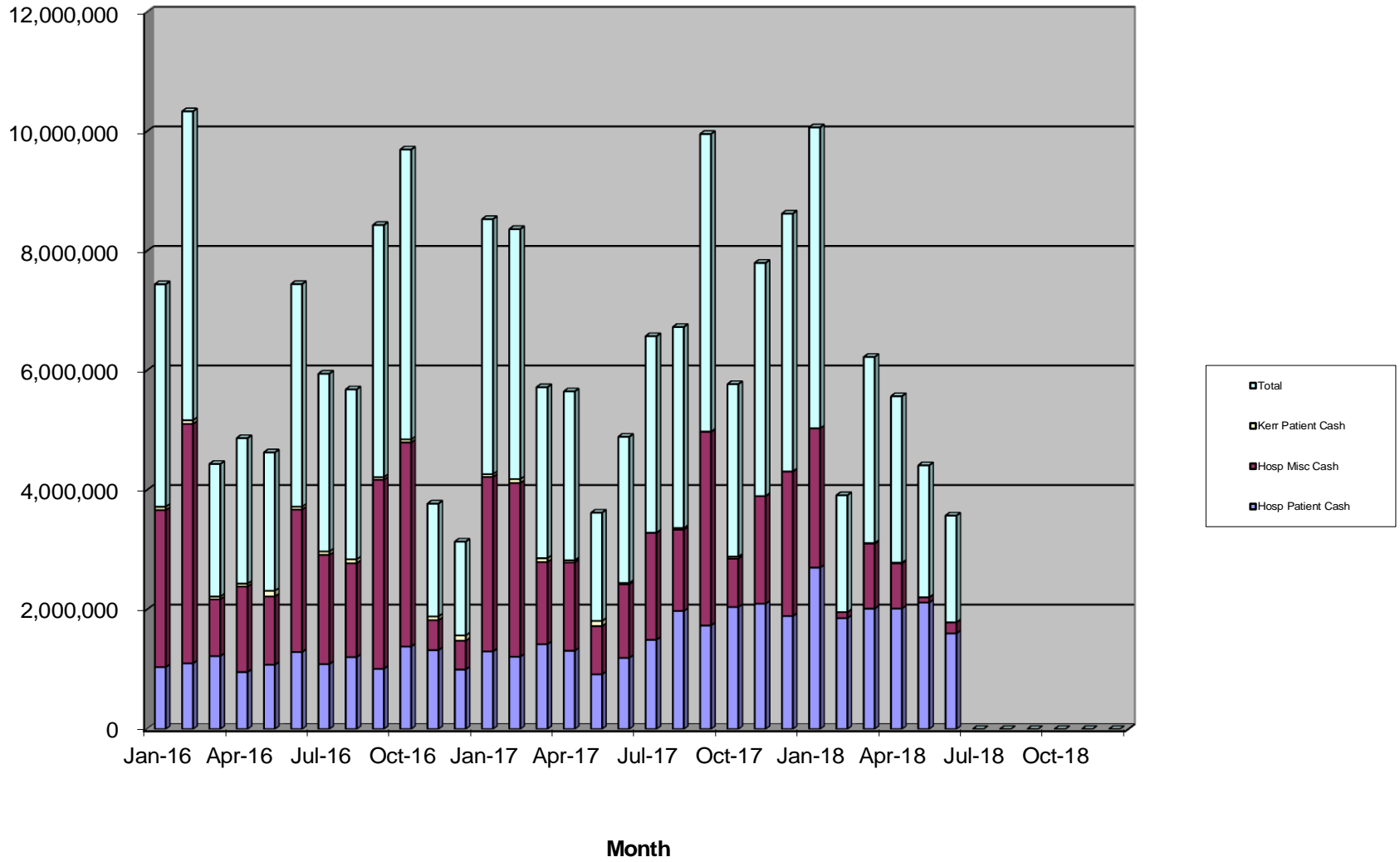
Cogdell Memorial Hospital - Self Pay Rev & Bad Debts



Cogdell Memorial Hospital - Accounts Receivable

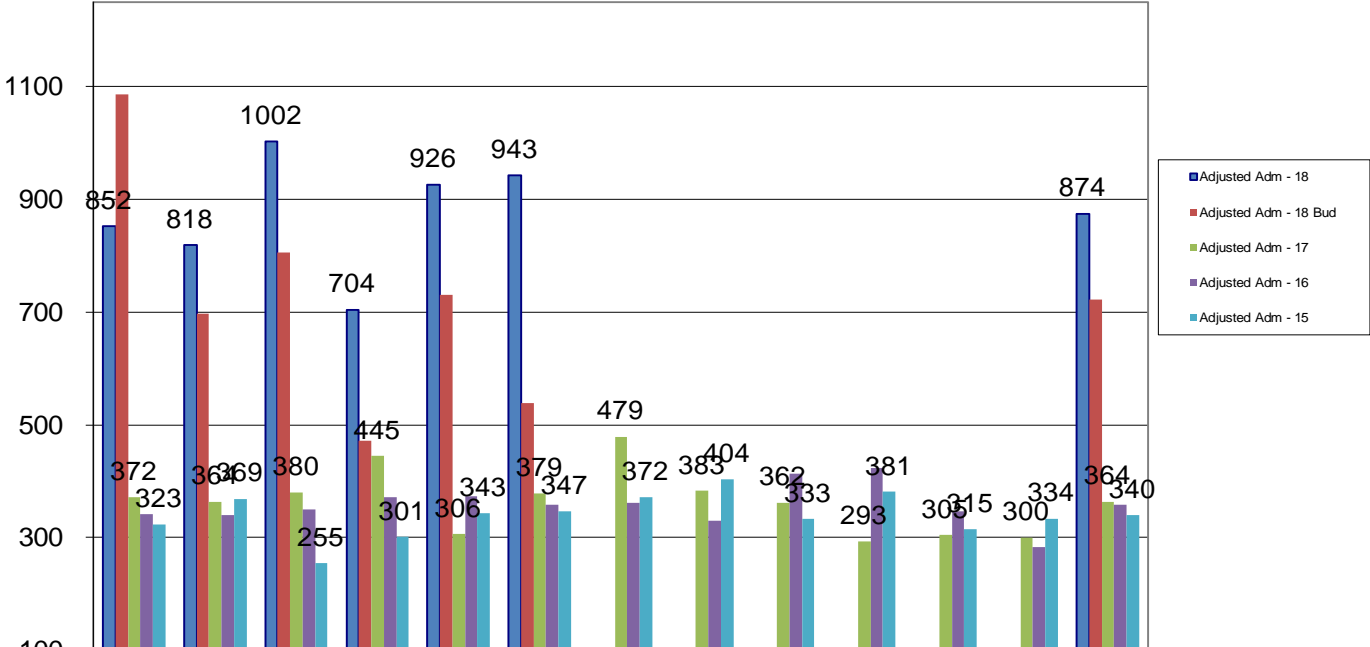


Cogdell Memorial Hospital Cash Collections



Cogdell Memorial Hospital - Adjusted Admissions

Adjusted Admissions - Excl Asst. Living

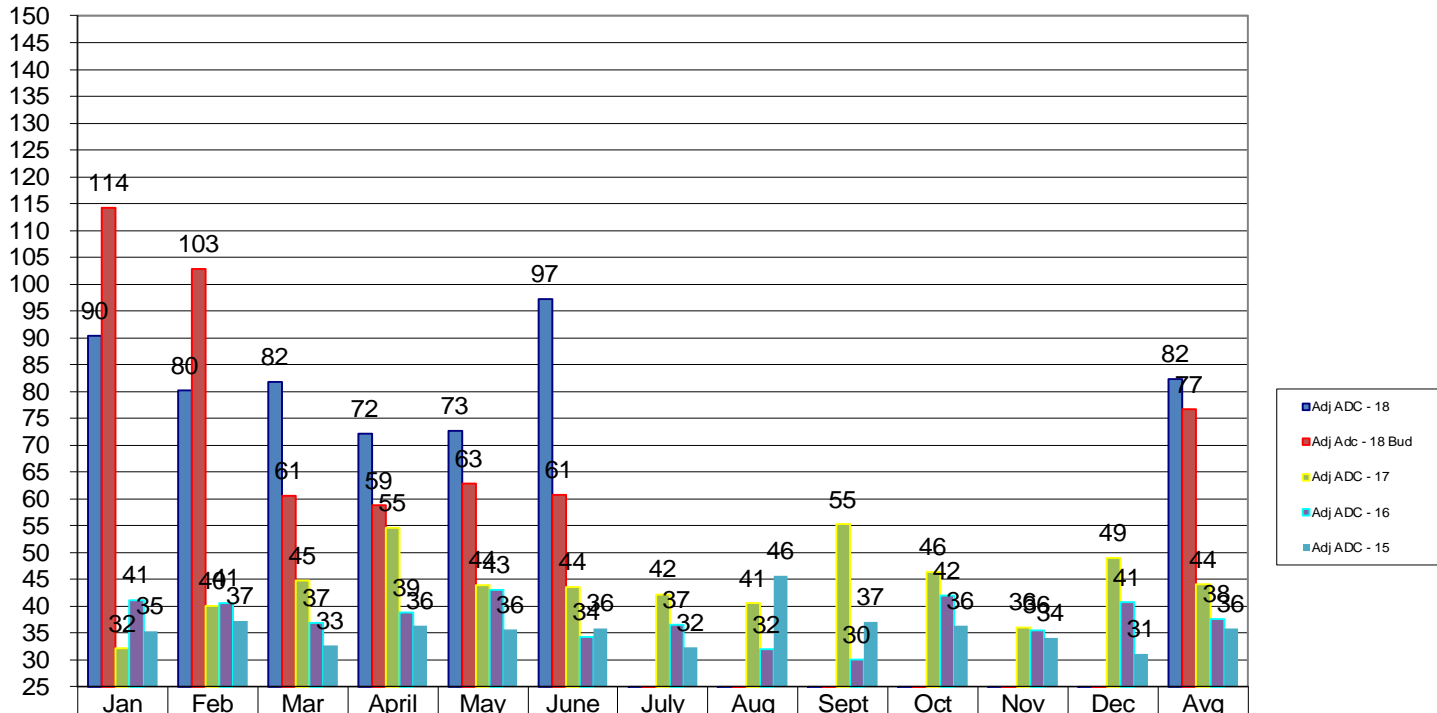


	Jan	Feb	Mar	April	May	Jun e	July	Aug	Sept	Oct	Nov	Dec	Avg
Adjusted Adm - 18	852	818	1002	704	926	943	0	0	0	0	0	0	874
Adjusted Adm - 18 Bud	1086	697	806	471	731	538	0	0	0	0	0	0	722
Adjusted Adm - 17	372	364	380	445	306	379	479	383	362	293	305	300	364
Adjusted Adm - 16	341	340	350	371	374	358	361	330	413	423	347	284	358
Adjusted Adm - 15	323	369	255	301	343	347	372	404	333	381	315	334	340

Month

Cogdell Memorial Hospital - Adj. Average Daily Census

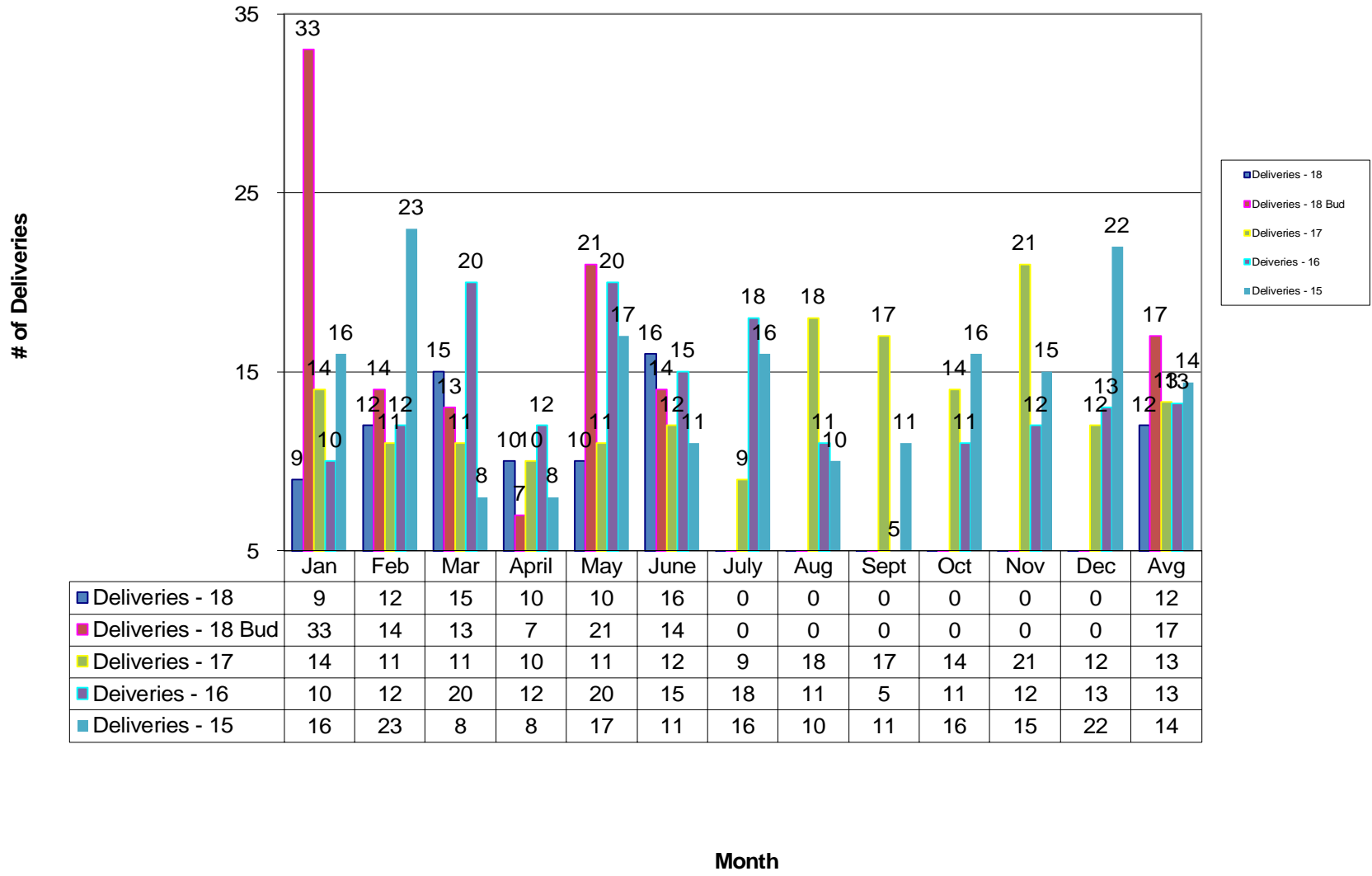
Average Daily Census - Excl. Asst. Living



	Jan	Feb	Mar	April	May	June	July	Aug	Sept	Oct	Nov	Dec	Avg
Adj. ADC - 18	90	80	82	72	73	97	0	0	0	0	0	0	82
Adj. ADC - 18 Bud	114	103	61	59	63	61	0	0	0	0	0	0	77
Adj. ADC - 17	32	40	45	55	44	44	42	41	55	46	36	49	44
Adj. ADC - 16	41	41	37	39	43	34	37	32	30	42	36	41	38
Adj. ADC - 15	35	37	33	36	36	36	32	46	37	36	34	31	36

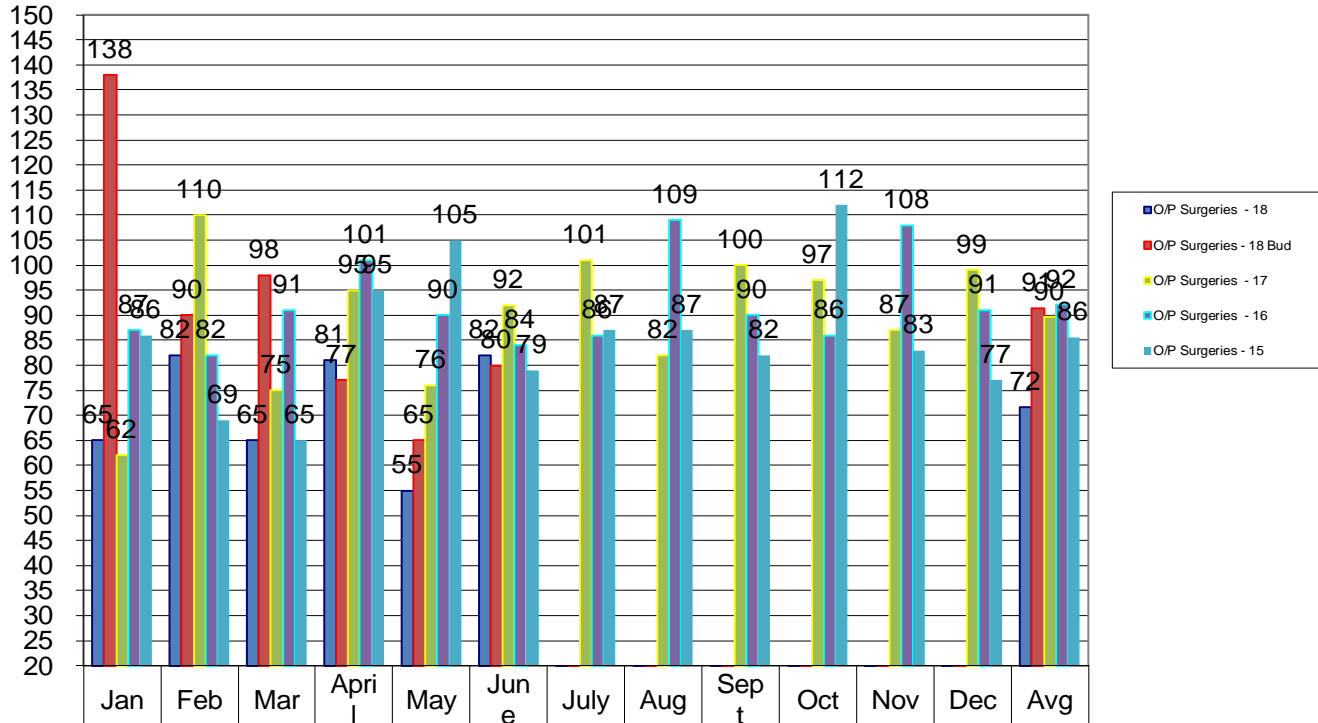
Month

Cogdell Memorial Hospital- Deliveries



Cogdell Memorial Hospital - Outpatient Surgeries

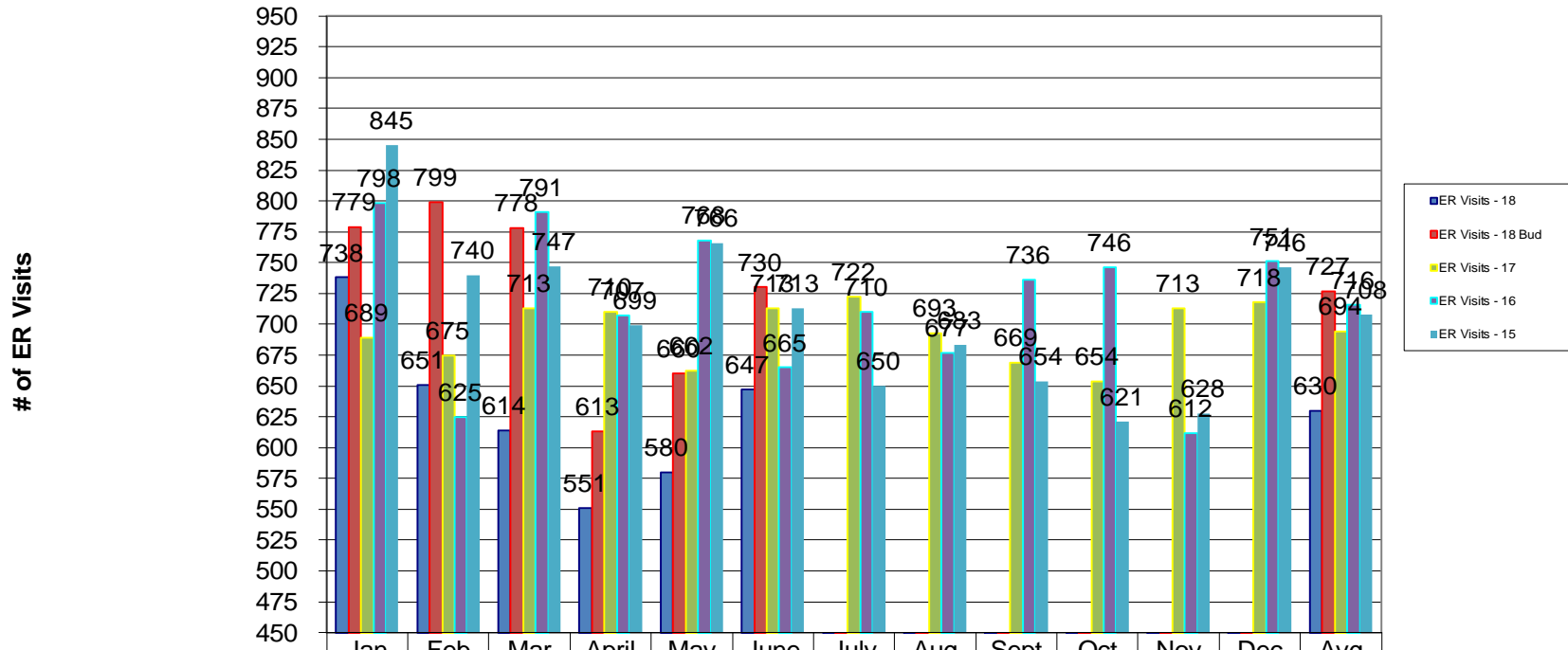
of Outpatient Surgeries



■ O/P Surgeries - 18	65	82	65	81	55	82	0	0	0	0	0	0	72
■ O/P Surgeries - 18 Bud	138	90	98	77	65	80	0	0	0	0	0	0	91
■ O/P Surgeries - 17	62	110	75	95	76	92	101	82	100	97	87	99	90
■ O/P Surgeries - 16	87	82	91	101	90	84	86	109	90	86	108	91	92
■ O/P Surgeries - 15	86	69	65	95	105	79	87	87	82	112	83	77	86

Month

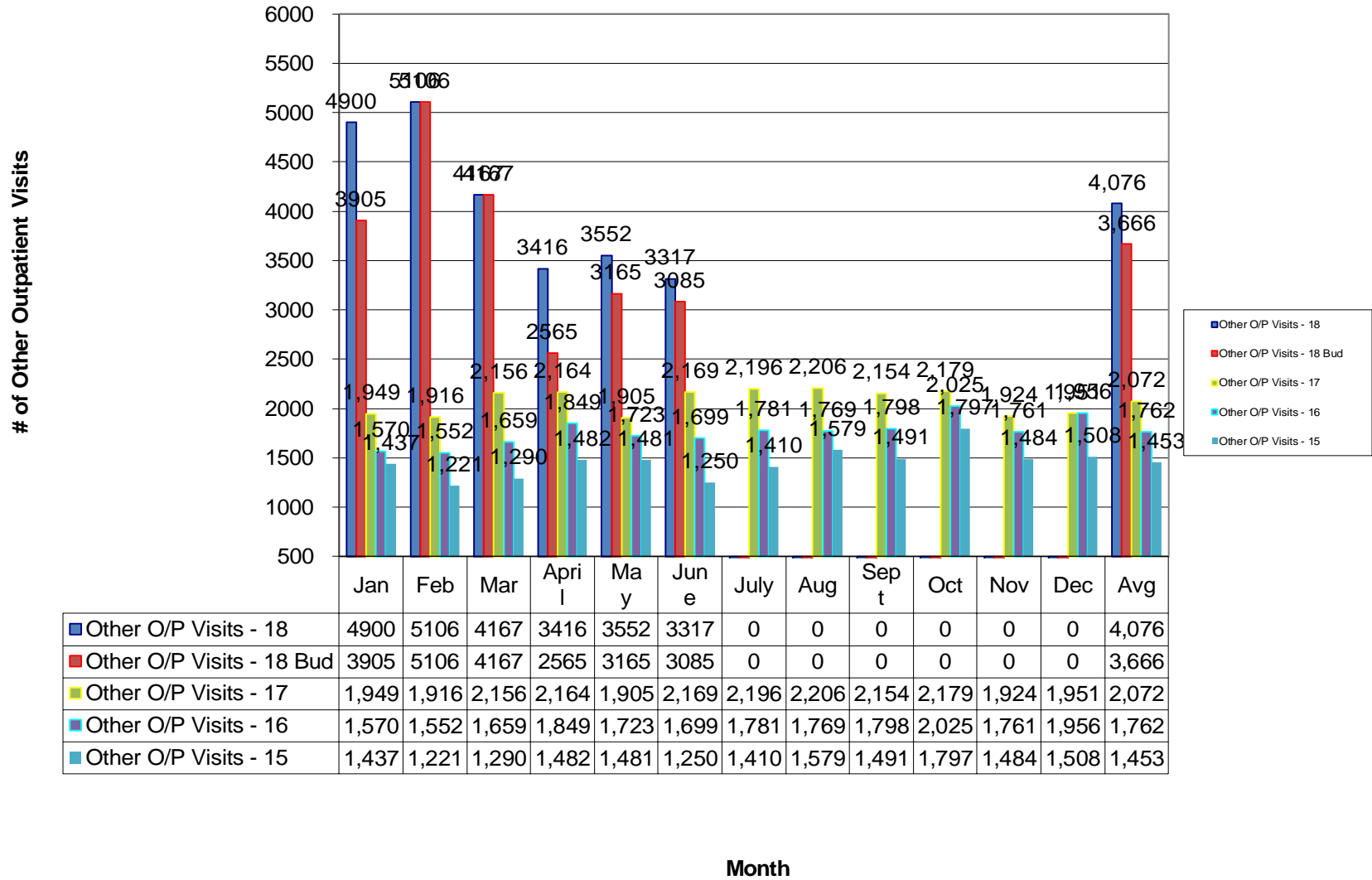
Cogdell Memorial Hospital - ER Visits



	Jan	Feb	Mar	April	May	June	July	Aug	Sept	Oct	Nov	Dec	Avg
ER Visits - 18	738	651	614	551	580	647	0	0	0	0	0	0	630
ER Visits - 18 Bud	779	799	778	613	660	730	0	0	0	0	0	0	727
ER Visits - 17	689	675	713	710	662	713	722	693	669	654	713	718	694
ER Visits - 16	798	625	791	707	768	665	710	677	736	746	612	751	716
ER Visits - 15	845	740	747	699	766	713	650	683	654	621	628	746	708

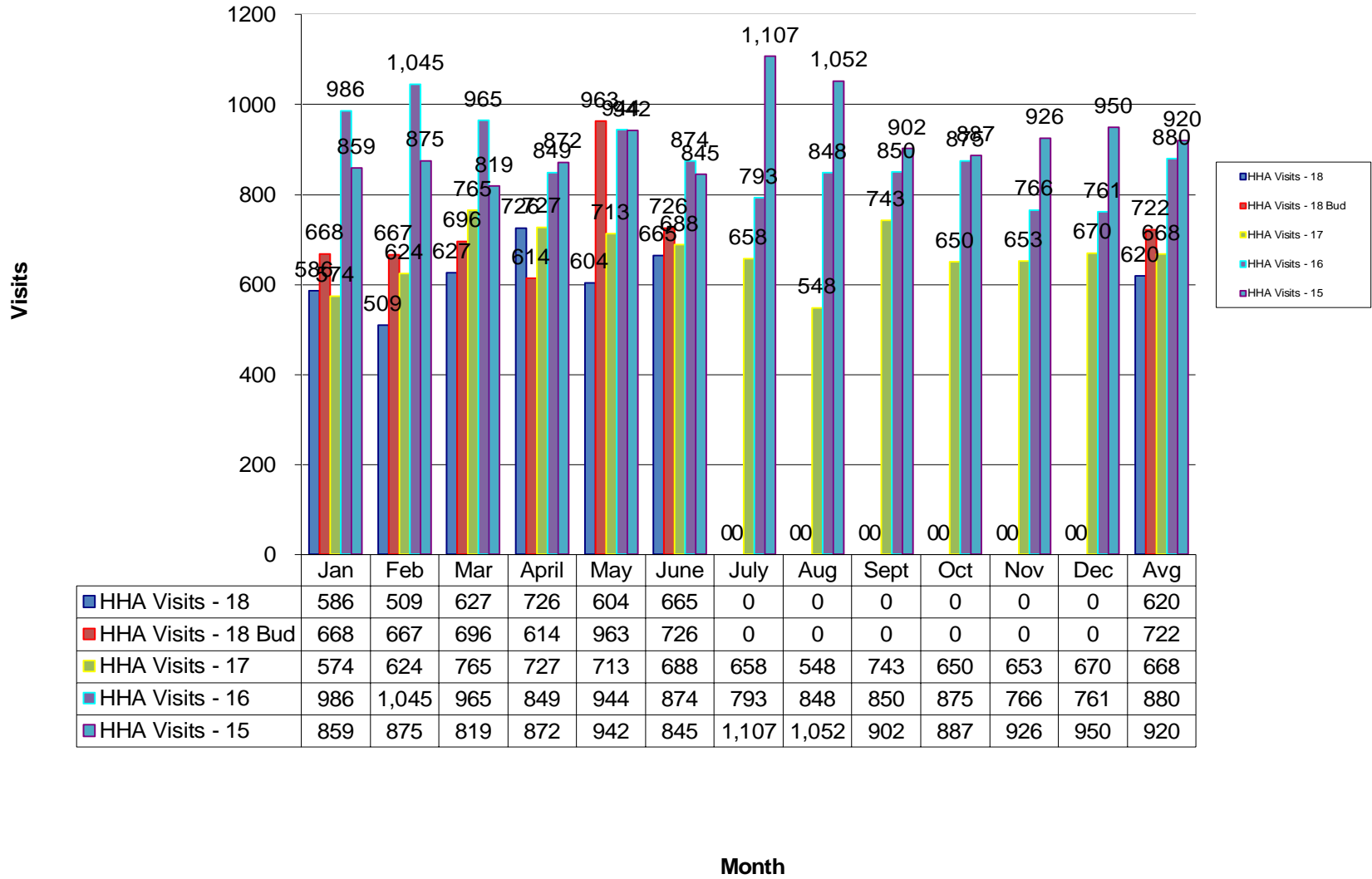
Month

Cogdell Memorial Hospital - Other Outpatient Visits

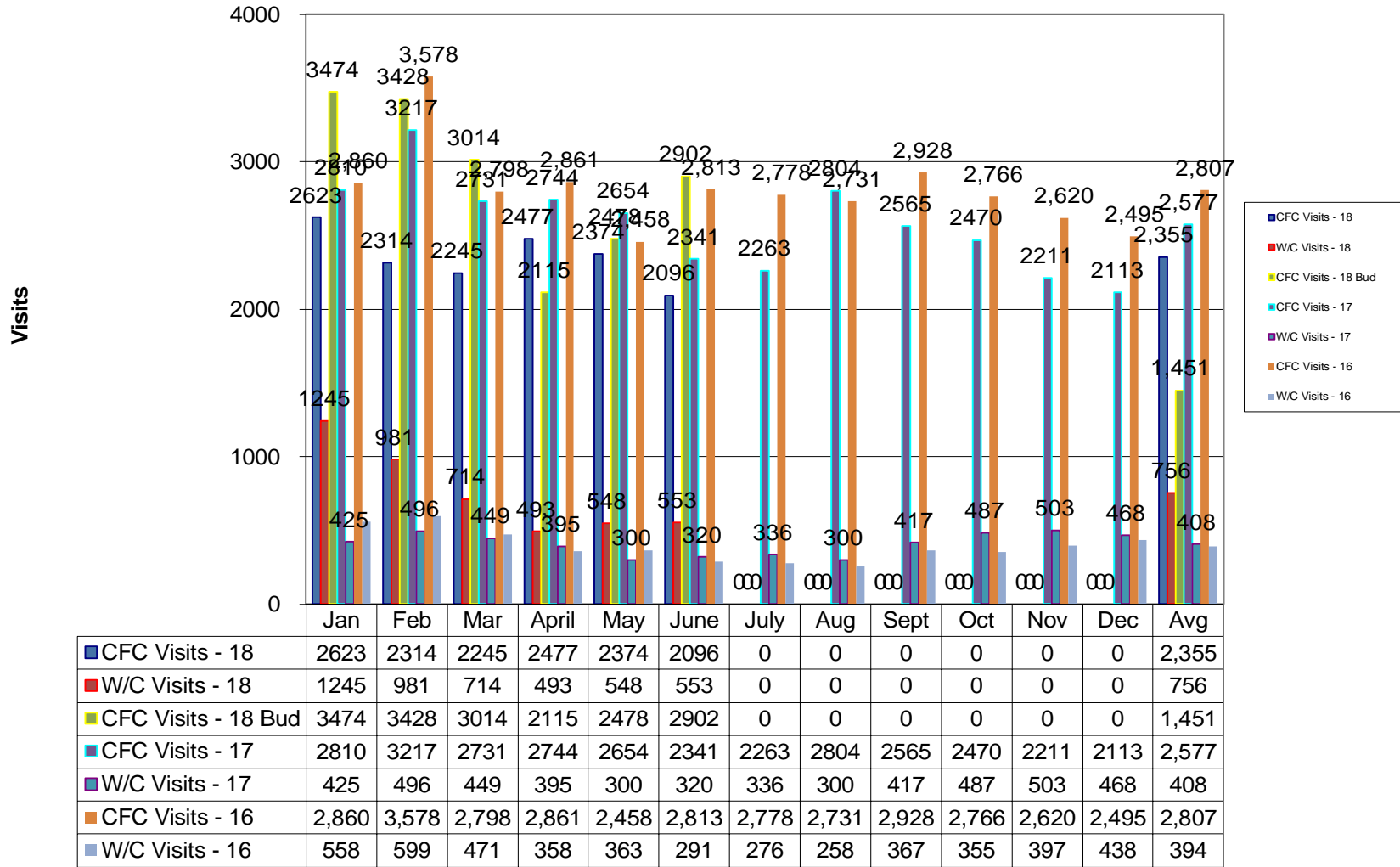


Month

Cogdell Memorial Hospital - HHA Visits

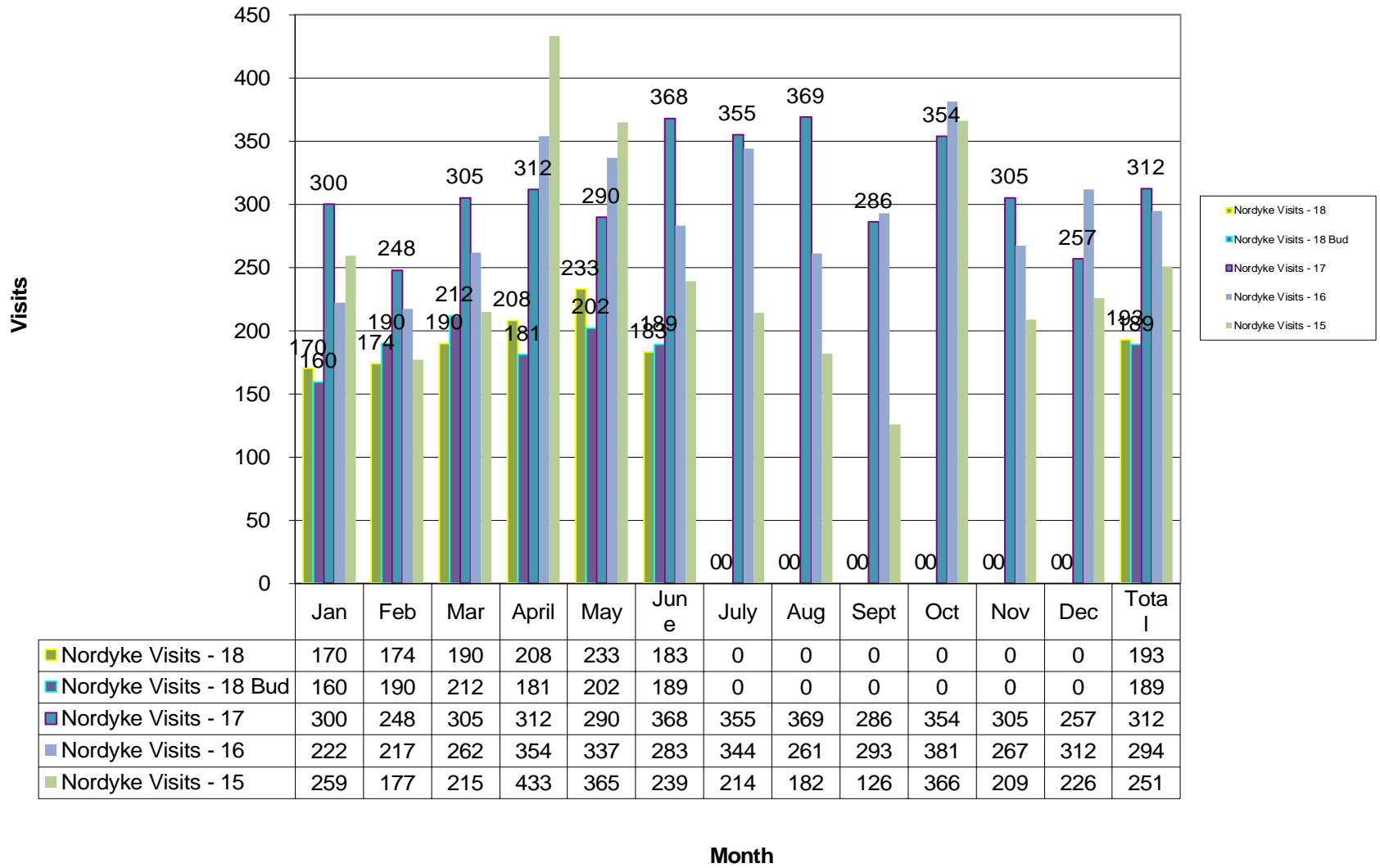


Cogdell Memorial Hospital - CFC Visits

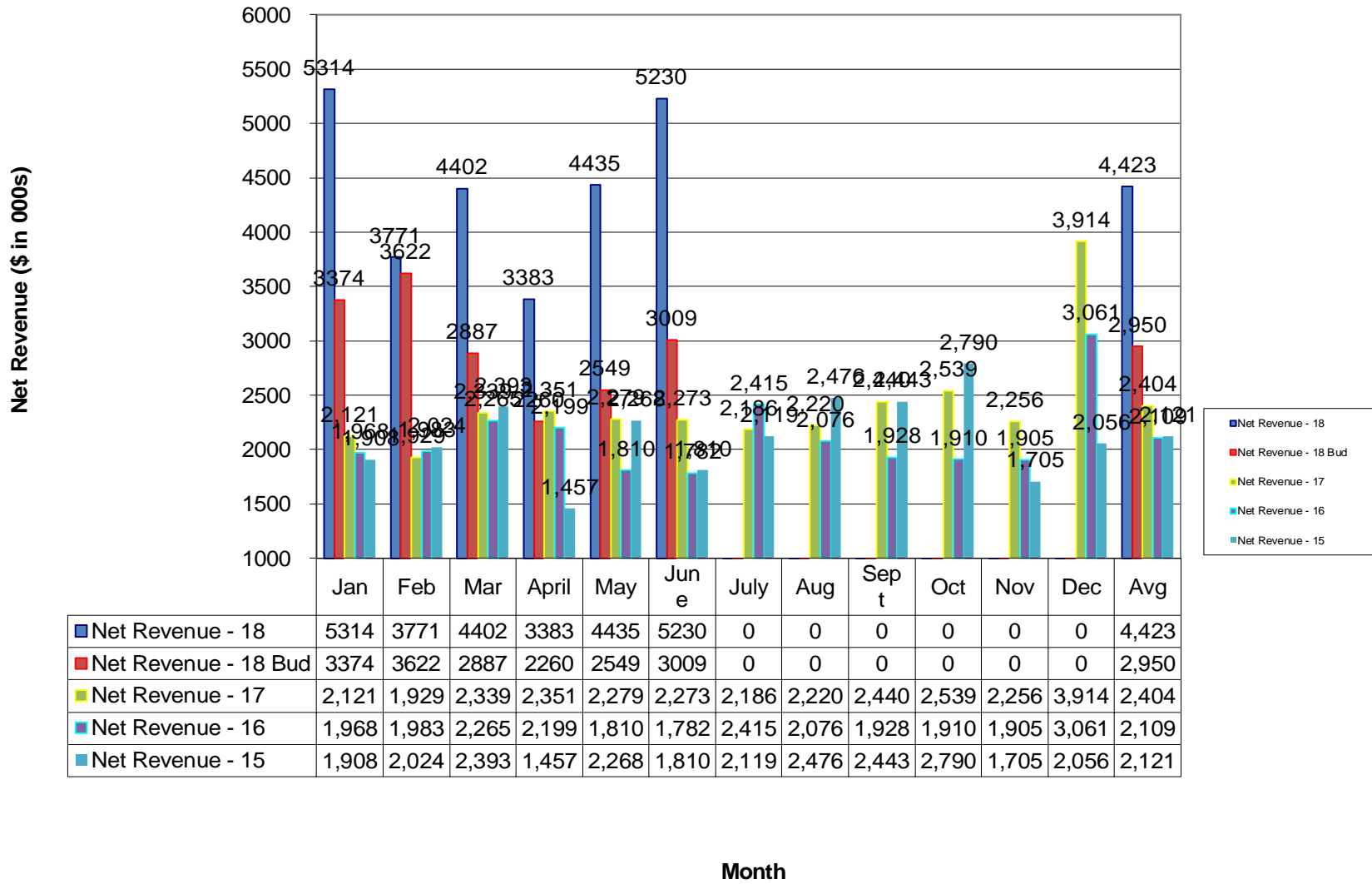


Month

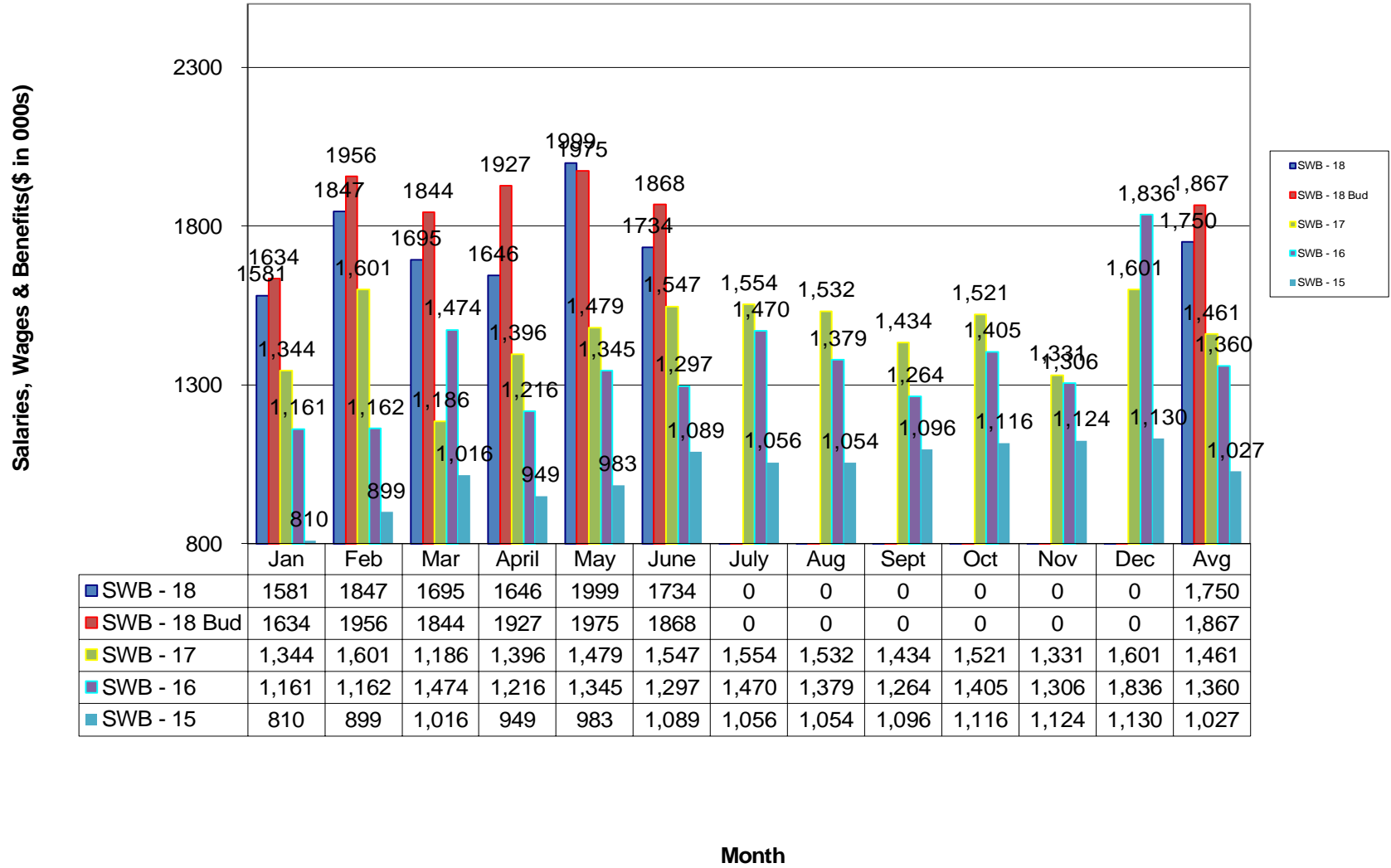
Cogdell Memorial Hospital - Ortho Visits



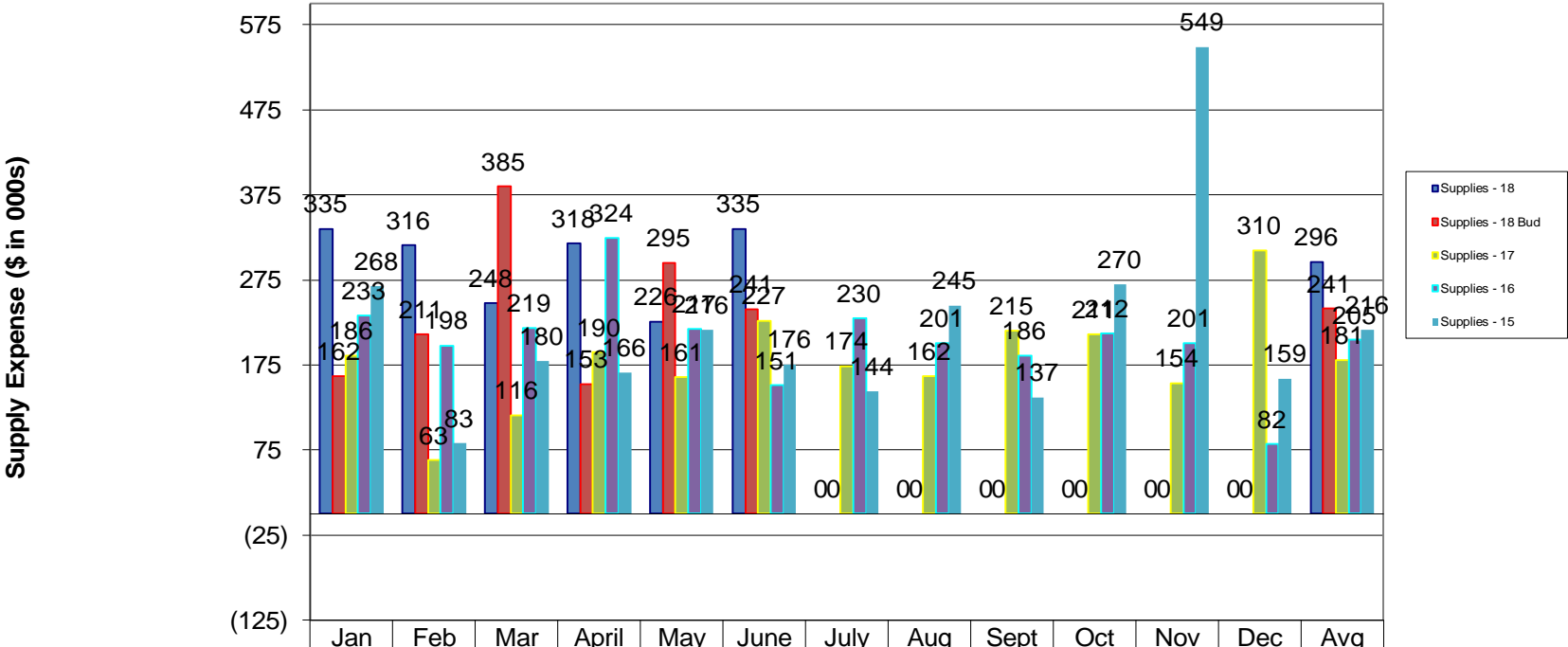
Cogdell Memorial Hospital - Net Revenue (\$ in 000s)



Cogdell Memorial Hospital - Salaries, Wages & Benefits (\$ in 000s)



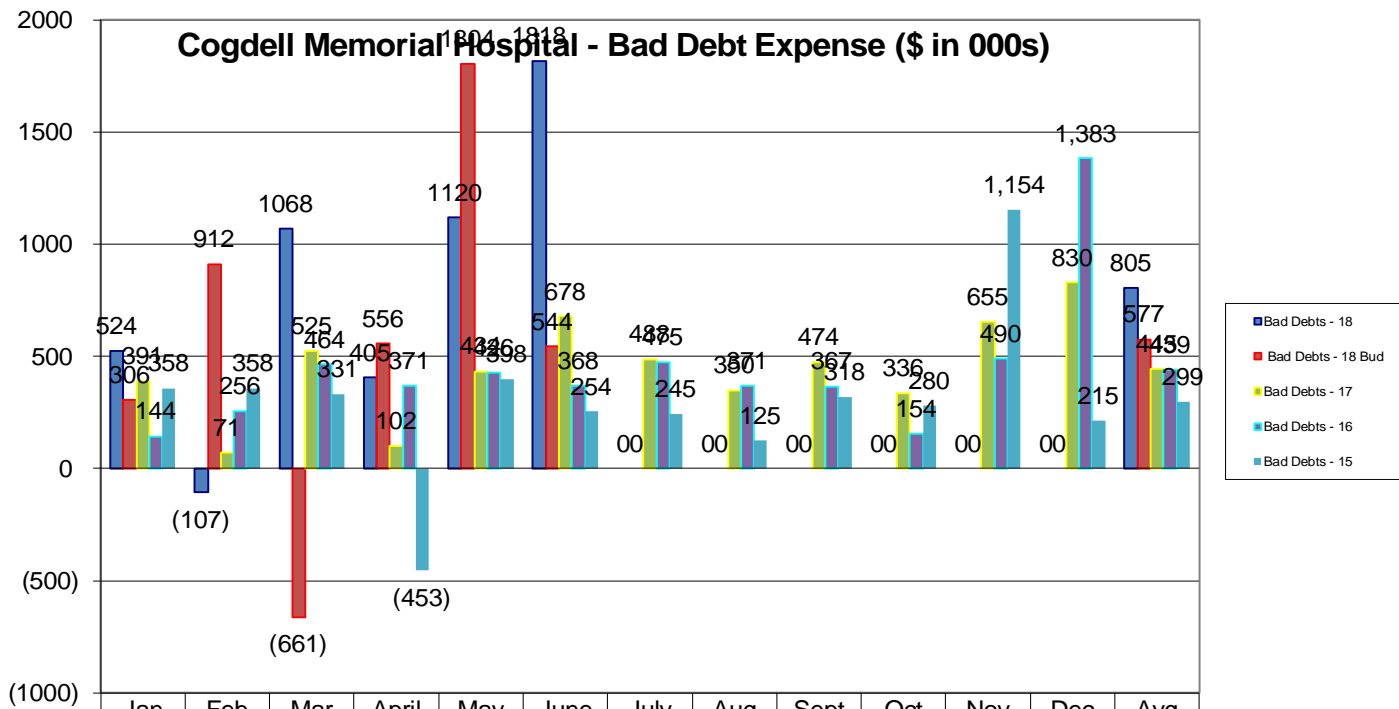
Cogdell Memorial Hospital - Supply Expense (\$ in 000s)



	Jan	Feb	Mar	April	May	June	July	Aug	Sept	Oct	Nov	Dec	Avg
Supplies - 18	335	316	248	318	226	335	0	0	0	0	0	0	296
Supplies - 18 Bud	162	211	385	153	295	241	0	0	0	0	0	0	241
Supplies - 17	186	63	116	190	161	227	174	162	215	211	154	310	181
Supplies - 16	233	198	219	324	217	151	230	201	186	212	201	82	205
Supplies - 15	268	83	180	166	216	176	144	245	137	270	549	159	216

Month

Bad Debt expense (\$ in 000s)

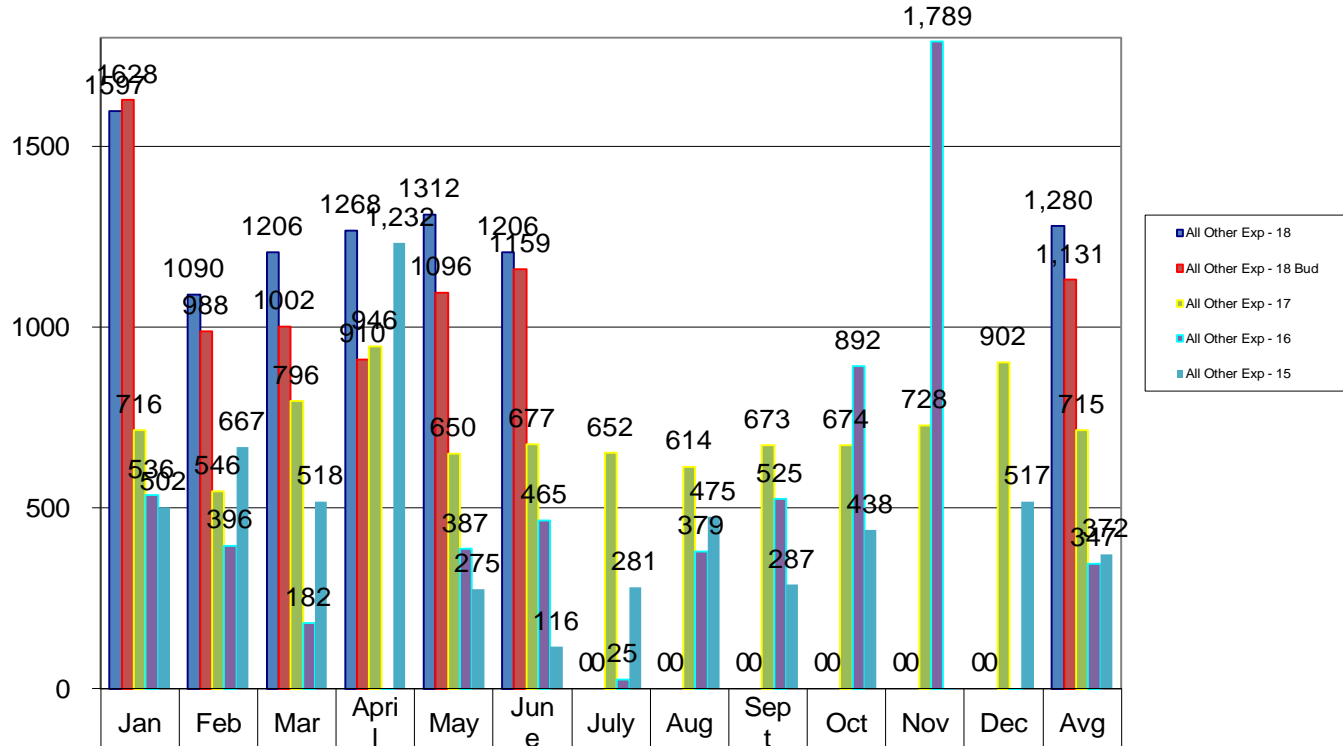


	Jan	Feb	Mar	April	May	June	July	Aug	Sept	Oct	Nov	Dec	Avg
Bad Debts - 18	524	(107)	1068	405	1120	1818	0	0	0	0	0	0	805
Bad Debts - 18 Bud	306	912	(661)	556	1804	544	0	0	0	0	0	0	577
Bad Debts - 17	391	71	525	102	434	678	488	350	474	336	655	830	445
Bad Debts - 16	144	256	464	371	426	368	475	371	367	154	490	1,383	439
Bad Debts - 15	358	358	331	(453)	398	254	245	125	318	280	1,154	215	299

Month

Cogdell Memorial Hospital - All Other Operating Expense (\$ in 000s)

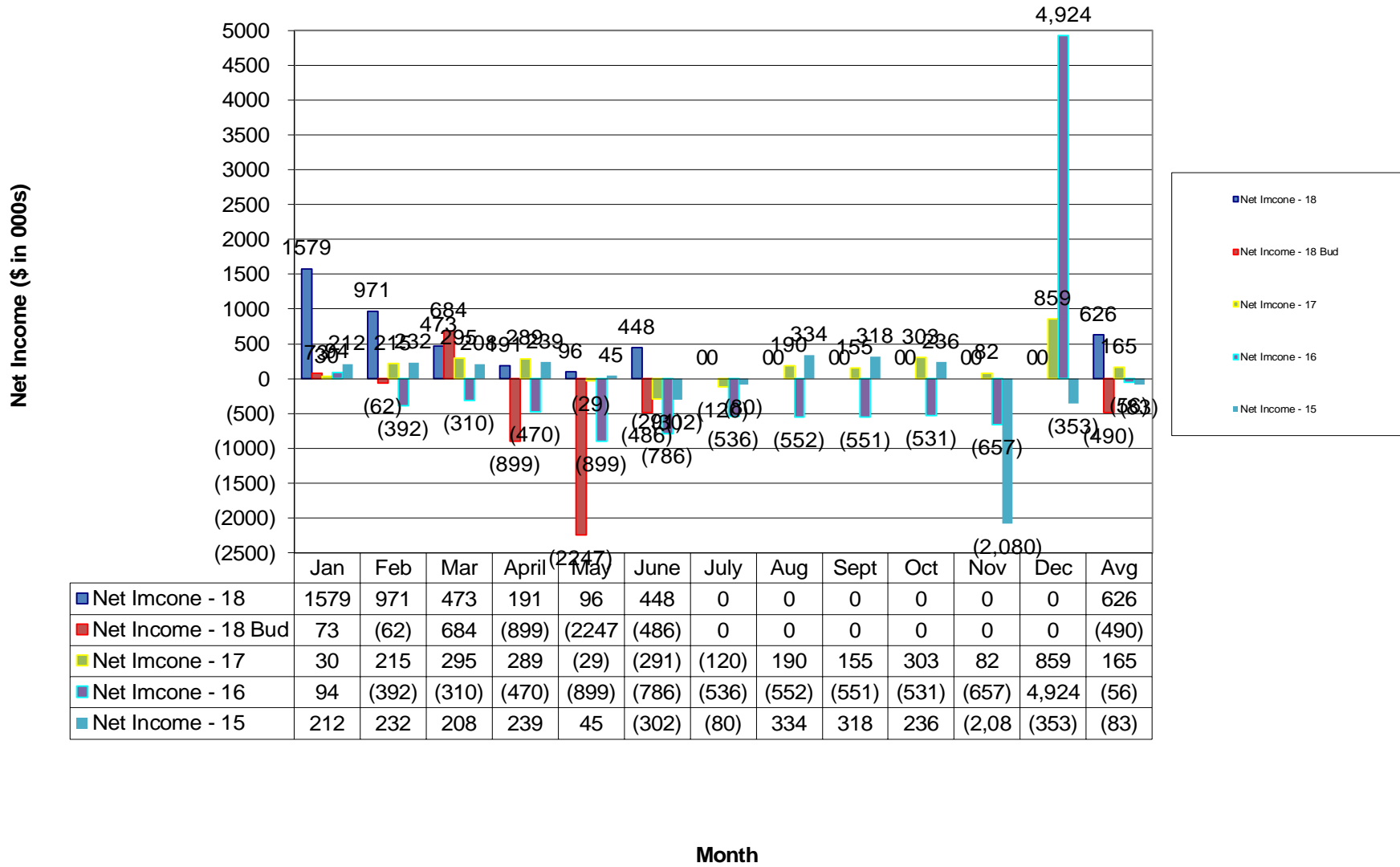
All Other Operating Expense (\$ in 000s)



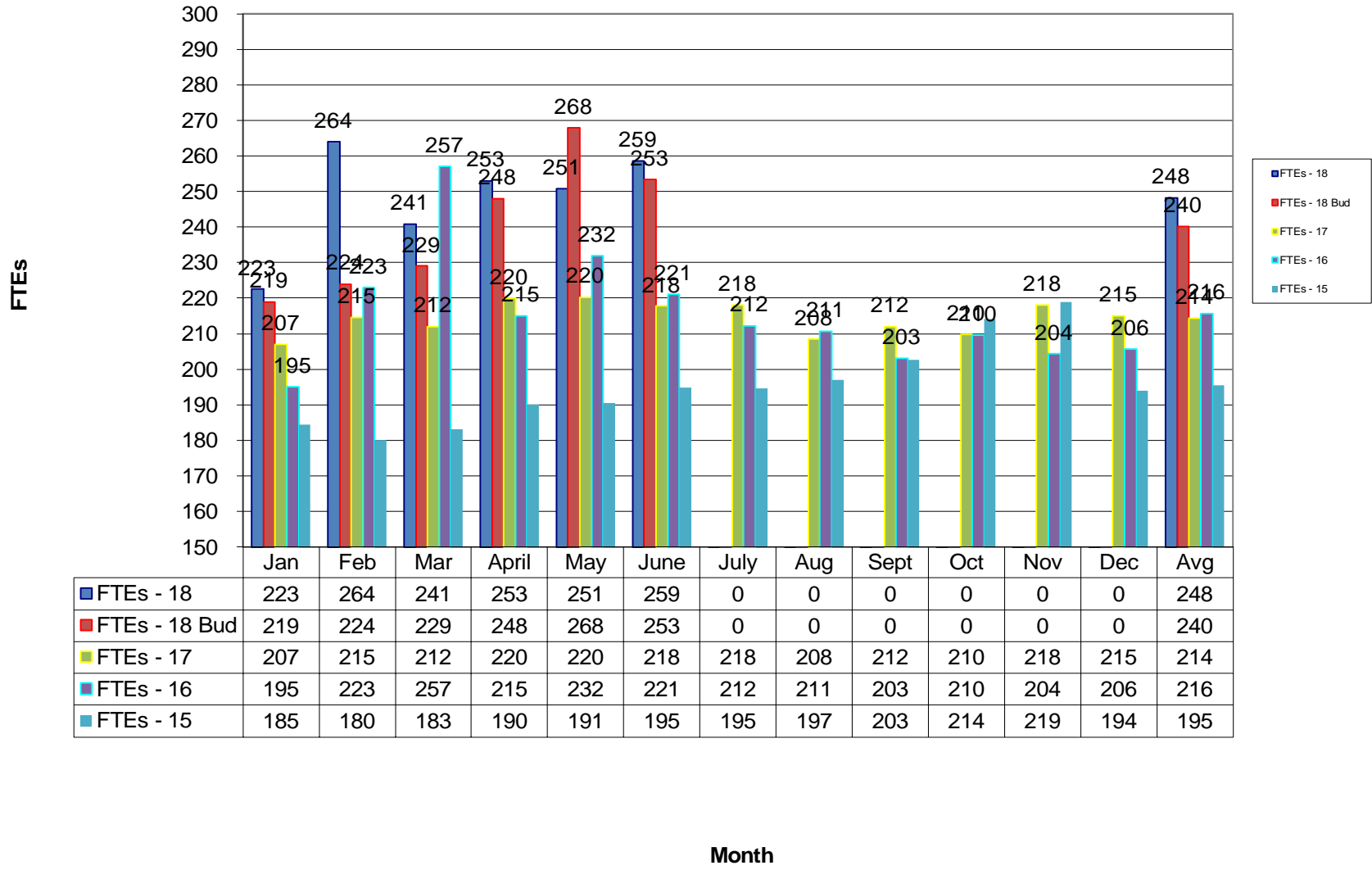
	Jan	Feb	Mar	April	May	June	July	Aug	Sept	Oct	Nov	Dec	Avg
All Other Exp - 18	1597	1090	1206	1268	1312	1206	0	0	0	0	0	0	1,280
All Other Exp - 18 Bud	1628	988	1002	910	1096	1159	0	0	0	0	0	0	1,131
All Other Exp - 17	716	546	796	946	650	677	652	614	673	674	728	902	715
All Other Exp - 16	536	396	182	-525	387	465	25	379	525	892	1,789	-892	347
All Other Exp - 15	502	667	518	1,232	275	116	281	475	287	438	-842	517	372

Month

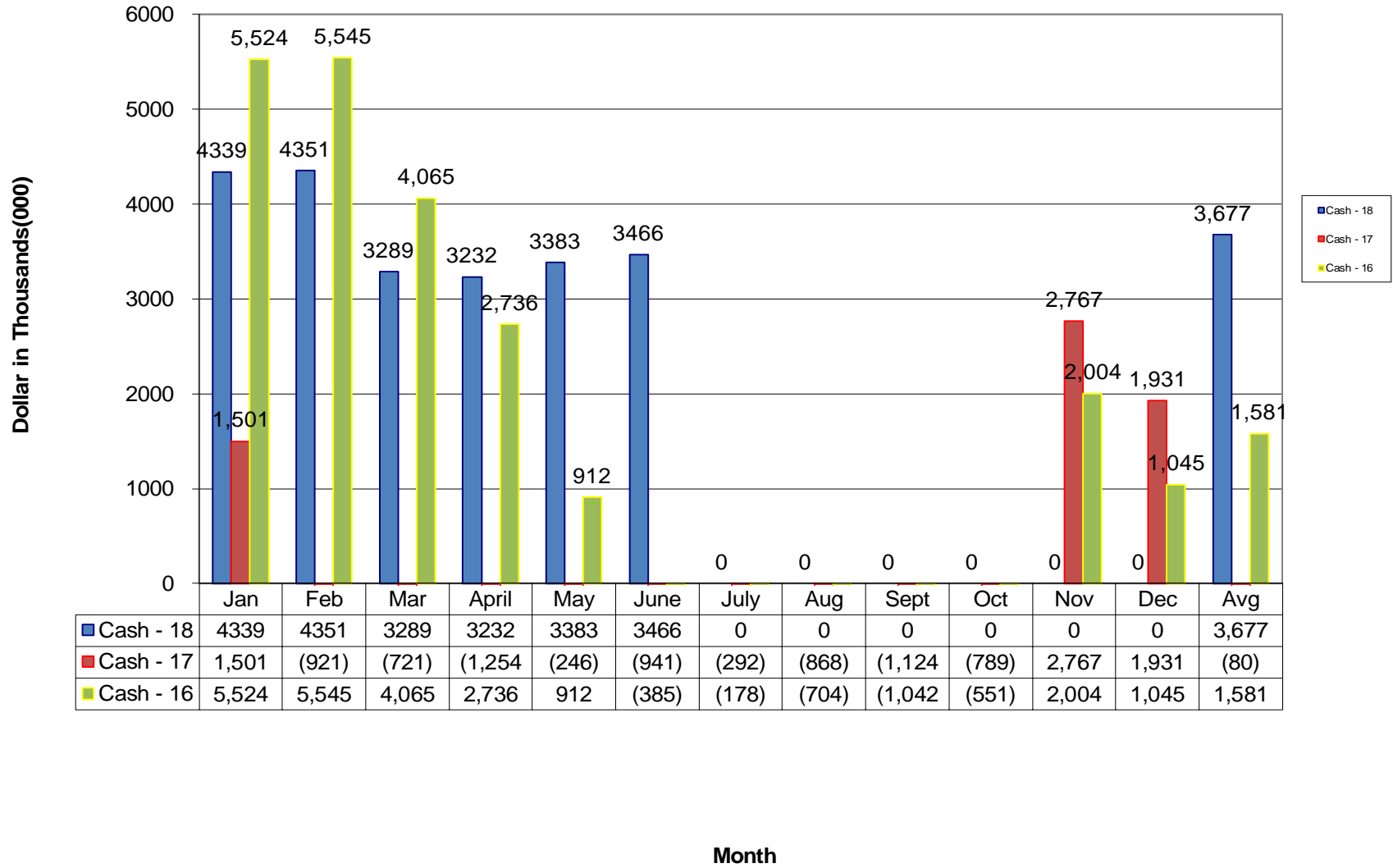
Cogdell Memorial Hospital - Net Income (\$ in 000s)



Cogdell Memorial Hospital - FTEs

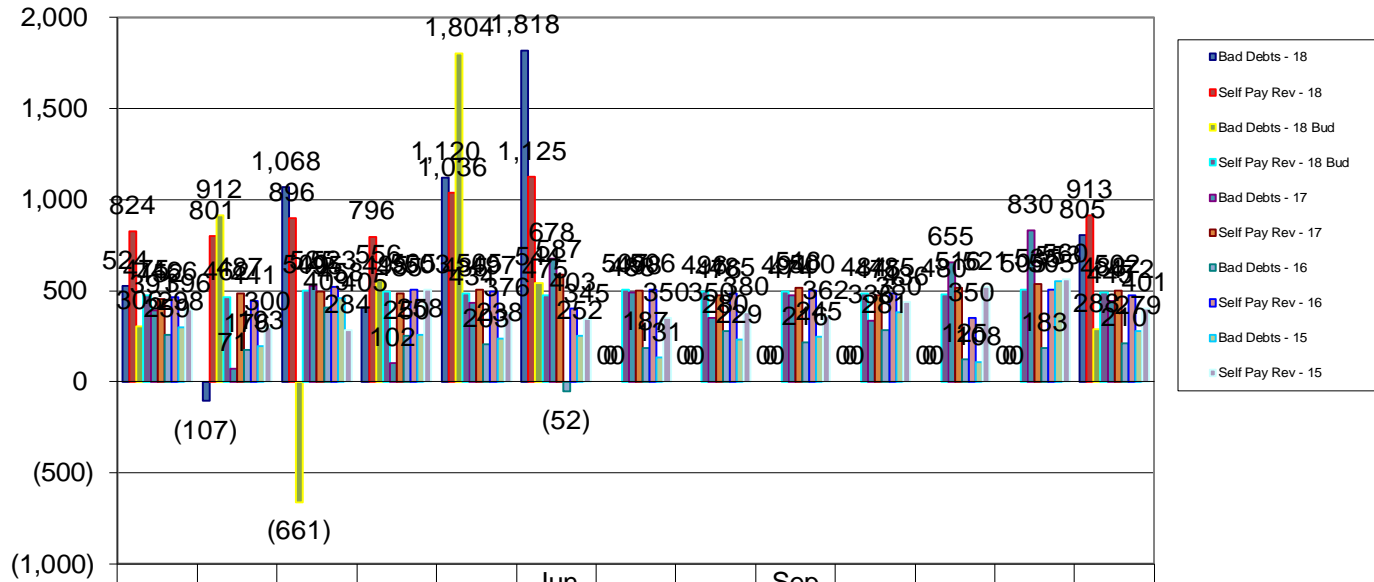


Cogdell Memorial Hospital - Cash



Cogdell Memorial Hospital - Self Pay Rev & Bad Debts

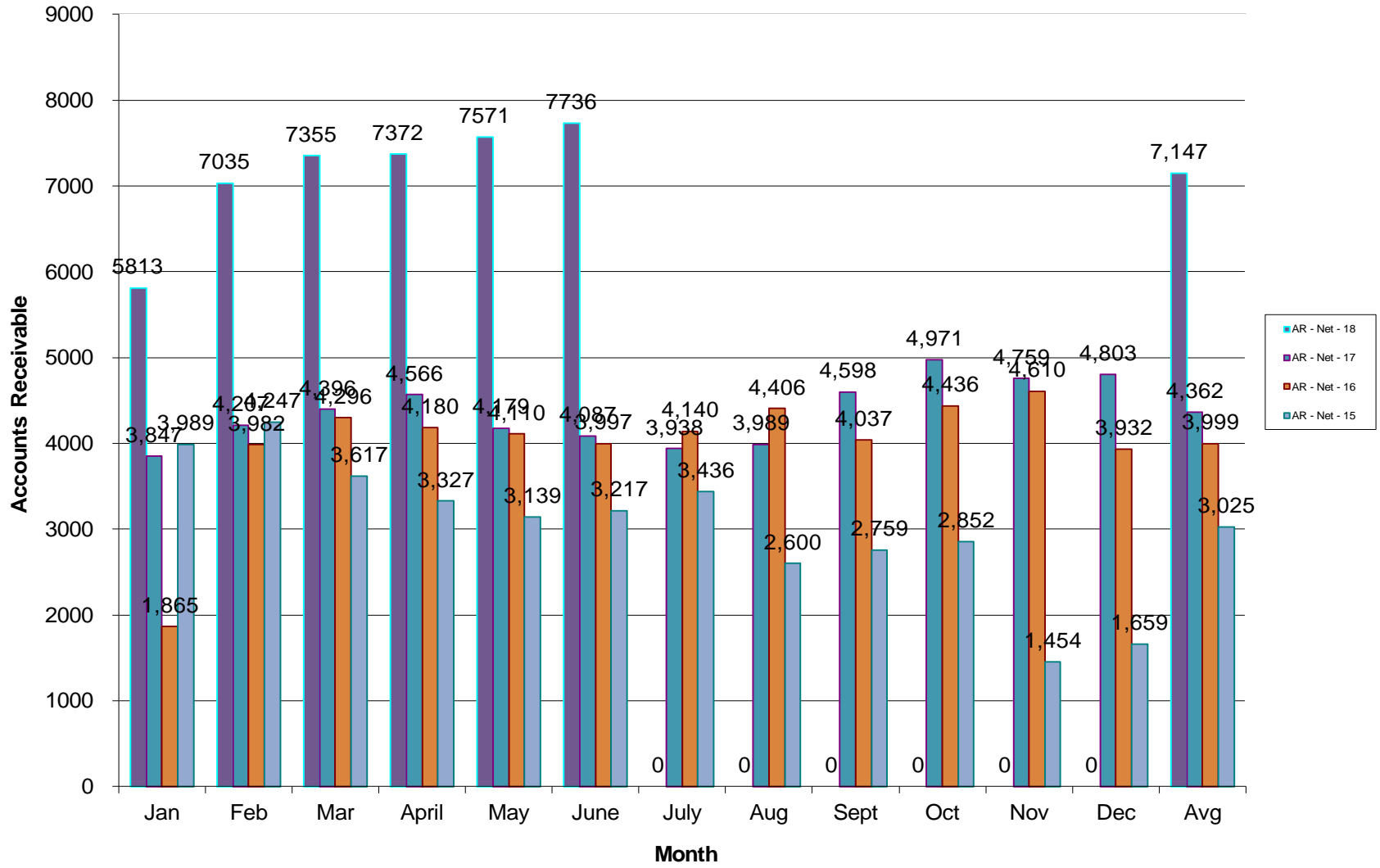
Dollars in Thousands(000)



	Jan	Feb	Mar	April	May	Jun e	July	Aug	Sep t	Oct	Nov	Dec	Avg
Bad Debts - 18	524	(107)	1,068	405	1,120	1,818	0	0	0	0	0	0	805
Self Pay Rev - 18	824	801	896	796	1,036	1,125	0	0	0	0	0	0	913
Bad Debts - 18 Bud	306	912	(661)	556	1,804	544	0	0	0	0	0	0	288
Self Pay Rev - 18 Bud	475	462	500	495	485	475	507	496	494	484	480	505	488
Bad Debts - 17	391	71	525	102	434	678	488	350	474	336	655	830	445
Self Pay Rev - 17	452	487	495	485	505	587	498	476	518	475	516	535	502
Bad Debts - 16	259	176	409	250	203	(52)	187	280	216	281	125	183	210
Self Pay Rev - 16	466	441	523	505	497	403	506	485	500	485	350	505	472
Bad Debts - 15	298	193	458	258	238	252	131	229	245	380	108	553	279
Self Pay Rev - 15	396	300	284	503	376	345	350	380	362	436	521	560	401

Month

Cogdell Memorial Hospital - Accounts Receivable



Cogdell Memorial Hospital Cash Collections

